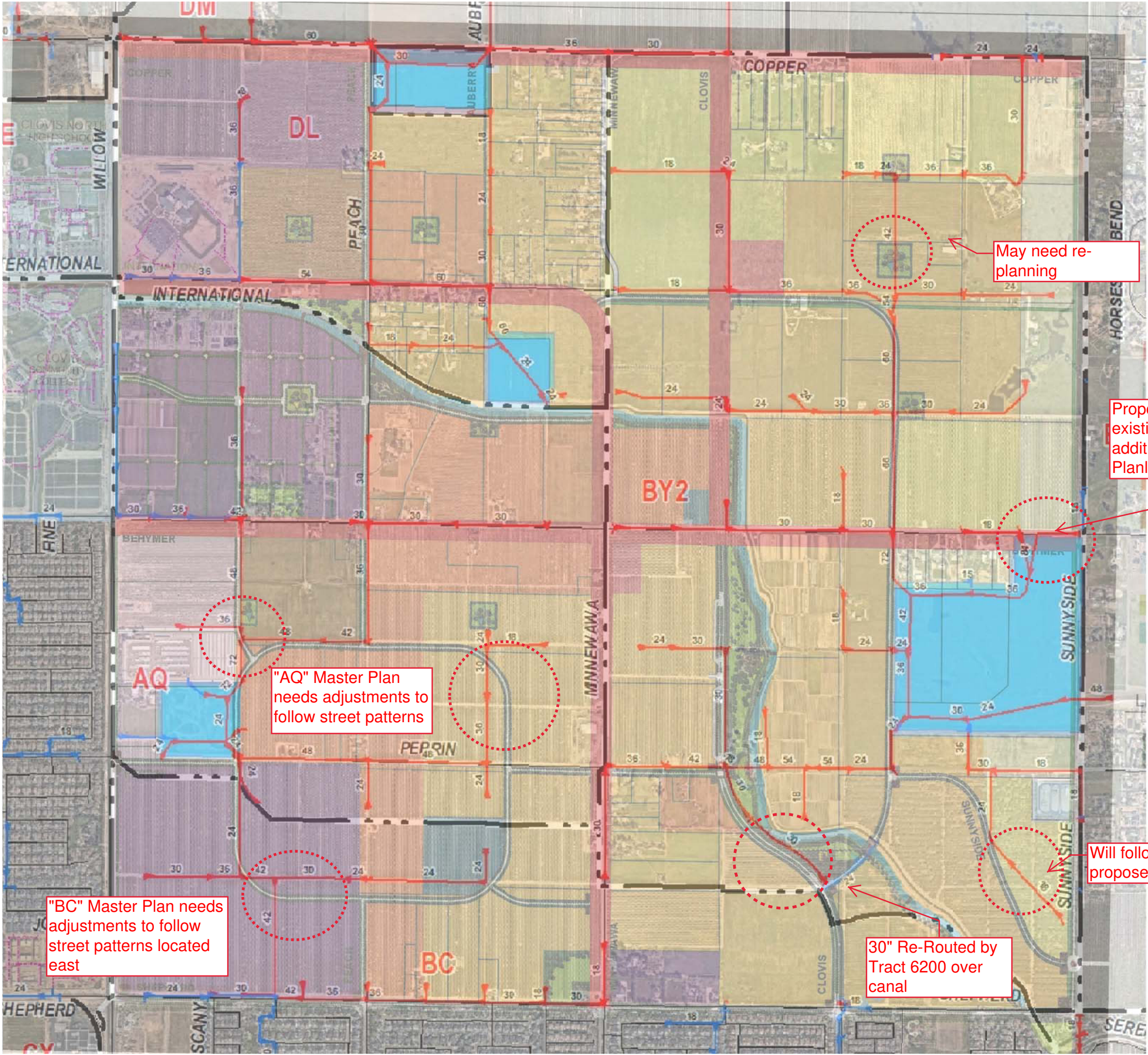


- Preferred alignment for storm drain placement shall be either north or east of street center lines.
- All streets with curb medians and 11' or 12' width lanes will typically be placed 6' off curb face.
- For street sections with 11' turning lanes, prefer to be 10' from the centerline.
- Contain FMFCD pipe within the center of travel lanes whenever possible to minimize the need for multiple lane closures should our facilities need to be maintained.



May need re-planning

Proposed R/W will follow existing fence, no additional R/W needed per Planline

"AQ" Master Plan needs adjustments to follow street patterns

"BC" Master Plan needs adjustments to follow street patterns located east

30" Re-Routed by Tract 6200 over canal

Will follow proposed Tract