

PULL BOXES TO BE AT DISTANCES NO GREATER THAN 500' APART. BOXES PREFERRED TO BE AT STREET CORNERS.

HDPE ITS CONDUITS TO BE INSTALLED PER PLANS OR AS DIRECTED BY THE ENGINEER.

NOTE:

ALL UNDERGROUND CONDUIT SHALL HAVE A TRACER WIRE AFFIXED TO THE OUTSIDE OF THE CONDUIT. THE TRACER WIRE SHALL BE NO. 10 STRANDED COPPER, WHITE INSULATION.

LEGEND

☐ ITS VAULT TO BE N48T OR PER PLANS.

Ⓢ IP DEVICE PER CURRENT CITY OF CLOVIS STANDARD.



CITY OF CLOVIS

DWG NO.

ITS-1

TYPICAL ITS CORRIDOR LAYOUT

REF. STD. SPECIFICATIONS:
SECTION 82 & 86

APPROVED BY:

[Signature]

CITY ENGINEER

DATE: 1/6/2020

NO.

REVISED

BY

APPROVALS

SCALE: NTS

08-03-11

BGJ

CM

[Signature]

OTHER

DRAWN BY: JA

09-22-11

BGJ

DRU

[Signature]

OTHER

SHEET 1 OF 1

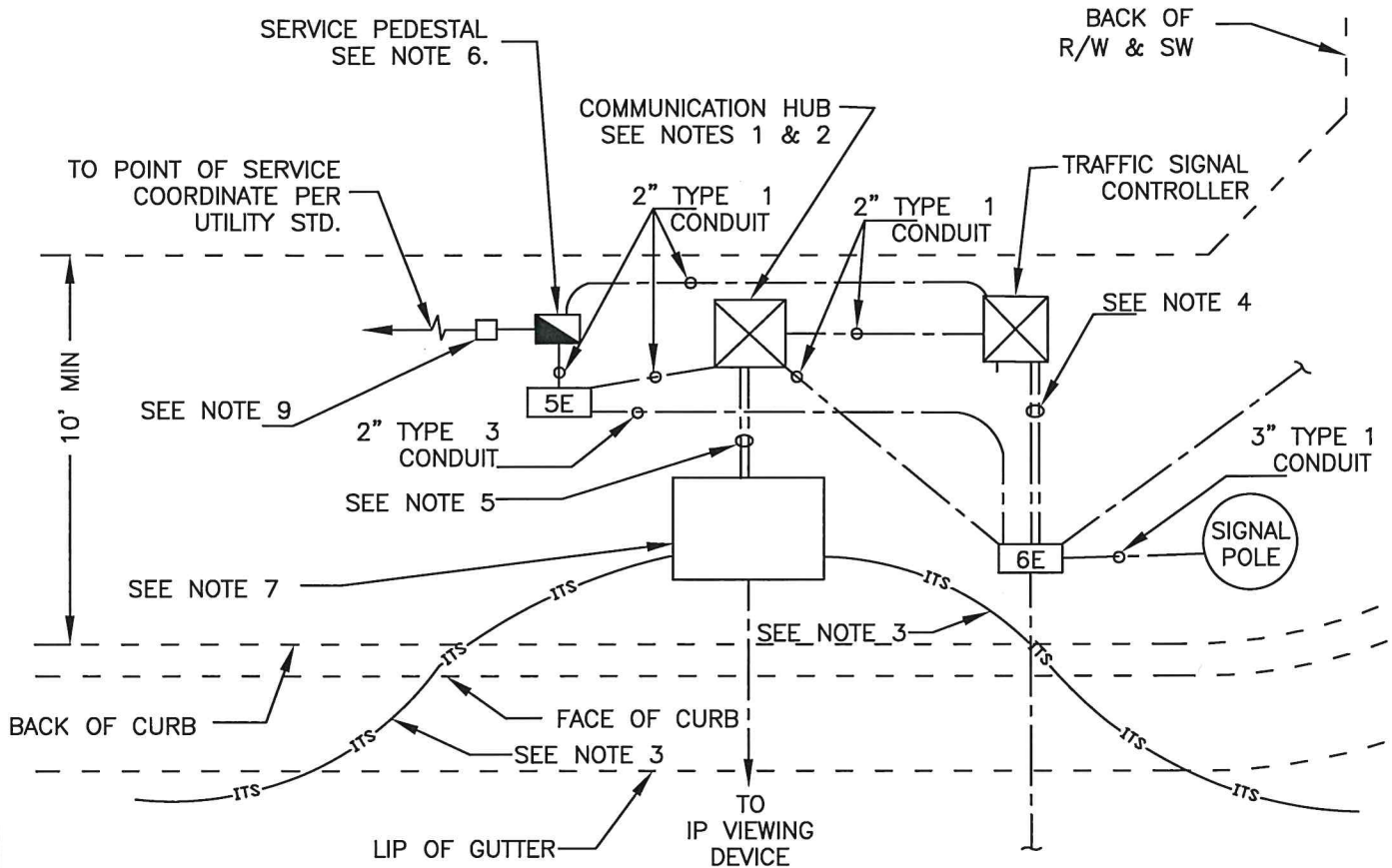
07-25-19

CGV

PUD

[Signature]

OTHER



NOTES:

1. ITS COMMUNICATION HUB SHALL BE INSTALLED IN A LOCATION APPROVED BY CITY ENGINEER. COMMUNICATION HUB CABINET SHOULD BE AS NEAR TO N48T ITS VAULT AS POSSIBLE.
2. ITS INTERSECTION COMMUNICATIONS CABINET PER CURRENT CITY OF CLOVIS STANDARDS.
3. ITS CONDUITS TO BE INSTALLED PER PLANS AND AS DIRECTED BY THE ENGINEER.
4. TWO 4" DIAMETER TYPE 1 CONDUIT.
5. TWO 3" ITS HDPE CONDUITS INSTALLED PER STD. DWG. ITS-4, TYP.
6. INSTALL SERVICE PEDESTAL (TESCO 26-100 OR APPROVED EQUAL) AT LOCATIONS REQUIRING A HUB CABINET. SEE STD. DWG TS-5.
7. N48T ITS VAULT, SEE STD. DWG. ITS-4.
8. FOR TRAFFIC SIGNAL EQUIPMENT LAYOUT, SEE TRAFFIC SIGNAL (TS) STD. DRAWINGS.
9. CALTRANS #3 1/2E PULLBOX (OR AS SHOWN ON PLANS).



CITY OF CLOVIS

TYPICAL ITS INTERSECTION LAYOUT WITH HUB

DWG NO.

ITS-2

REF. STD. SPECIFICATIONS:
SECTION 82 & 86

APPROVED BY:

[Signature]
CITY ENGINEER

DATE: 1/6/2020

NO.

REVISED

BY

APPROVALS

4

08-04-11

BGJ

CM

DRU

PUD

OTHER

OTHER

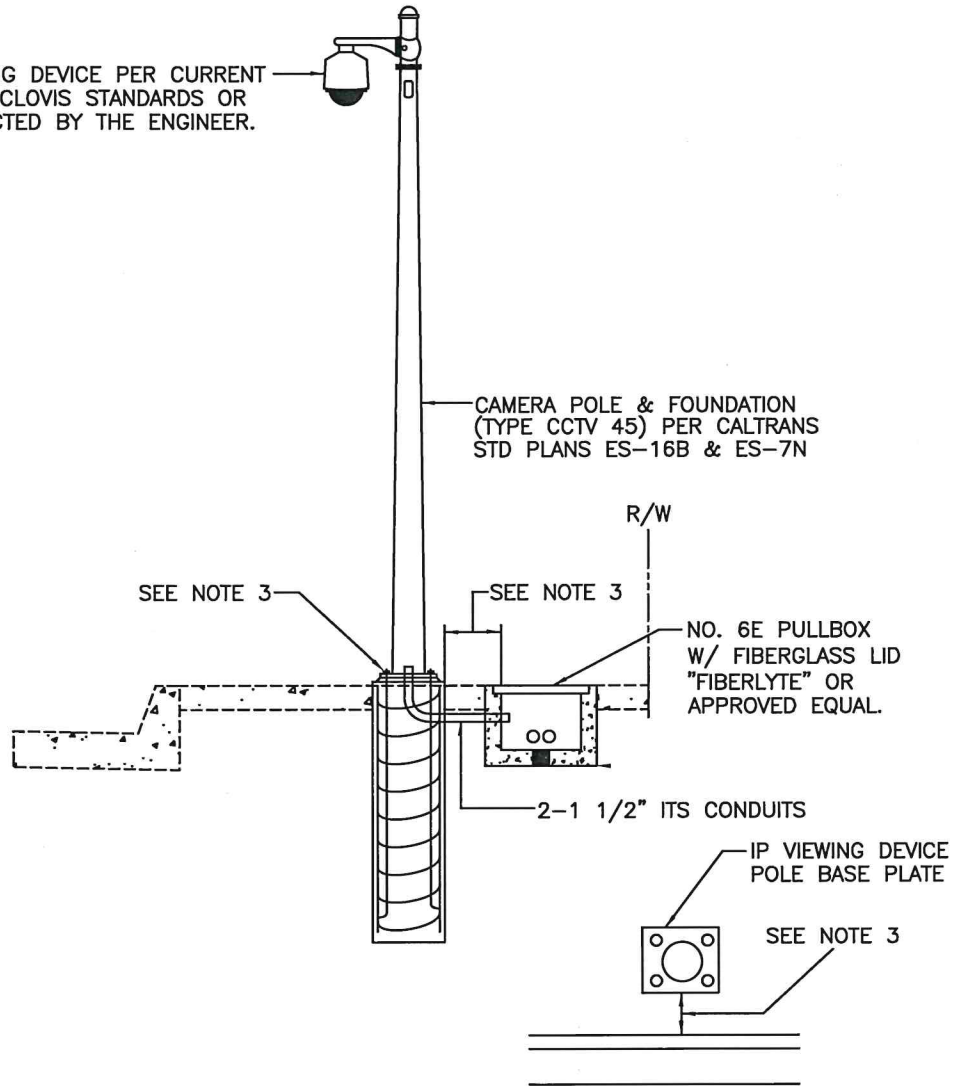
OTHER

SCALE: NTS

DRAWN BY: JA

SHEET 1 OF 1

IP VIEWING DEVICE PER CURRENT
CITY OF CLOVIS STANDARDS OR
AS DIRECTED BY THE ENGINEER.



NOTES:

1. THE CONTRACTOR SHALL VERIFY EXISTING UTILITY LOCATIONS, IDENTIFYING POTENTIAL CONFLICTS BEFORE ORDERING OR FABRICATING ANY MATERIAL.
2. DURING POLE ERECTION, THE POST SHALL BE RAKED AS NECESSARY WITH THE USE OF LEVELING NUTS TO PROVIDE A PLUMB POLE AXIS.
3. ALIGN SIDE OF POLE BASE PLATE PARALLEL WITH CURB FACE. LOCATE POLE AS DIRECTED BY CITY ENGINEER. IF CURB & GUTTER DOESN'T EXIST, ALIGN BASE PLATE PER CITY ENGINEER. MAINTAIN MINIMUM ADA CLEARANCES AROUND POLE.

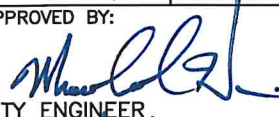





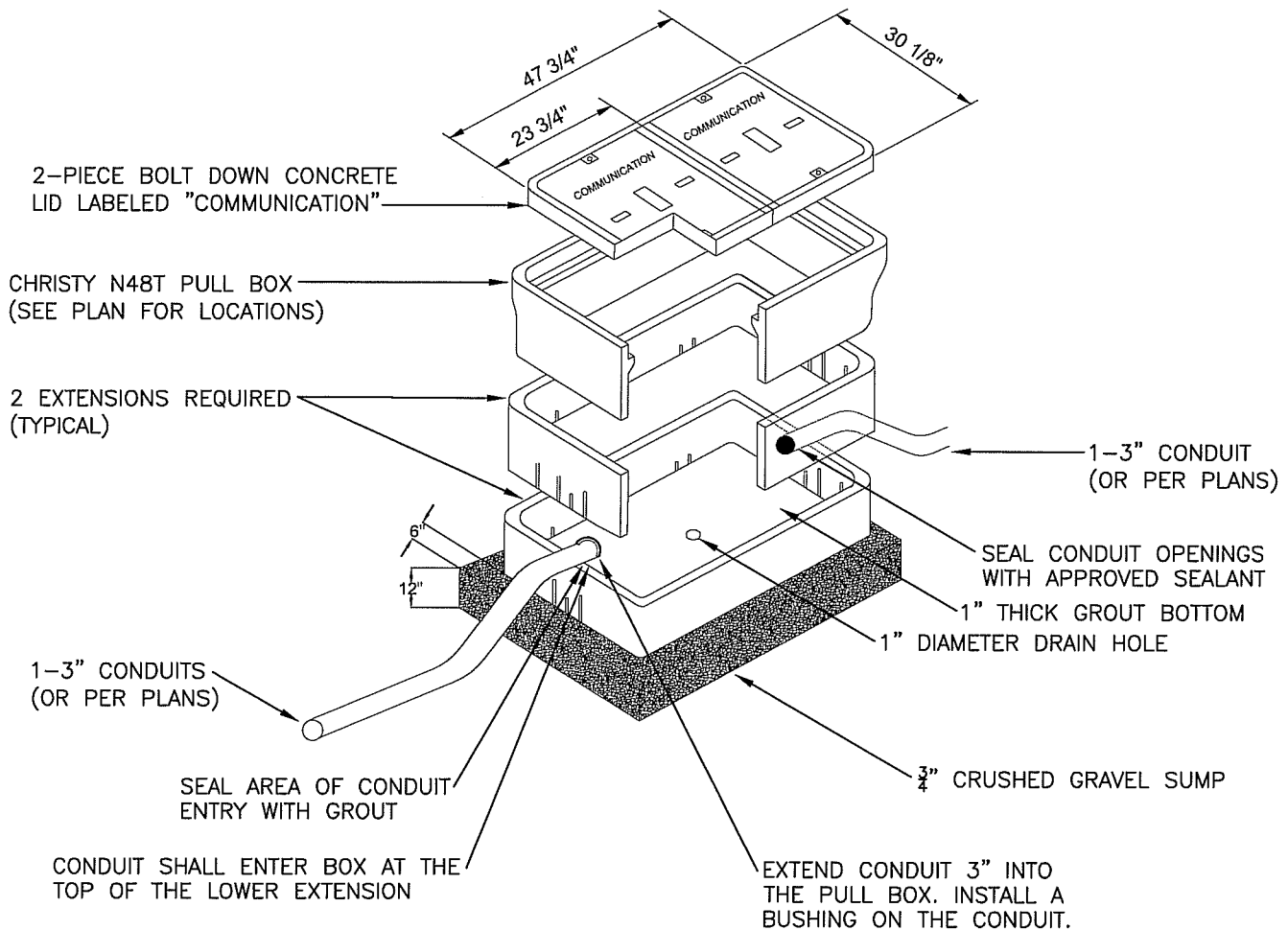
CITY OF CLOVIS

DWG NO.
ITS-3

IP VIEWING DEVICE

REF. STD. SPECIFICATIONS:
SECTION 82 & 86

APPROVED BY:  CITY ENGINEER DATE: 1/6/2020	NO.	REVISED	BY	APPROVALS			SCALE: NTS
		08-04-11	BGJ	CM		OTHER	DRAWN BY: JA
		09-22-11	BGJ	DRU		OTHER	
		07-25-19	CGV	PUD		OTHER	SHEET 1 OF 1



NOTE: A LAYER OF ROOFING PAPER SHALL BE WRAPPED AROUND THE PULL BOX AND EXTENSIONS PRIOR TO BACKFILLING DIRT.

PLACE A 1' WIDE 6" THICK CONCRETE COLLAR AROUND PULL BOX.

NOTE:

THIS PULL BOX SHALL BE USED FOR ALL FIBER OPTIC CABLES RUN IN CONJUNCTION WITH FIBER OPTIC COMMUNICATIONS SYSTEMS. REFERENCE IS MADE TO STANDARD SPECIFICATIONS SECTION 82, "FIBER OPTIC FACILITIES" FOR INSTALLATION REQUIREMENTS.



CITY OF CLOVIS

N48T FIBER PULL BOX

DWG NO.

ITS-4

REF. STD. SPECIFICATIONS:
SECTION 82 & 86

APPROVED BY:

CITY ENGINEER

DATE:

NO.

REVISED

BY

APPROVALS

SCALE: NTS

08-08-11

BGJ

CM

OTHER

DRAWN BY: JA

09-22-11

BGJ

DRU

OTHER

SHEET 1 OF 1

PUD

OTHER