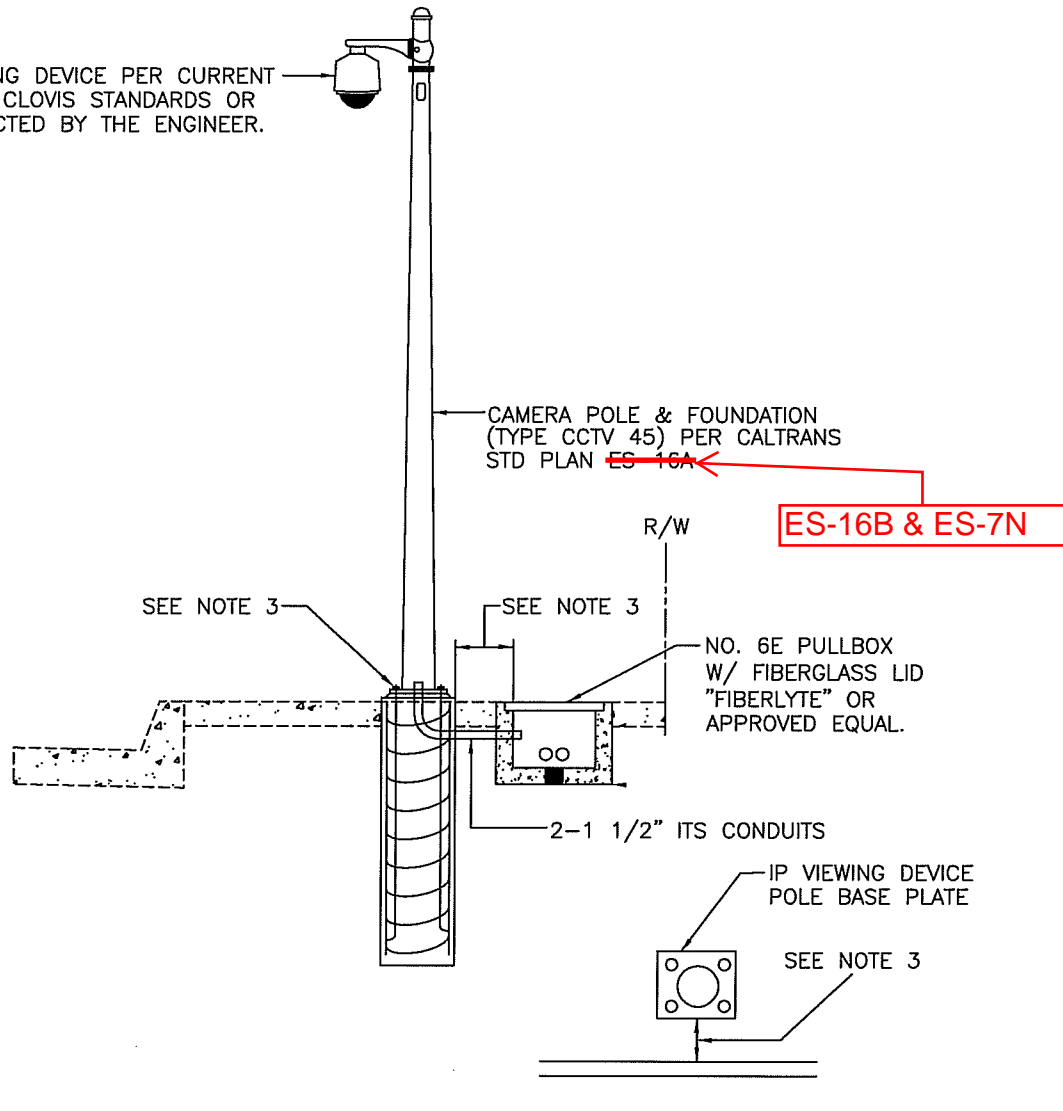


IP VIEWING DEVICE PER CURRENT  
CITY OF CLOVIS STANDARDS OR  
AS DIRECTED BY THE ENGINEER.



#### NOTES:

1. THE CONTRACTOR SHALL VERIFY EXISTING UTILITY LOCATIONS, IDENTIFYING POTENTIAL CONFLICTS BEFORE ORDERING OR FABRICATING ANY MATERIAL.
2. DURING POLE ERECTION, THE POST SHALL BE RAKED AS NECESSARY WITH THE USE OF LEVELING NUTS TO PROVIDE A PLUMB POLE AXIS.
3. ALIGN SIDE OF POLE BASE PLATE PARALLEL WITH CURB FACE. LOCATE POLE AS DIRECTED BY CITY ENGINEER. IF CURB & GUTTER DOESN'T EXIST, ALIGN BASE PLATE PER CITY ENGINEER. MAINTAIN MINIMUM ADA CLEARANCES AROUND POLE.



# CITY OF CLOVIS

DWG NO.

**ITS-3**

## IP VIEWING DEVICE

REF. STD. SPECIFICATIONS:  
SECTION 82 & 86

APPROVED BY:

NO.

REVISED

BY

APPROVALS

SCALE: NTS

CITY ENGINEER

DATE:

10/26/11

08-04-11

BGJ

CM

DRU

PUD

OTHER

OTHER

OTHER

DRAWN BY: JA

SHEET 1 OF 1