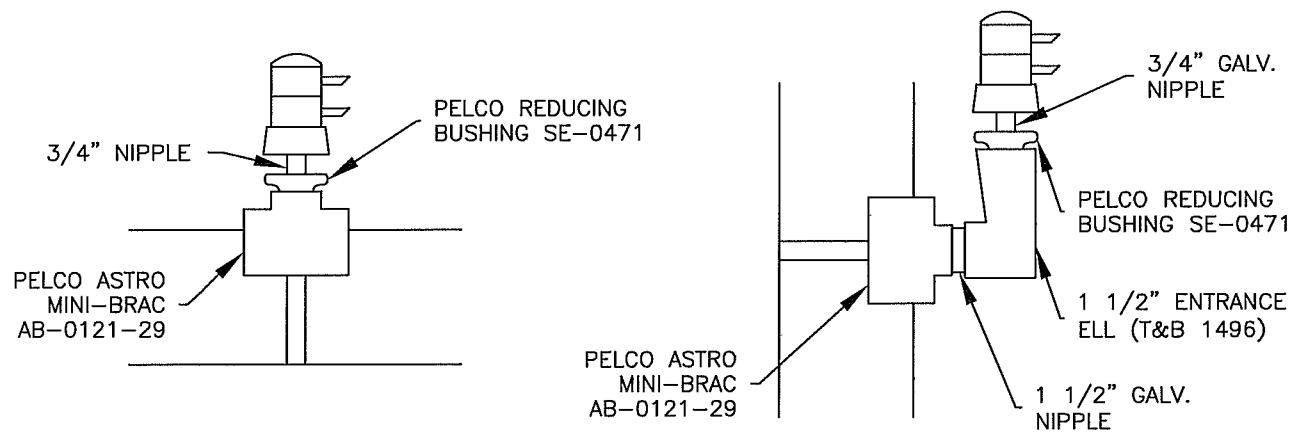


FRAMEWORK MOUNTING



ARM/POLE MOUNTING



**CITY OF CLOVIS**

DWG NO.  
**TS-6B**

**OPTICOM<sup>TM</sup> MISC. MOUNTING FIXTURES**

REF.:  
STANDARD SPEC.  
SECTION 86

APPROVED BY:	NO.	REVISED	BY	APPROVALS	SCALE: NTS
		04-16-09	BGJ		CM
CITY ENGINEER		01-18-11	BGJ	DRU	SHEET 1 OF 1
DATE:				PUD	