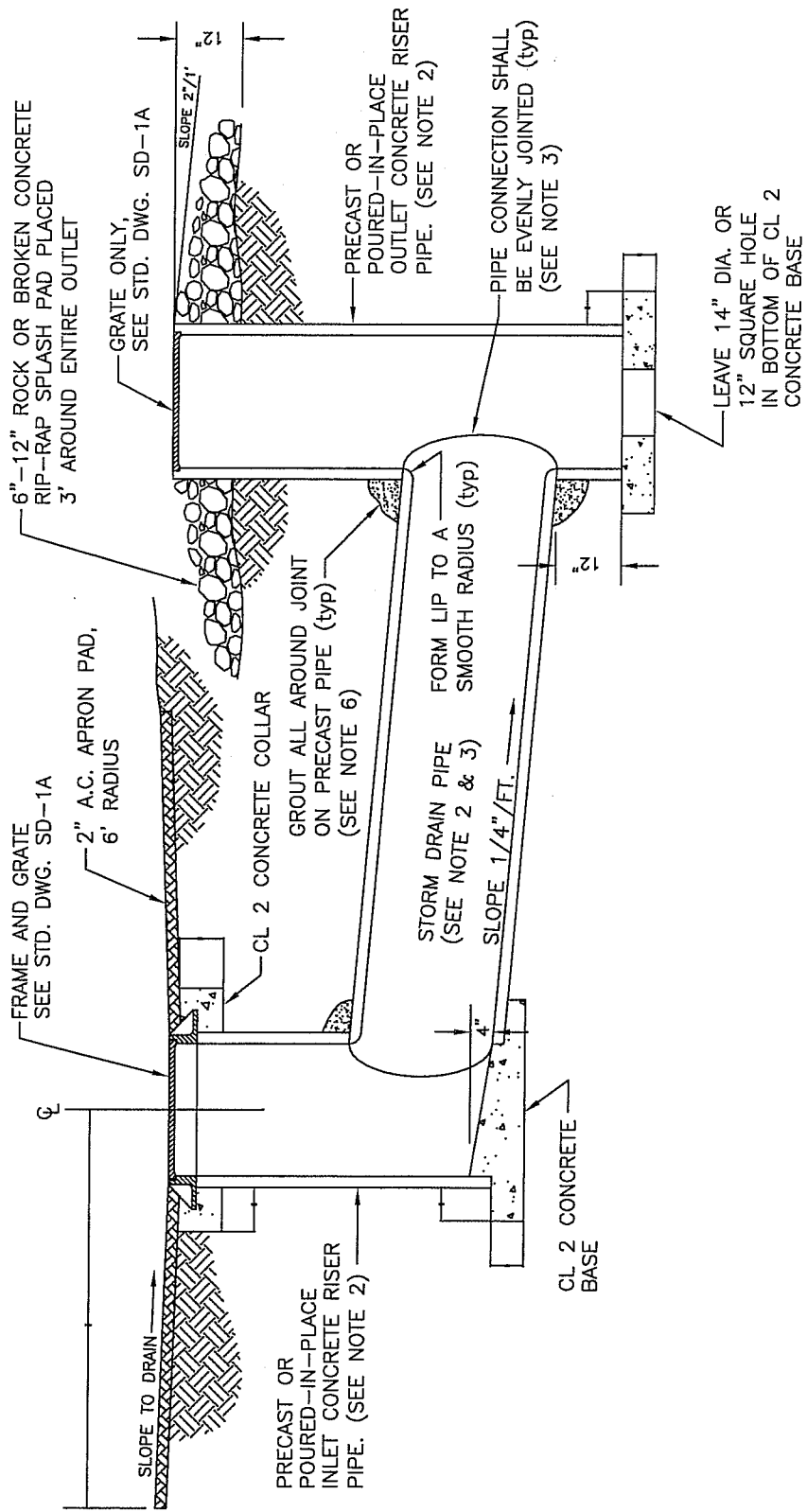


TEMPORARY INLET

TEMPORARY BASIN OUTLET



NOTES:

1. PRECAST CONCRETE RISER PIPE SHALL CONFORM TO A.S.T.M. DESIGNATION C 118. CONCRETE FOR CAST-IN-PLACE SHALL BE CL 2.
2. RISER AND CONNECTOR PIPE SHALL BE 24" DIAM. MIN. UNLESS OTHERWISE NOTED ON THE PLANS.
3. STORM DRAIN PIPE SHALL BE CL III RCP NEATLY CUT AS NECESSARY TO FORM AN EVEN CONNECTION WITH RISER PIPE. IN ADDITION, THE LIP OF THE STORM DRAIN PIPE SHALL BE SMOOTHLY ROUNDED TO AN APPROX. 3" RADIUS ALL AROUND.
4. BASE FOR 24" RISER PIPE SHALL BE CLASS 2 CONCRETE.
5. INLET FLOOR SHALL SLOPE FROM ALL WALLS TO THE FLOWLINE AND SHALL BE GIVEN A STEEL-TROWELED FINISH.
6. CONNECTION JOINT BETWEEN STORM DRAIN PIPE AND RISER PIPE SHALL BE FILLED AND COLLARED WITH MORTAR OR CONCRETE.
7. SEE STD. DWG. SD-1A FOR FRAME AND GRATE DETAILS.
8. FOR CROSS DRAIN APPLICATIONS, USE INLET ON BOTH ENDS. CONNECTOR PIPE SHALL SLOPE 1/4" / FT TO DESIGNATED INLET.



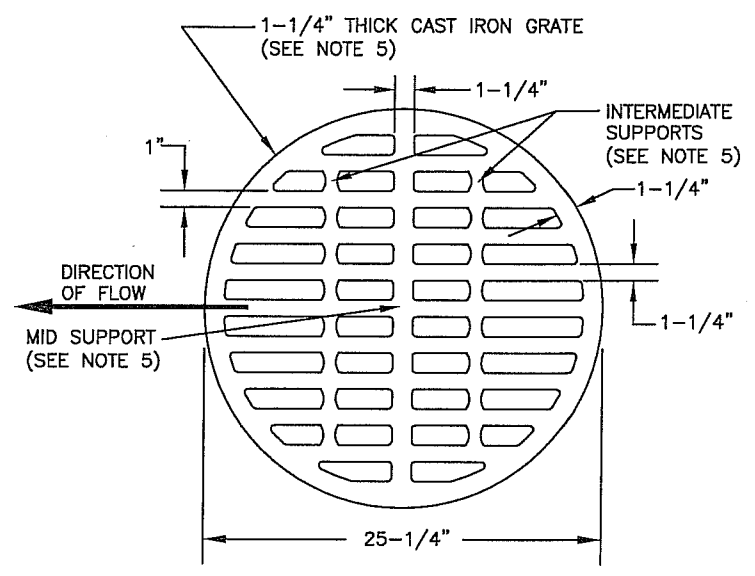
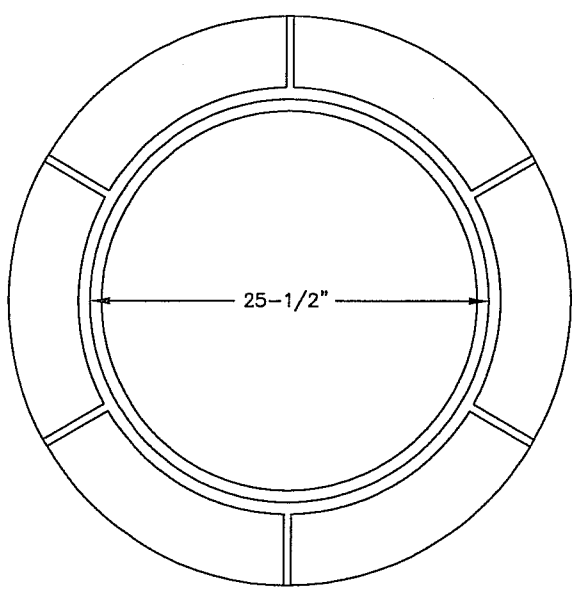
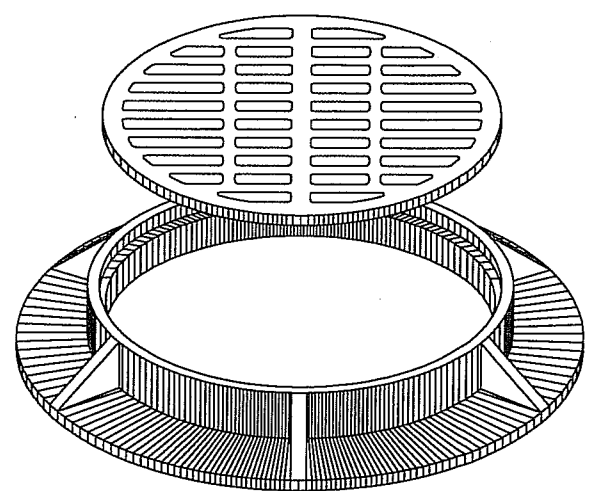
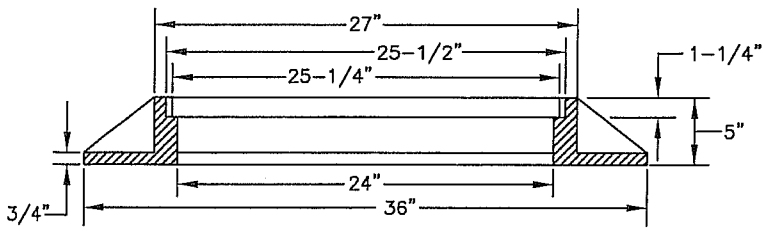
CITY OF CLOVIS

TEMPORARY DRAINAGE INLET AND BASIN OUTLET

DWG NO.
SD-1

REF: STD. SPECIFICATIONS
SECTION 63

APPROVED BY:	NO.	REVISED	BY	APPROVALS	SCALE: NTS
CITY ENGINEER		03-13-09	BGJ	CM <i>dec</i>	DRAWN BY: BGJ
	DATE: 6/29/09			DRU <i>mal</i>	
				PUD <i>dk</i>	



NOTES:

1. ALL DIMENSIONS ARE FINISHED DIMENSIONS. FRAME AND COVER BEARING SURFACE TO BE MACHINED TO ASSURE CLOSE, QUIET FIT.
2. CONSTRUCTION MATERIAL SHALL BE CAST IRON, DIPPED IN BLACK BITUMINOUS PAINT.
3. FRAME AND GRATE TO BE MODEL C-7-SBF 1000 MFG. BY SOUTH BAY FOUNDRY, INC., OR APPROVED EQUAL, CONSTRUCTED IN ACCORDANCE WITH A.S.T.M. DESIGNATION 48, CLASS 35B, AND EXCEED H2O WHEEL LOADING.
4. GRATE TO BE INSTALLED SUCH THAT THE SLOTS ARE PARALLEL WITH THE DIRECTION OF WATER FLOW.
5. GRATES WITH MID AND INTERMEDIATE SUPPORTS SHALL BE USED AT ALL LOCATIONS WHERE BICYCLE OR OTHER WHEELED TRANSPORT SUCH AS WHEEL CHAIRS CAN BE ANTICIPATED. COVERS WITHOUT INTERMEDIATE SUPPORTS SHALL NOT BE USED WITHOUT APPROVAL OF THE CITY ENGINEER.



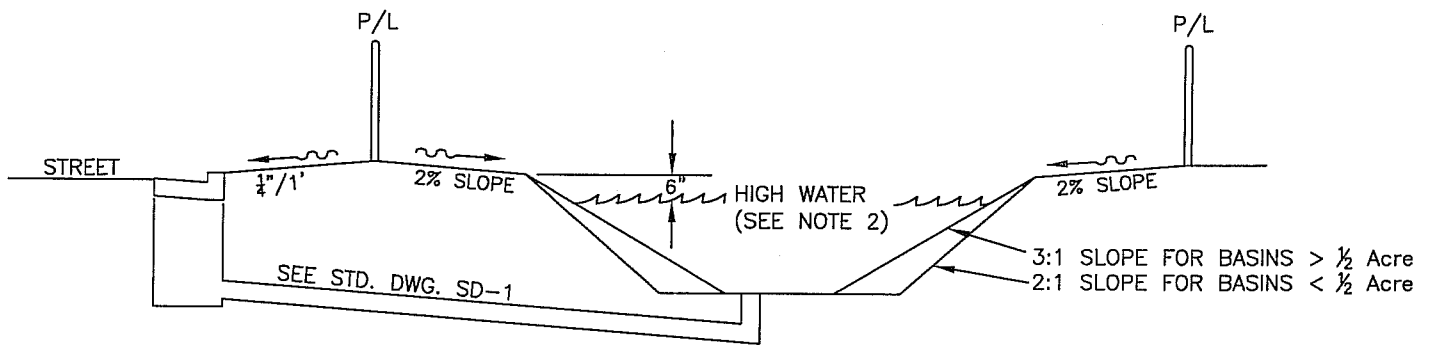
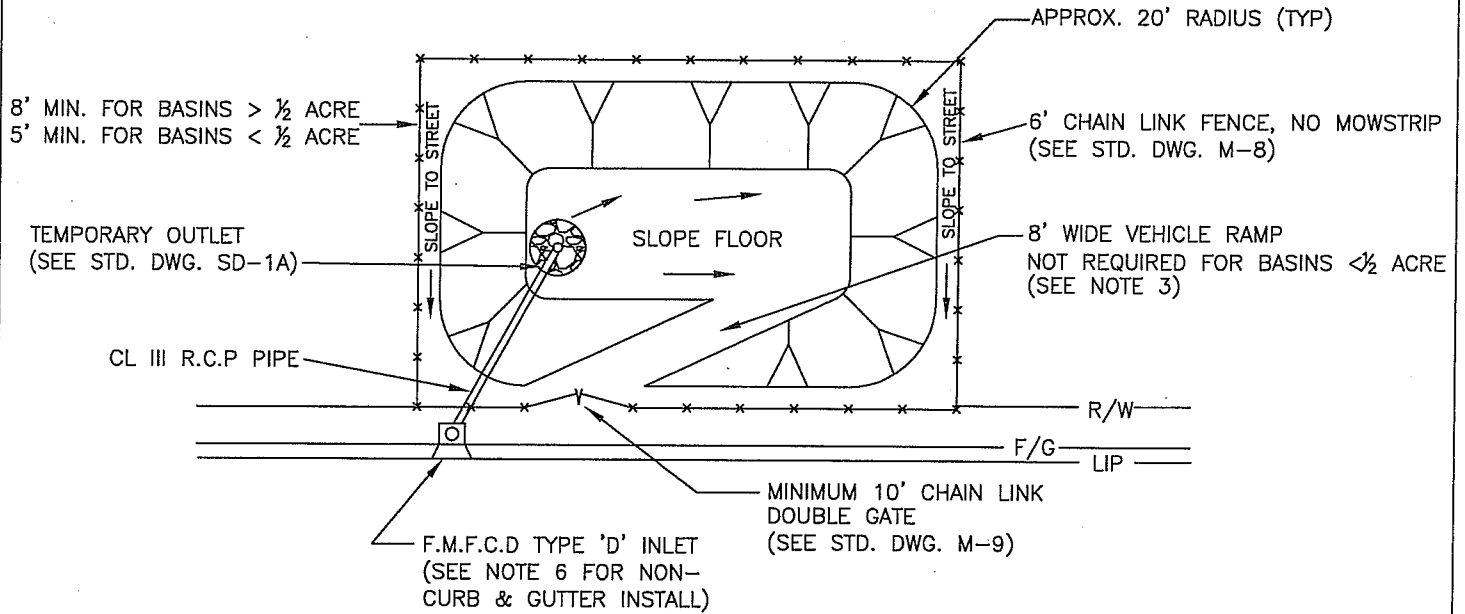
CITY OF CLOVIS

DWG NO.
SD-1A

TEMPORARY INLET FRAME & GRATE

REF: STD. SPECIFICATIONS
SECTION 63

APPROVED BY: CITY ENGINEER DATE: 6/29/09	NO.	REVISED	BY	APPROVALS	SCALE: NTS
		03-13-09	BGJ	CM DRU PUD	DRAWN BY: BGJ SHEET 1 OF 1



CAPACITY

$$V = \frac{5}{12} CA$$

V = REQUIRED CAPACITY IN ACRE FEET
 C = RUNOFF COEFFICIENT OF DRAINAGE AREA
 A = DRAINAGE AREA IN ACRES

NOTES:

1. BASIN SITE SHALL BE GRADED SUCH THAT BASIN DESIGN OVERFLOW MUST BE TO THE STREET.
2. DESIGN HIGH WATER ELEVATION SHALL BE 6" LOWER THAN LOWEST SYSTEM INLET GUTTER FLOWLINE OR POND PERIPHERAL ELEVATION, WHICHEVER IS LOWER.
3. VEHICLE RAMPS SHALL BE 8' MINIMUM WIDTH AND 15% MAXIMUM SLOPE.
4. BASIN SHALL BE COMPLETELY FENCED AND SECURED WITHIN 7 DAYS OF CONSTRUCTION, AND PRIOR TO ANY INTRODUCTION OF WATER.
5. BASIN DEWATERING FACILITIES CONSISTING OF A 4" COUPLER AND CAP, 4" GATE VALVE, UTILITY BOX, AND 4" CLASS 200 PVC DRAIN LINE TO DEWATERING POINT MAY BE REQUIRED.
6. FOR UNIMPROVED OR NON-CURB & GUTTER APPLICATIONS, USE INLET AS SHOWN ON STD. DWG. SD-1.

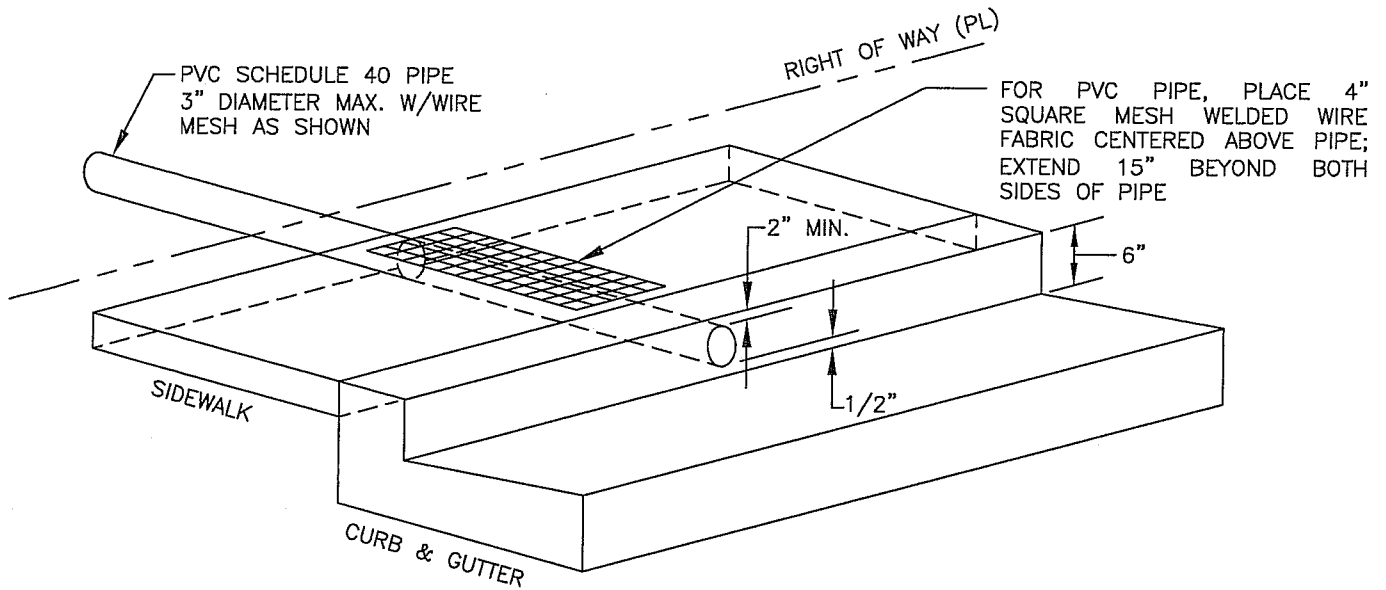


CITY OF CLOVIS

DWG NO.
SD-2

TEMPORARY DRAINAGE BASIN

APPROVED BY:	NO.	REVISED	BY	APPROVALS	SCALE: NTS
CITY ENGINEER		03-13-09	BGJ	CM <i>[Signature]</i>	DRAWN BY: BGJ
	DATE: 6/29/09			DRU <i>[Signature]</i>	
				PUD <i>[Signature]</i>	



NOTES:

1. WHERE SIDEWALK, CURB AND GUTTER EXIST, SIDEWALK, CURB AND GUTTER SHALL BE REMOVED AND REPLACED TO THE NEAREST JOINT AND SHALL BE CONSTRUCTED PER APPLICABLE CITY OF CLOVIS STANDARD DRAWINGS.
2. IT SHALL BE THE CONTRACTOR'S RESPONSIBILITY TO OBTAIN AN ENCROACHMENT PERMIT FOR ANY WORK WITHIN THE CITY RIGHT OF WAY, INCLUDING THE REMOVAL AND REPLACEMENT OF THE SIDEWALK, CURB AND GUTTER AND THE CONSTRUCTION OF THE RESIDENTIAL UNDER SIDEWALK DRAIN, FROM THE CITY OF CLOVIS ENGINEERING DIVISION.
3. THE CONTRACTOR SHALL CALL IN A LOCATION REQUEST TO UNDERGROUND SERVICE ALERT (USA) TWO WORKING DAYS PRIOR TO DIGGING. NO INSPECTION WILL BE PROVIDED AND NO CONSTRUCTION PERMIT ISSUED INVOLVING EXCAVATION FOR UNDERGROUND FACILITIES WILL BE VALID UNLESS THE APPLICANT HAS BEEN PROVIDED AN INQUIRY IDENTIFICATION NUMBER BY USA.
4. THE CONTRACTOR SHALL PROVIDE A CERTIFICATE OF INSURANCE NAMING THE CITY OF CLOVIS AS AN ADDITIONAL INSURED IN ACCORDANCE WITH THE ENCROACHMENT PERMIT PROCESS.
5. THE ENGINEER OF RECORD SHALL DETERMINE THE NUMBER OF DRAINS REQUIRED.



CITY OF CLOVIS

DWG NO.

SD-3

RESIDENTIAL SIDEWALK DRAIN

APPROVED BY:

CITY ENGINEER

DATE: *6/21/09*

NO.

REVISED

BY

APPROVALS

03-13-09

BGJ

CM

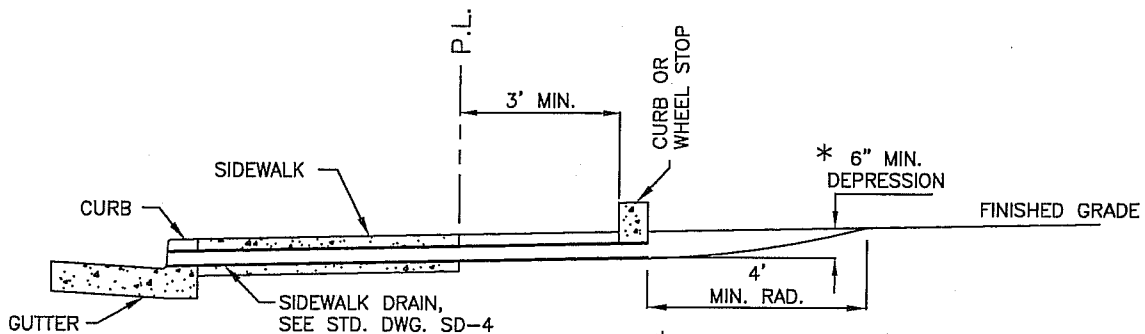
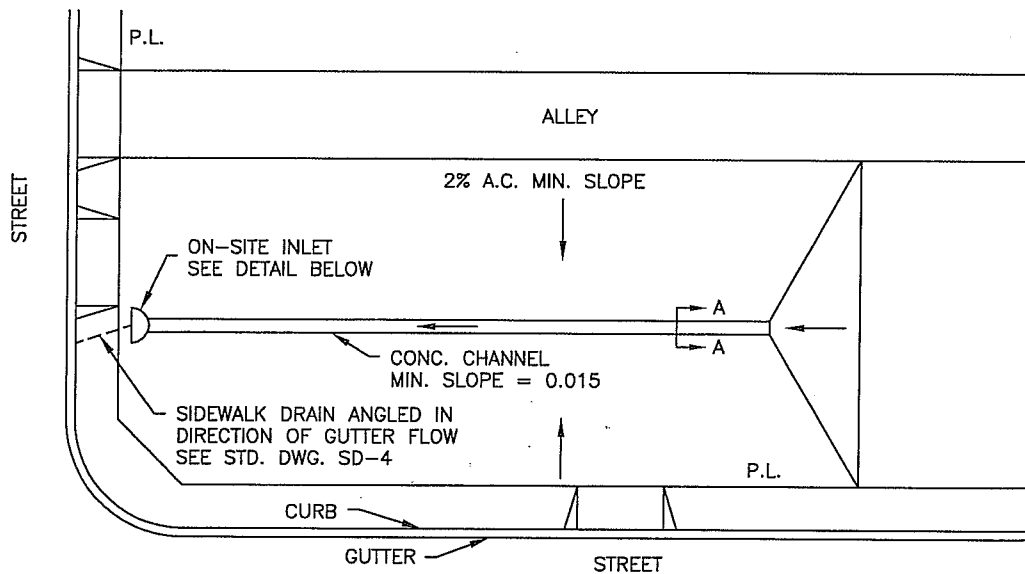
DRU

PUD

SCALE: NTS

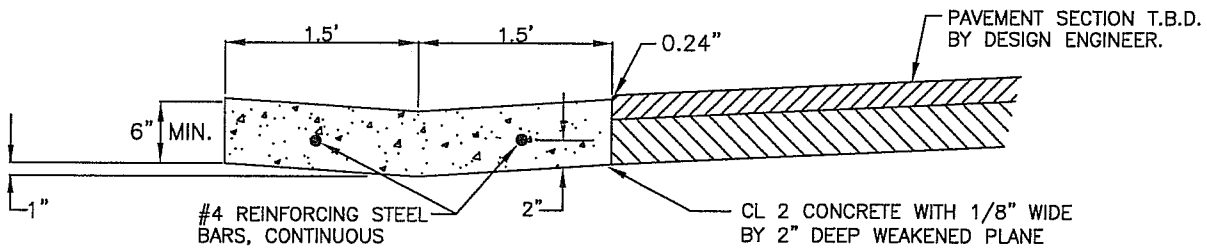
DRAWN BY: SS

SHEET 1 OF 1



ON SITE INLET DETAIL

* IN LIEU OF DEPRESSED INLET A CRISTY NO. U-23 CATCH BASIN (2'x2'x2' MIN. DEPTH) WITH HEAVY DUTY TRAFFIC GRATE TO WITHSTAND TRAFFIC LOADING, OR A BROOKS W-100 SERIES 2'x3' UTILITY BOX NO. 100TG. TRAFFIC GRATE OR APPROVED EQUAL MAY BE USED.



SECTION A-A

SURFACE DRAINAGE TO ALLEY ONLY BY WRITTEN APPROVAL OF THE CITY ENGINEER.



CITY OF CLOVIS

DWG NO.
SD-5

LOT DRAINAGE DETAIL

STANDARD REF:
N.A.

APPROVED BY:

NO.	REVISED	BY	APPROVALS
	03-16-09	BGJ	CM <i>Jan</i> DRU <i>and</i> PUD <i>SLC</i>

SCALE: NTS

CITY ENGINEER

DRAWN BY: JA

DATE: 4/29/09

SHEET 1 OF 1