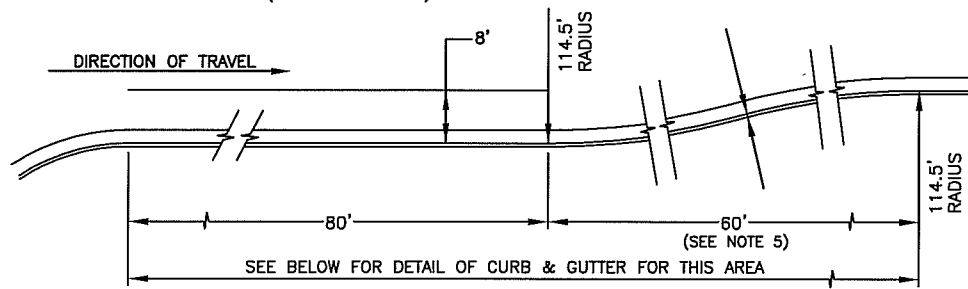
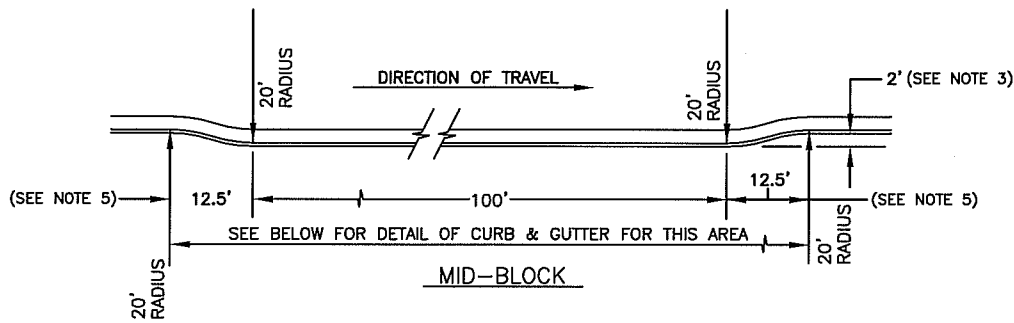


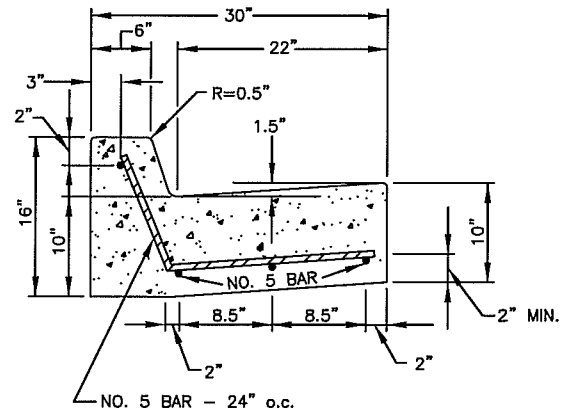
FAR SIDE INTERSECTION
(WITH PARKING LANE)



FAR SIDE INTERSECTION
(WITH NO PARKING LANE)



MID-BLOCK



NOTES:

1. 5' MIN. TRANSITION TO STANDARD CURB & GUTTER.
2. 20" LAP REQUIRED ON ALL BAR SPLICES.
3. WHERE PARKING LANE DOES NOT EXIST, 8' BUS BAY WILL BE REQUIRED.
4. CONCRETE SHALL BE CLASS 1.
5. IF 8' BUS BAY, USE 114.5' RADIUS AND 60' TRANSITION. CURB & GUTTER SUBGRADE COMPACTED TO 95%.



CITY OF CLOVIS

DWG NO.
ST-35

BUS BAYS

REF. STD.
SPECIFICATIONS
SECTION 73

APPROVED BY:

CITY ENGINEER

DATE:

[Handwritten signature]

NO.	REVISED	BY	APPROVALS
	07-09-09	BGJ	CM
	01-14-11	BGJ	DRU PUD

SCALE: NTS

DRAWN BY: JA

SHEET 1 OF 1