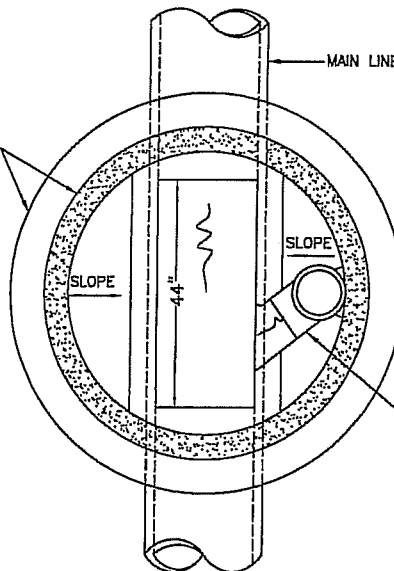
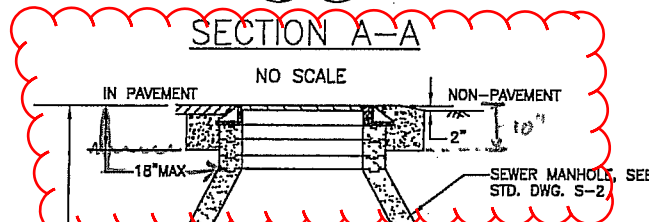


SEWER MANHOLE BASE
AND RISER. SEE CITY
STANDARD S-2 AND
NOTE 1.



ROTATE 90° STREET ELBOW SO
IT ENTERS MAIN LINE AT 45°
ANGLE AS SHOWN.

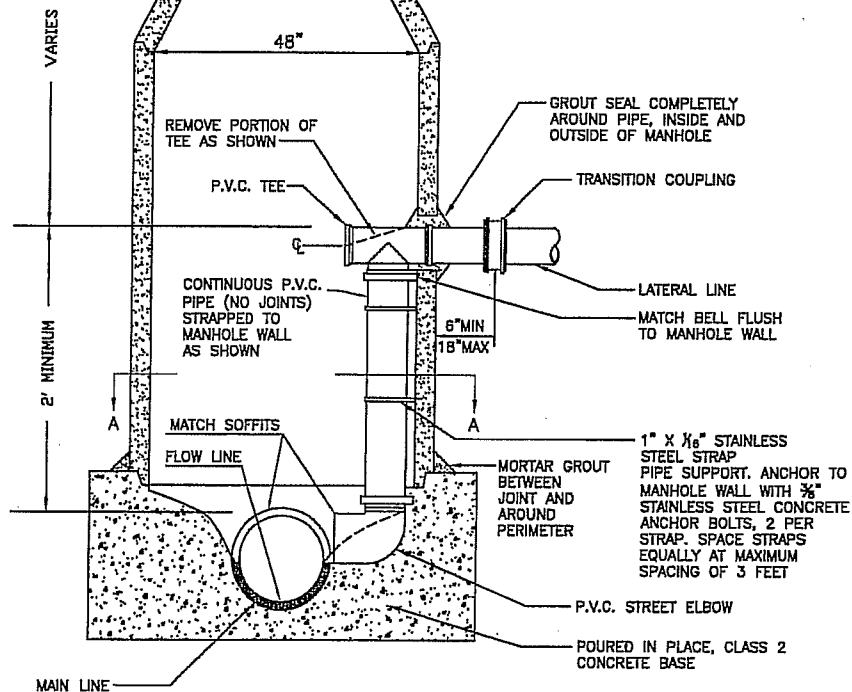
SECTION A-A



REQUEST:
PER STEVE
STAGNER.

NOTES

1. MANHOLE SHALL BE CONSTRUCTED IN ACCORDANCE WITH CITY STANDARD DRAWING S-2.
2. A DROP MANHOLE SHALL BE USED WHENEVER THE DIFFERENCE BETWEEN THE SOFFIT OF THE MAIN LINE AND THE SOFFIT OF THE LATERAL LINE IS TWO FEET OR GREATER.
3. ALL DROP PIPE MATERIALS SHALL BE A MINIMUM OF 8" PVC ASTM D3034-73 PSIG, SDR-35 OR LARGER TO MATCH LATERAL SIZE.
4. DROP MANHOLES ARE TO BE ALLOWED ONLY UPON SPECIAL AUTHORIZATION OF THE CITY ENGINEER.



TYPICAL SECTION



CITY OF CLOVIS

DWG NO.

S-4

INSIDE DROP MANHOLE

REF. STD. SPECIFICATIONS
SECTION 64

APPROVED BY:

NO.

REVISED

BY

APPROVALS

SCALE: NTS

CITY ENGINEER

DATE:

6/29/09

03-13-09

BGJ

CM

DRU

PUD

DRAWN BY: BGJ

SHEET 1 OF 1