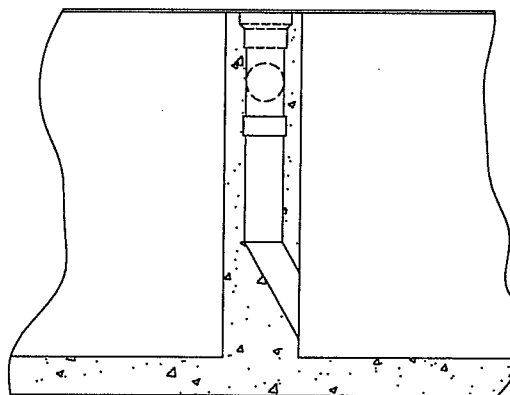
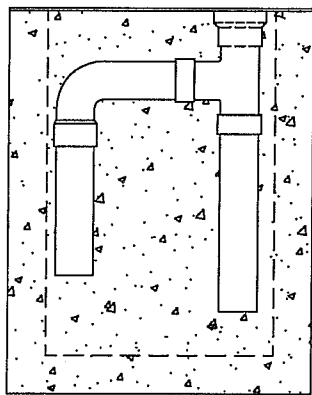
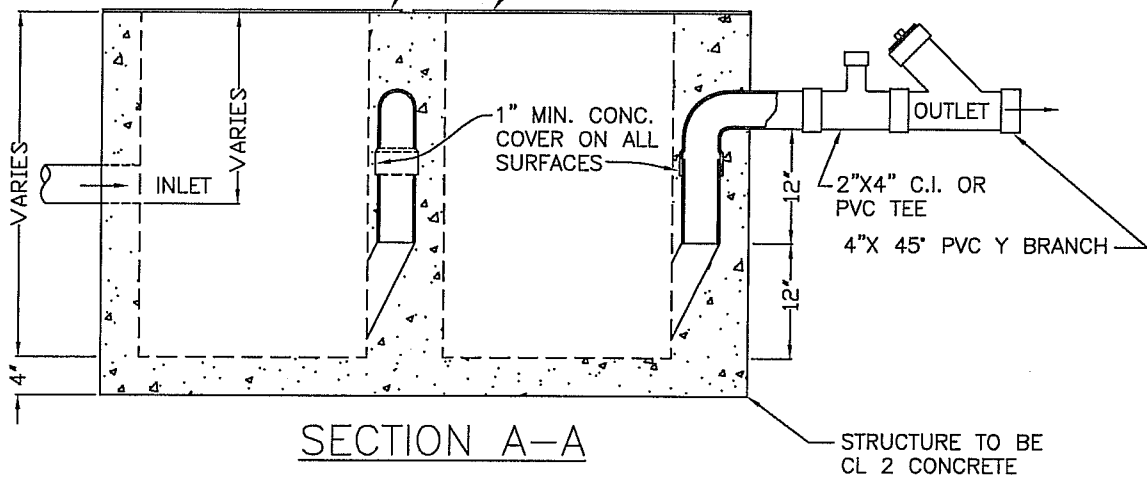


32"X32" BOILER PLATE COVER 1/4" THICK,
1/2" PERFORATION, 3" ON CENTERS

36"X32" BOILER PLATE COVER 1/4" THICK,
NO PERFORATION



CITY OF CLOVIS

COMMERCIAL & INDUSTRIAL GREASE TRAP

DWG NO.

S-11

STANDARD REF:

U.B.C.

APPROVED BY:

NO.

REVISED

BY

APPROVALS

SCALE: NTS

CITY ENGINEER

DATE:

6/29/09

NO.

REVISED

BY

CM

DRU

PUD

03-04-09

BGJ

JTC

MAL

SK

DRAWN BY: BGJ

SHEET 1 OF 1