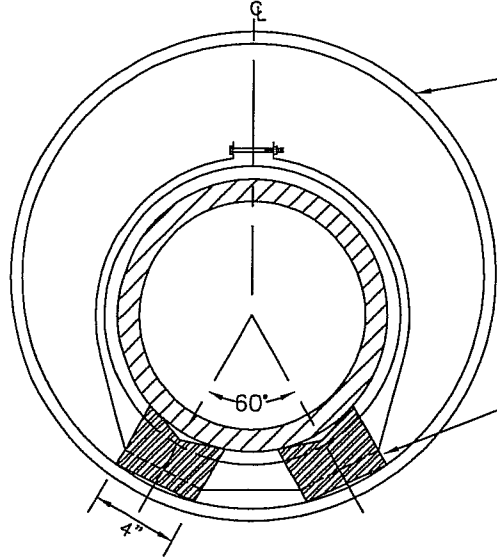
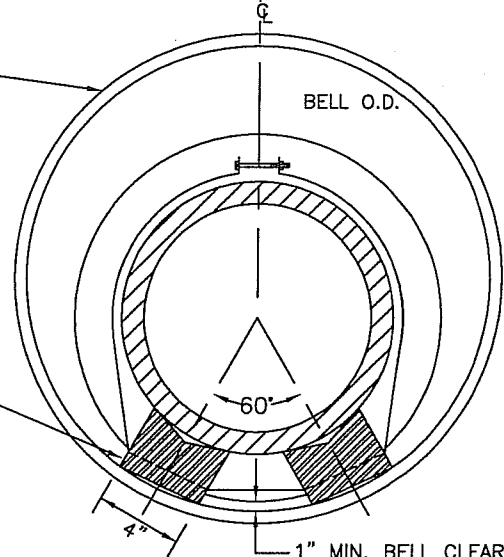


BELL-LESS PIPE



SECTION A-A

BELL PIPE



SECTION B-B

NOTES:

1. CASING PIPE SHALL BE BUTT WELDED SHEETS, ASTM A-570 COMMERCIAL GRADE OR BUTT WELDED PLATES, ASTM A-283. SIZE AND STRENGTH AS SHOWN ON PLANS.
2. CASING SPACERS SHALL BE PREFABRICATED STAINLESS STEEL DESIGNED & MFG. BY PIPELINE SEAL & INSULATOR, INC., HOUSTON, TX., OR APPROVED EQUAL. FOR CARRIER PIPES 24" DIAM. OR LESS, USE PSI MODEL S8G-2; GREATER THAN 24" USE PSI MODEL S12G-2.
3. CASING SPACERS SHALL BE SPECIFICALLY DESIGNED AND FABRICATED FOR THE SPECIFIC PROJECT, AND ELECTRICALLY ISOLATE CARRIER PIPE FROM CASING PIPE.
4. SPACER BANDS SHALL BE 304 STAINLESS STEEL, 8" WIDE FOR PIPES 24" DIAM. OR LESS, AND 12" WIDE FOR PIPES LESS THAN 42" DIAM.
5. SPACER BANDS SHALL BE 3 OR MORE SEGMENT, 12 GA. BANDS TO BE FITTED WITH FLEXIBLE PVC LINER ON INNER SURFACE OF BAND; LINER TO BE 0.09" THICK, HARDNESS OF 85-90 (ASTM D2240, DUROMETER "A"), DIELECTRIC STRENGTH NOT LESS THAN 58,000 VOLTS (ASTM D149). HARDWARE TO BE STAINLESS STEEL.
6. CASING ENDS SHALL BE SEALED WITH PIPELINE SEAL & INSULATOR, INC. MODEL "C" OR MODEL "S", OR APPROVED EQUAL. CONCRETE SHALL NOT BE USED UNLESS SPECIFICALLY APPROVED BY THE CITY ENGINEER OR IS SHOWN ON THE PLANS.


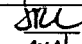

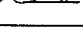


CITY OF CLOVIS

DWG NO.
S-10

INSTALLATION OF CARRIER PIPE IN JACKED STEEL CASING

REF. STD. SPECIFICATIONS
SECTION 68

APPROVED BY:	NO.	REVISED	BY	APPROVALS	SCALE: NTS
CITY ENGINEER 		03-04-09	BGJ	CM  DRU  PUD 	DRAWN BY: BGJ
	DATE: 6/29/09				SHEET 1 OF 1