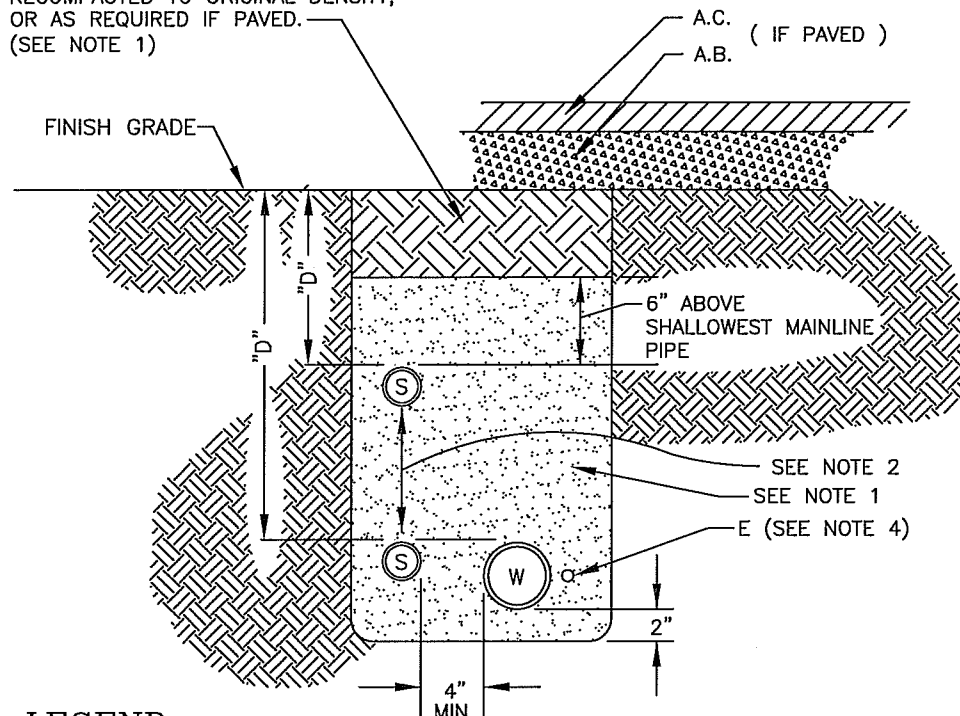


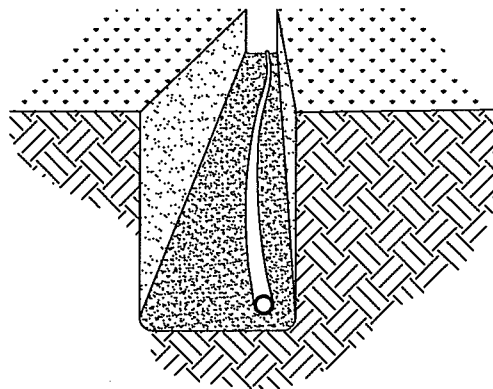
SALVAGED EXCAVATED FILL
RECOMPACTED TO ORIGINAL DENSITY,
OR AS REQUIRED IF PAVED.
(SEE NOTE 1)



LEGEND

- W WATER SUPPLY LINE
S SPRINKLER LINE
E ELECTRICAL WIRING, INCLUDES
LOW VOLTAGE AND/OR 120 V. SERVICE

SNAKE PIPE A MINIMUM OF 1' PER 100' OF
PIPE TO ALLOW EXPANSION AND CONTRACTION



NOTES:

1. SAND BEDDING/APPROVED BACKFILL REQUIRED TO 6" ABOVE MAINLINE PIPE. REMAINDER MAY BE FILLED WITH RECOMPACTED EXCAVATED FILL DIRT FREE OF UNSUITABLE MATERIAL, ROCKS, AND HARDPAN.
2. SPRINKLER LINE COVER, "D" MAINLINES, D=24" MINIMUM MAINLINE WITH SLEEVE UNDER PAVEMENT, D=24" NON-PRESSURE ROTARY POP-UP LATERALS, D=18" NON-PRESSURE POP-UP SPRAY HEAD LINES, D=12"
3. WATER SUPPLY AND SPRINKLER LINES SHALL BE INSTALLED IN GALVANIZED IRON SLEEVING UNDER PAVEMENT OR HARDSCAPE. SLEEVES TO BE 2" GREATER I.D.
4. 120 V ELECTRICAL WIRING SHALL BE IN PVC SCHEDULE 40 TYPE II. LOW VOLTAGE WIRING (24 V) SHALL BE IN CONDUIT UNDER PAVEMENT OR HARDSCAPE, OR DIRECT BURIAL IN UNPAVED AREAS.



CITY OF CLOVIS

IRRIGATION TRENCHING

DWG NO.

P-1

REF: STD. SPECS
SECTION 21, LANDSCAPE
IRRIGATION SYSTEMS

APPROVED BY:

CITY ENGINEER

DATE:

NO.

REVISED

BY

APPROVALS

01-28-11

BGJ

CM

DRU

PUD

OTHER

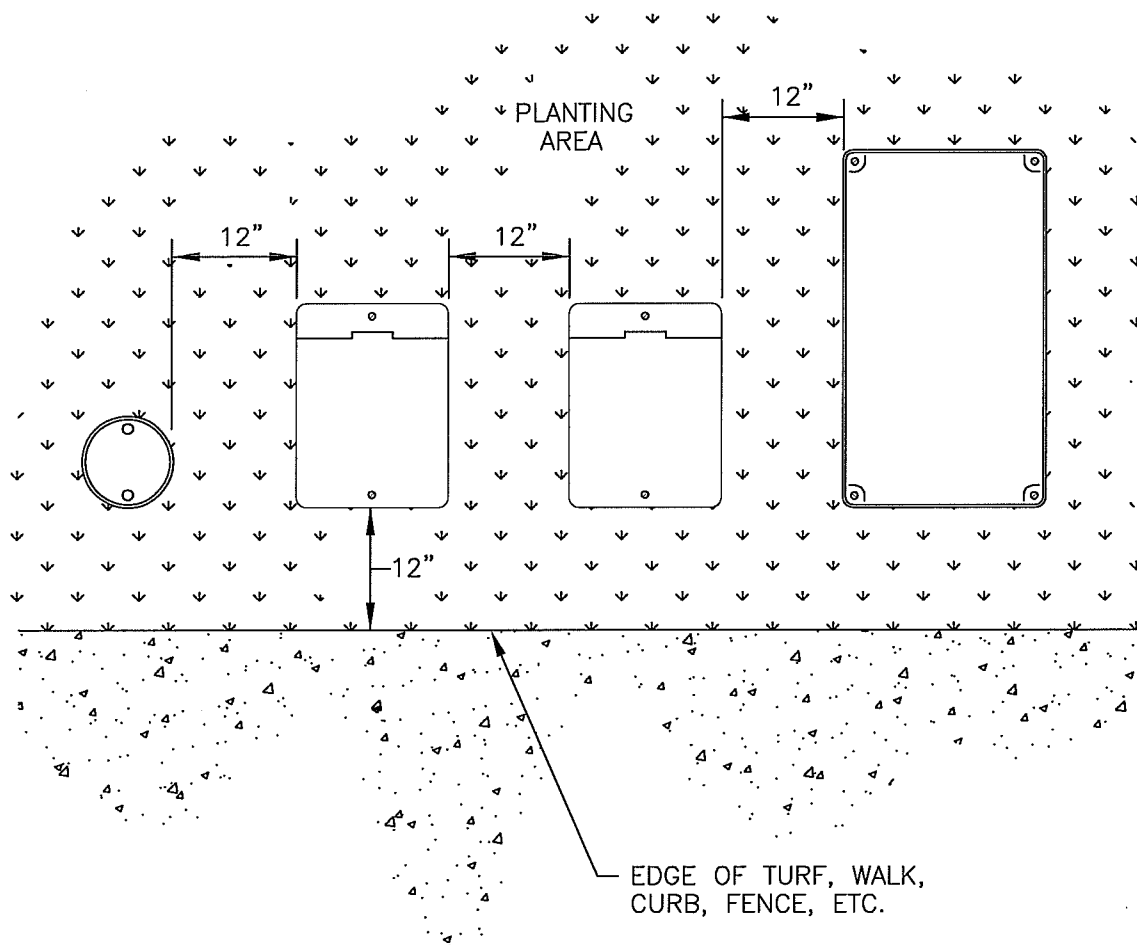
OTHER

OTHER

SCALE: NTS

DRAWN BY: JA

SHEET 1 OF 1



NOTES:

1. MAINTAIN 12" SEPARATION BETWEEN BOXES, AND FROM CONCRETE IMPROVEMENTS. BOXES TO BE PARALLEL TO EACH OTHER AND PERPENDICULAR TO CONCRETE IMPROVEMENTS.
2. WHEREVER POSSIBLE, BOXES SHOULD BE LOCATED IN GROUND COVER OR SHRUB AREAS RATHER THAN TURF AREAS.
3. TOP OF BOXES TO BE SET 1" ABOVE GROUND IN GROUND COVER AND SHRUB AREAS, OR EVEN WITH GROUND LEVEL IN TURF AREAS.
4. VALVES, ETC. TO BE CENTERED INSIDE BOXES TO FACILITATE SERVICING.
5. AVOID HEAVILY COMPACTING SOIL AROUND BOXES TO PREVENT COLLAPSING OR DEFORMING SIDES OF THE BOXES.



CITY OF CLOVIS

VALVE BOX LOCATION

DWG NO.

P-2

REF: STD. SPECS
SECTION 21, LANDSCAPE
IRRIGATION SYSTEMS

APPROVED BY:

NO.

REVISED

BY

APPROVALS

SCALE: NTS

CITY ENGINEER

DATE:

01-19-11

BGJ

CM

DRU

PUD

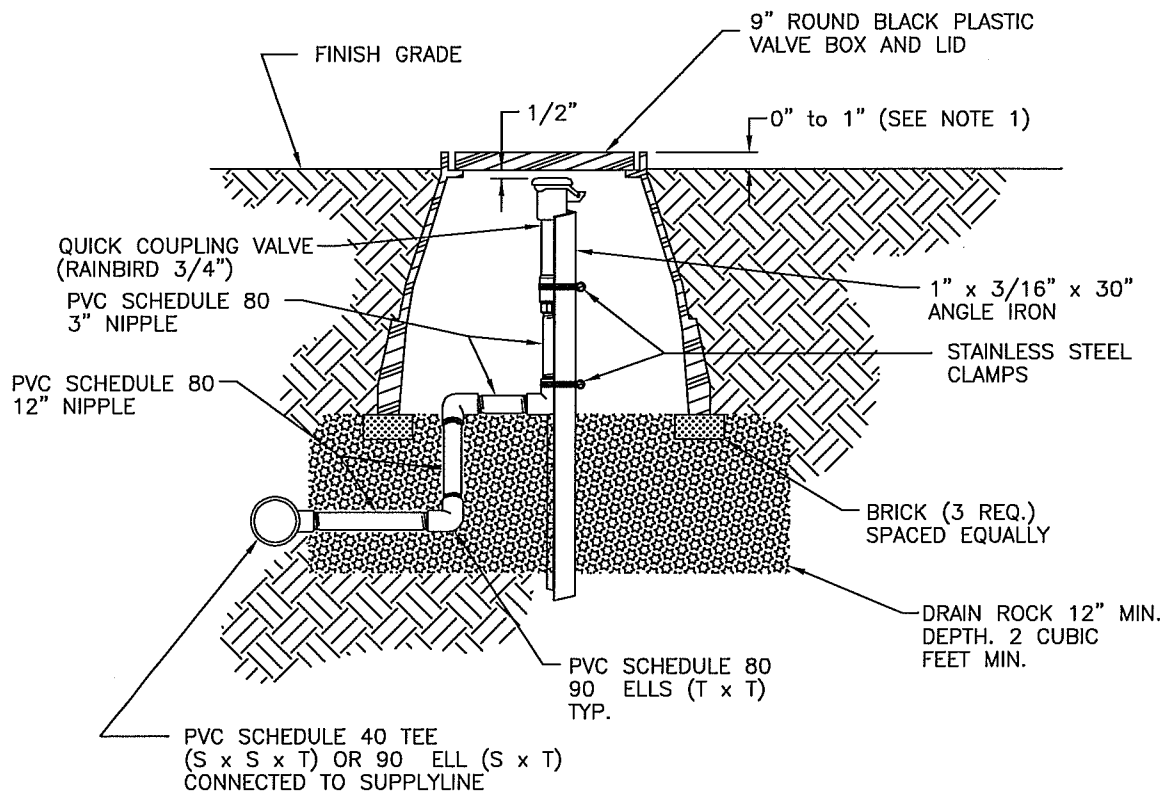
OTHER

OTHER

OTHER

DRAWN BY: JA

SHEET 1 OF 1



NOTES:

1. SET TOP OF BOX EVEN WITH FINISH GROUND LEVEL IN TURF AREAS, 1" ABOVE GROUND LEVEL IN GROUND COVER AND SHRUB AREAS.



CITY OF CLOVIS

QUICK COUPLING VALVE

DWG NO.

P-4

REF: STD. SPECS
SECTION 21, LANDSCAPE
IRRIGATION SYSTEMS

APPROVED BY:

NO.

REVISED

BY

APPROVALS

SCALE: NTS

CITY ENGINEER

DATE:

01-28-11

BGJ

CM

DRU

PUD

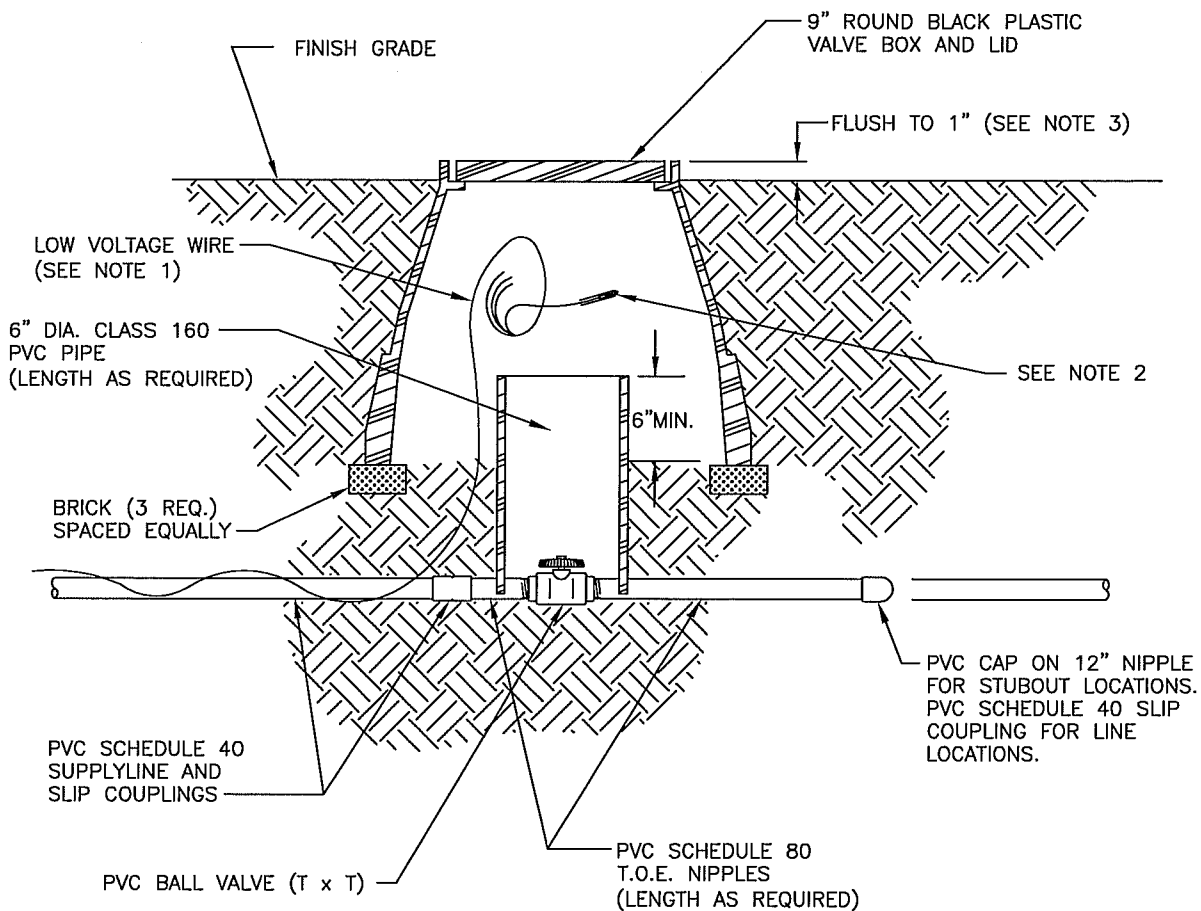
OTHER

OTHER

OTHER

DRAWN BY: JA

SHEET 1 OF 1



NOTES:

1. IN STUBOUT LOCATIONS, A MINIMUM OF 36" OF EXCESS LOW VOLTAGE WIRE TO BE COILED AND STORED FOR FUTURE USE.
2. IN STUBOUT LOCATIONS, THE COMMON WIRE SHALL BE TERMINATED WITH A WATERPROOF INSULATING CONNECTOR. SEE STANDARD DRAWING FOR WIRE CONNECTOR.
3. SET TOP OF BOX EVEN WITH FINISH GROUND LEVEL IN TURF AREAS, 1" ABOVE GROUND LEVEL IN GROUND COVER AND SHRUB AREAS.



CITY OF CLOVIS

BALL VALVE

DWG NO.

P-5

REF: STD. SPECS
SECTION 21, LANDSCAPE
IRRIGATION SYSTEMS

APPROVED BY:

CITY ENGINEER

DATE:

NO.

REVISED

BY

APPROVALS

01-19-11

BGJ

CM

DRU

PUD

OTHER

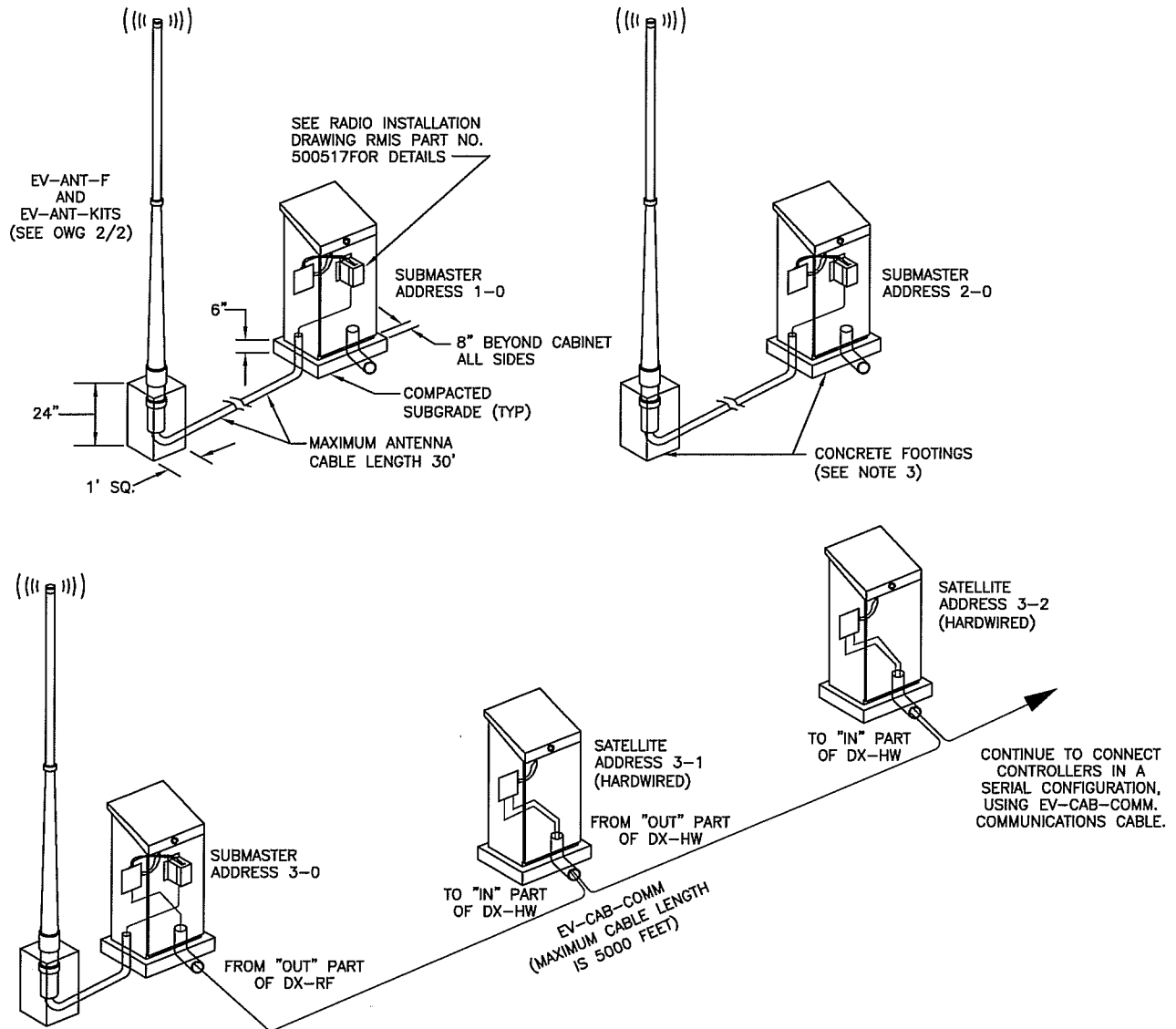
OTHER

OTHER

SCALE: NTS

DRAWN BY: JA

SHEET 1 OF 1



NOTES:

- RADIO COMMUNICATIONS SYSTEM SHALL BE "RAINMASTER DX-2."
- LOCATION AND INSTALLATION SHALL BE AS SHOWN ON THE PROJECT PLANS AND PER MANUFACTURER'S RECOMMENDATIONS.
- FOOTINGS FOR RADIO PEDESTAL AND ANTENNA SHALL BE CL 2 CONCRETE.



CITY OF CLOVIS

IRRIGATION RADIO COMMUNICATIONS

DWG NO.

P-6

REF: STD. SPECS
SECTION 21, LANDSCAPE
IRRIGATION SYSTEMS

APPROVED BY:

CITY ENGINEER

DATE:

NO.

REVISED

BY

APPROVALS

SCALE: NTS

01-20-11

BGJ

CM

DRU

PUD

OTHER

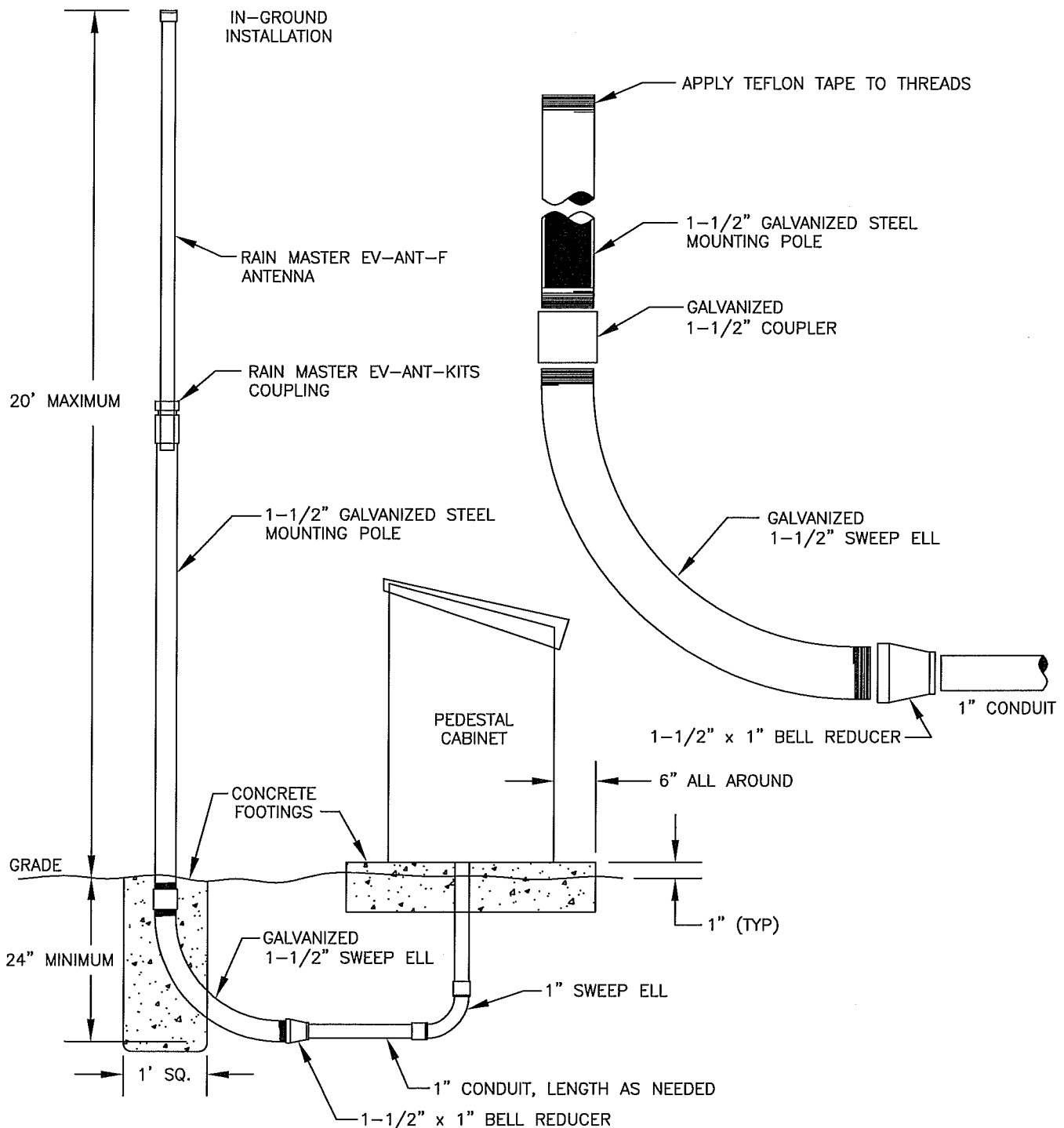
OTHER

OTHER

DRAWN BY: BGJ

SHEET 1 OF 1

10/25/11



NOTES:

1. ANTENNA SHALL BE "RAINMASTER DX-2" AS SHOWN.
2. FOOTINGS SHALL BE CLASS 2 CONCRETE.



CITY OF CLOVIS

DWG NO.

P-6A

IRRIGATION RADIO COMMUNICATION SYSTEM DETAIL

REF: STD. SPECS
SECTION 21, LANDSCAPE
IRRIGATION SYSTEMS

APPROVED BY:

CITY ENGINEER

DATE:

Handwritten signature and date: 9/29/11

NO.

REVISED

BY

APPROVALS

01-20-11

BGJ

CM

DRU

PUD

OTHER

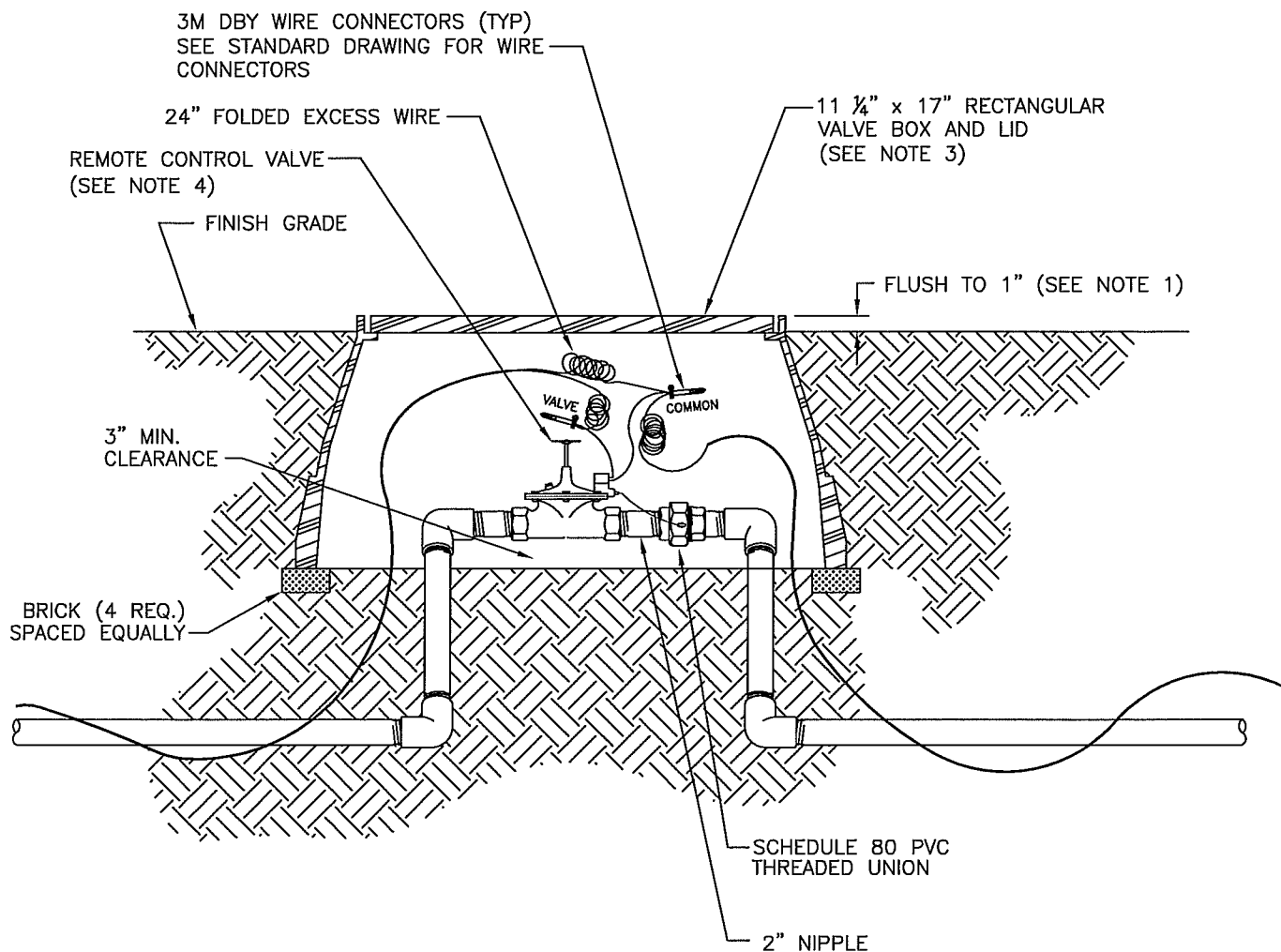
OTHER

OTHER

SCALE: NTS

DRAWN BY: BGJ

SHEET 1 OF 1



NOTES:

1. SET TOP OF BOX EVEN WITH FINISH GROUND LEVEL IN TURF AREAS; 1" ABOVE GROUND LEVEL IN GROUND COVER AND SHRUB AREAS.
2. ALL PIPING AND FITTINGS SHALL CONFORM TO STD. SPEC. SECTION 21.5 "MATERIALS".
3. VALVE BOX SHALL BE CHRISTY FIBERLYTE, 11 1/4" X 17".
4. REMOTE CONTROL VALVE SHALL BE IRRITROL SERIES 100 OR 102.
5. CONTROL WIRING SHALL BE DIRECT BURIAL AWG-UF TYPE; "HOT" WIRE NOT SMALLER THAN AWG NO. 14; COMMON WIRE NOT SMALLER THAN AWG NO. 12.



CITY OF CLOVIS REMOTE CONTROL VALVE

DWG NO.
P-7

STANDARD REF:
N.A.

APPROVED BY:

NO.

REVISED

BY

APPROVALS

SCALE: NTS

CITY ENGINEER

DATE:

1/24/11

01-19-11

BGJ

CM

DRU

PUD

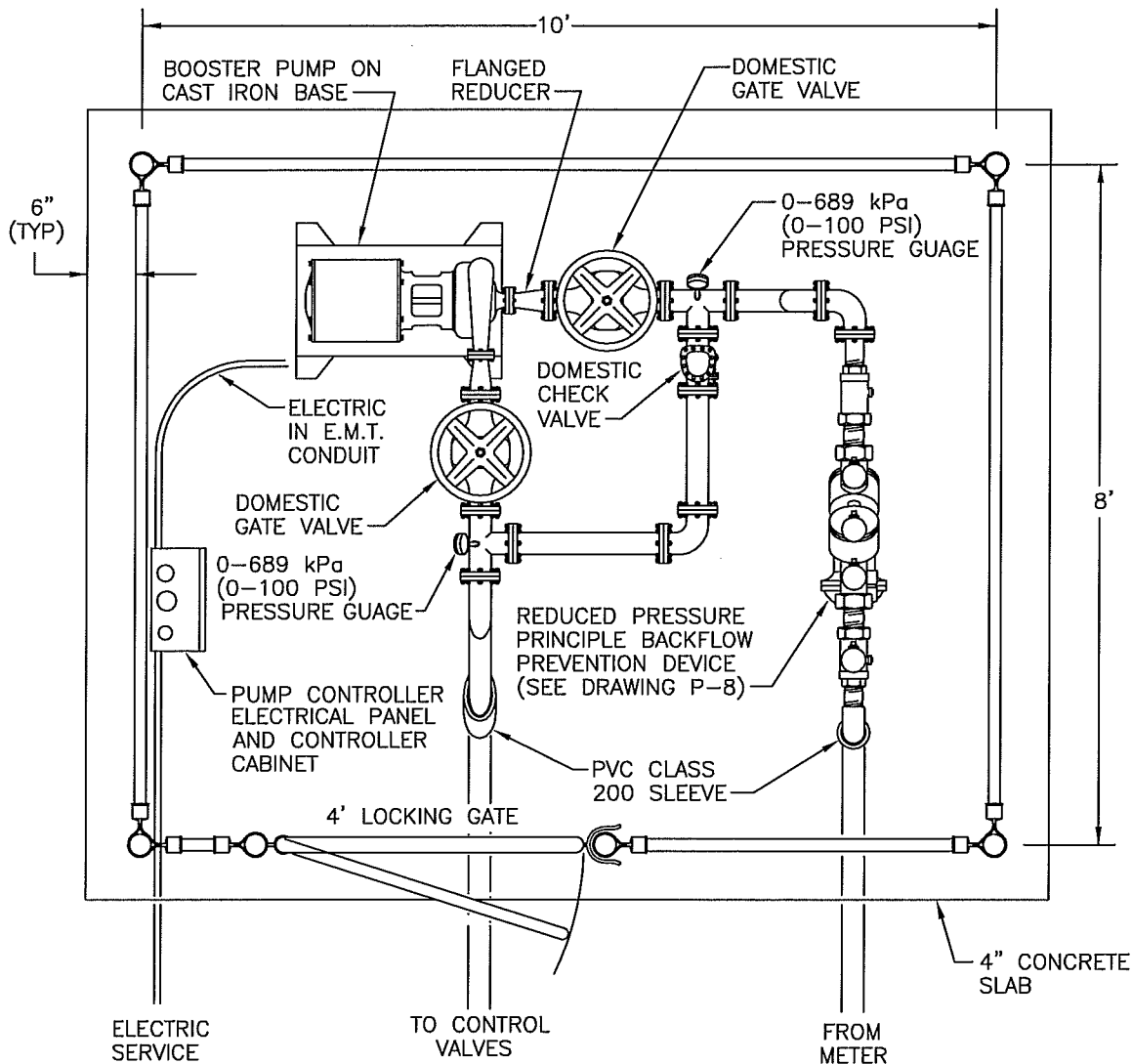
OTHER

OTHER

OTHER

DRAWN BY: JA

SHEET 1 OF 1



NOTES:

1. HARDWARE SIZES (SERVICE SIZE) TO BE DETERMINED BY ENGINEER. ALL HARDWARE DOWNSTREAM OF BACKFLOW PREVENTER TO HAVE FLANGED CONNECTIONS.
2. DOMESTIC GATE VALVES TO BE SUPPORTED ON 2" PIPE SUPPORTS MOUNTED W/FLANGES ON CONCRETE PAD. ADDITIONAL SUPPORTS MAY BE REQUIRED ON LARGE SERVICES.
3. ENCLOSURE TO CONSIST OF CHAINLINK FENCE WITH DECORATIVE VERTICAL SLATS AND LOCKING GATE. SEE DRAWINGS ST-34, ST-34A.
4. ABOVE GROUND PIPE AND FITTINGS TO BE WRAPPED AND TIED WITH INSULATION AND BURLAP.



CITY OF CLOVIS

BOOSTER PUMP LAYOUT

DWG NO.
P-9

STANDARD REF:
N.A.

APPROVED BY:

CITY ENGINEER

DATE:

NO.

REVISED

BY

APPROVALS

01-28-11

BGJ

CM

DRU

PUD

OTHER

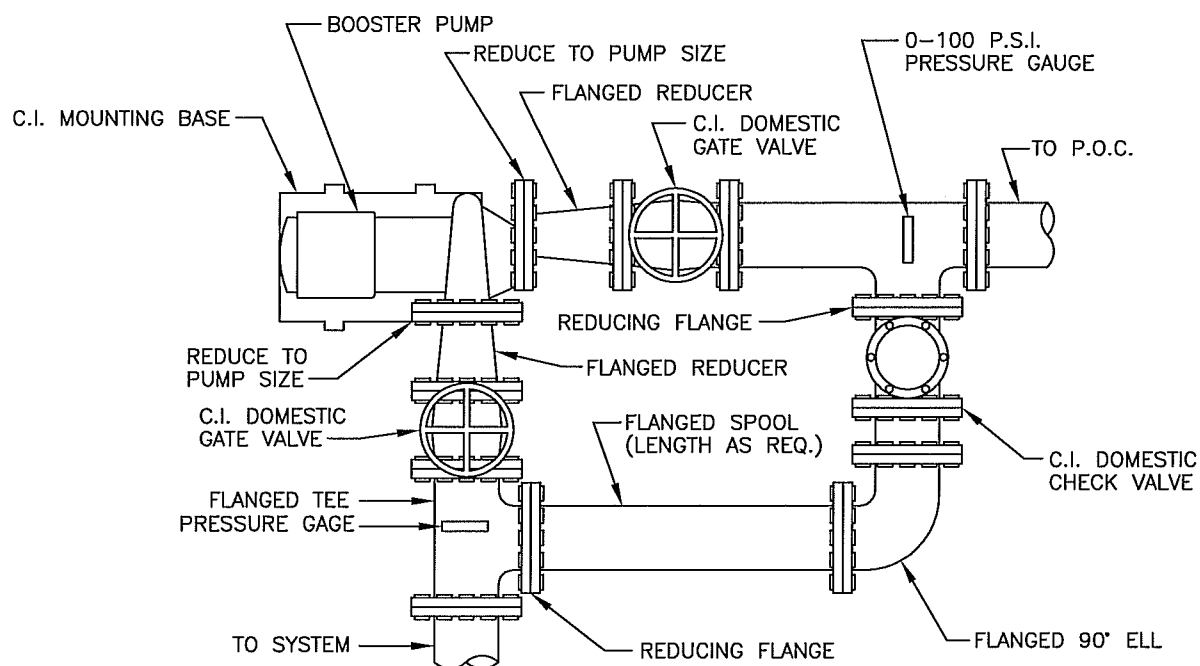
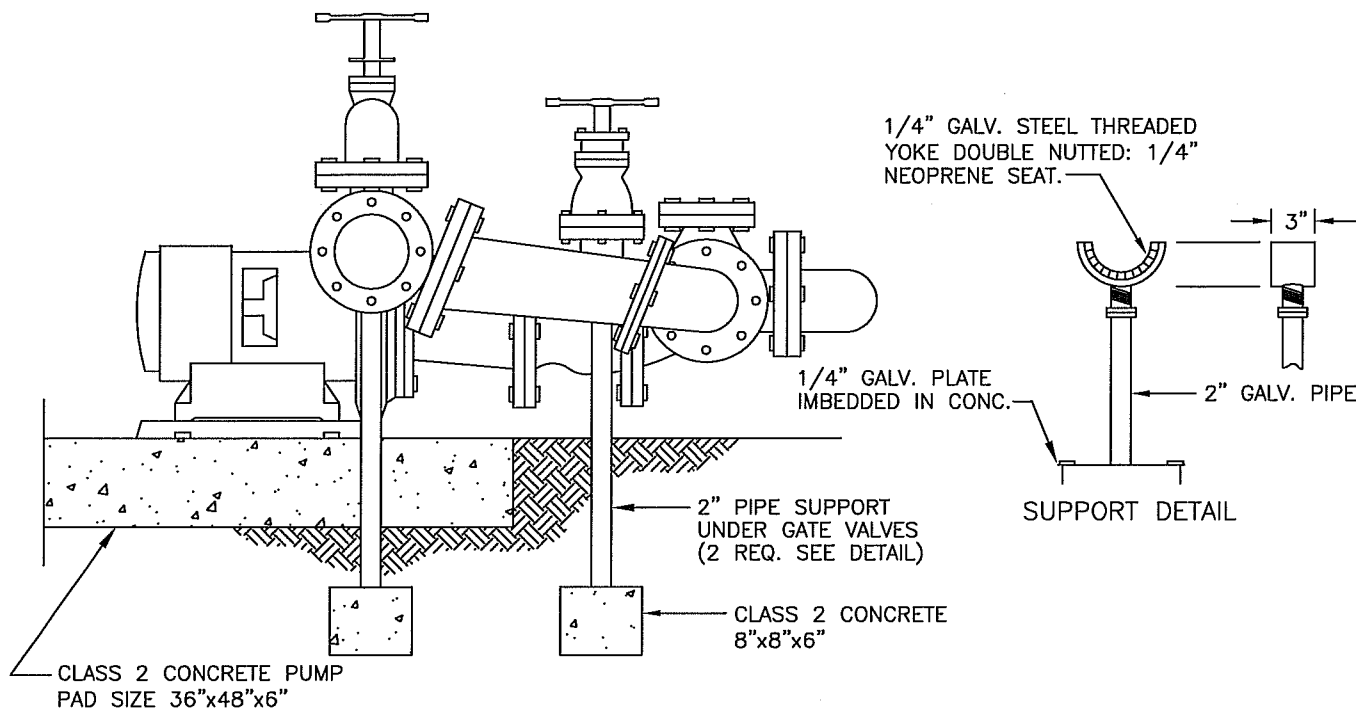
OTHER

OTHER

SCALE: NTS

DRAWN BY: JA

SHEET 1 OF 1



CITY OF CLOVIS

FLANGED BOOSTER PUMP

DWG NO.
P-9A

STANDARD REF:
N.A.

APPROVED BY:

CITY ENGINEER

DATE:

7/29/11

NO.

REVISED

BY

APPROVALS

01-20-11

BGJ

CM

DRU

PUD

OTHER

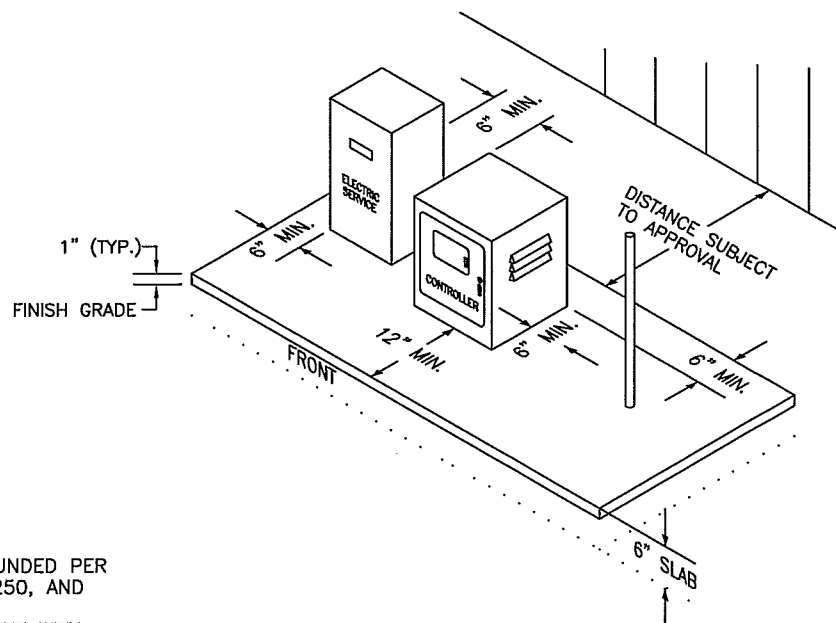
OTHER

OTHER

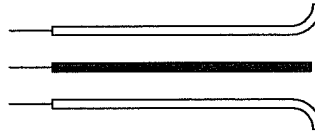
SCALE: NTS

DRAWN BY: JA

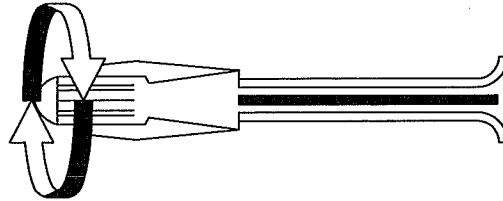
SHEET 1 OF 1



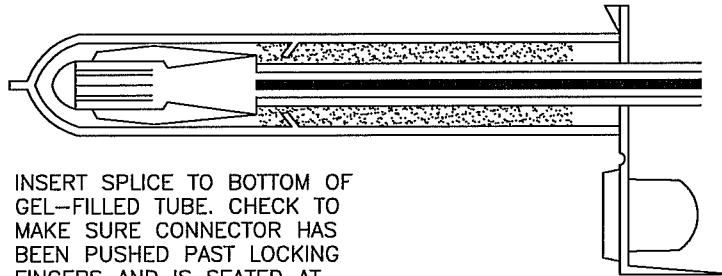
OTHER



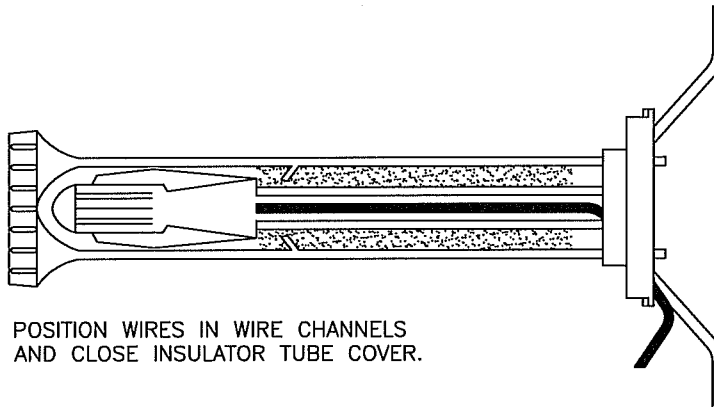
STEP 1: STRIP WIRES 1/2" FROM ENDS.



STEP 2: APPLY SCOTCHLOK Y SPRING CONNECTOR IN A CLOCKWISE DIRECTION.



STEP 3: INSERT SPLICE TO BOTTOM OF GEL-FILLED TUBE. CHECK TO MAKE SURE CONNECTOR HAS BEEN PUSHED PAST LOCKING FINGERS AND IS SEATED AT BOTTOM OF TUBE.



STEP 4: POSITION WIRES IN WIRE CHANNELS AND CLOSE INSULATOR TUBE COVER.

NOTE: MAXIMUM WIRE SIZES PER CONNECTOR ARE 3 - #14'S OR 2 - #12'S.



CITY OF CLOVIS

3M DBY WIRE CONNECTOR

DWG NO.

P-11

REF: STD. SPECS
SECTION 21, LANDSCAPE
IRRIGATION SYSTEMS

APPROVED BY:

NO.

REVISED

BY

APPROVALS

SCALE: NTS

CITY ENGINEER

DATE:

01-27-11

BGJ

CM

DRU

PUD

OTHER

OTHER

OTHER

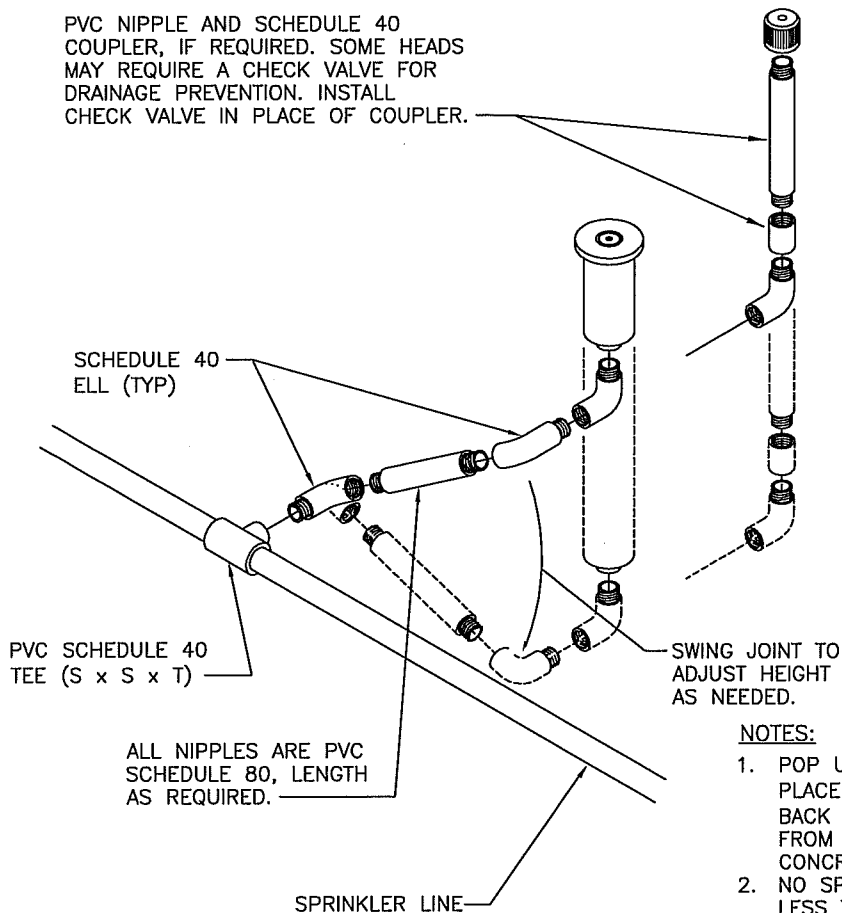
DRAWN BY: JA

SHEET 1 OF 1

SPRINKLER HEAD CLEARANCES

	HEIGHT ABOVE GROUND	CLEARANCE FROM...				
		BACK OF MEDIAN CURBS OR DECORATIVE CONCRETE	SIDEWALK, CURB, OR HEADERS	BUILDINGS	FENCES	HARDSCAPE ETC. IN TURF AREAS
EMITTER	2" ± ½"					
BUBBLER	2" ± ½"					
ROTOR POP-UP	1/2"	12"	2" ± ½"			
12" ROTOR POP-UP	1/2"	6"-12"	2"-6"	12"	6"	
12" POP-UP SPRAY	1/2"	12" ± 1"	6" ± ½"	12" ± 1"	12" ± 1"	
4" POP-UP SPRAY	1/2"	12" ± 1"	2" ± ½"	12" ± 1"	12" ± 1"	2" ± ½"
6" POP-UP SPRAY	1/2"	12" ± 1"	6" ± ½"	12" ± 1"	12" ± 1"	12" ± 1"

PVC NIPPLE AND SCHEDULE 40 COUPLER, IF REQUIRED. SOME HEADS MAY REQUIRE A CHECK VALVE FOR DRAINAGE PREVENTION. INSTALL CHECK VALVE IN PLACE OF COUPLER.



NOTE:
PREFABRICATED SWING JOINTS
ALLOWED PER APPROVAL OF CITY
ENGINEER/PARKS DIVISION

NOTES:

1. POP UP SPRAY HEADS SHALL BE PLACED A MINIMUM OF 1' FROM BACK OF MEDIAN CURB OR 4" FROM BACK OF DECORATIVE CONCRETE.
2. NO SPRAY HEADS IN PLANTERS LESS THAN 8 FEET WIDE.
3. NO SPRAY HEADS CLOSER THAN 24 INCHES TO HARDSCAPE THAT DRAINS OFFSITE



CITY OF CLOVIS

SPRINKLER INSTALLATION

DWG NO.

P-12

REF: STD. SPECS
SECTION 21, LANDSCAPE
IRRIGATION SYSTEMS

APPROVED BY:

CITY ENGINEER

DATE:

NO.

REVISED

BY

APPROVALS

01-27-11

BGJ

CM

DRU

PUD

OTHER

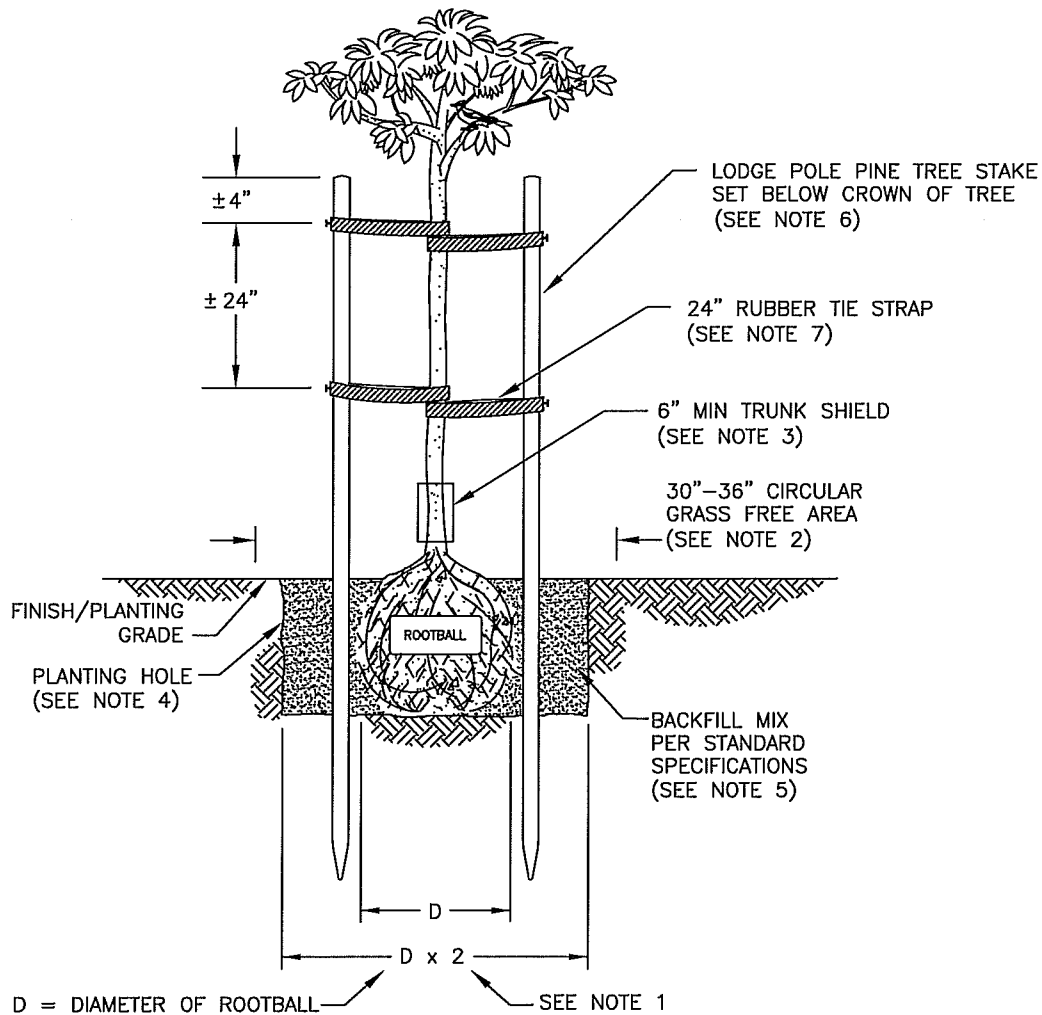
OTHER

OTHER

SCALE: NTS

DRAWN BY: JA

SHEET 1 OF 1



NOTES:

1. DIG PLANTING HOLE TWICE THE DIAMETER OF THE ROOTBALL. IF IMPERVIOUS MATERIAL IS ENCOUNTERED , AUGER 12" DIAMETER DRAINAGE HOLE PER STANDARD SPECIFICATIONS.
2. PROVIDE 30"—36" DIAMETER CIRCULAR GRASS FREE AREA, CENTERED ON TREE.
3. PROVIDE 6" HIGH (MIN) TRUNK SHIELD.
4. SET TREE WITH TOP OF ROOTBALL APPROXIMATELY 1" ABOVE PLANTING GRADE. IF NECESSARY, ADJUST BOTTOM OF HOLE WITH BACKFILL MIX TO RAISE ROOTBALL. SCORE SIDES OF ROOTBALL APPROXIMATELY 1" DEEP TO PREVENT CIRCLING ROOTS.
5. FILL PLANTING HOLE TO PLANTING GRADE WITH BACKFILL MIX AS SPECIFIED, COMPACT LIGHTLY.
6. FOR DECIDUOUS TREES, DRIVE 2 TREE STAKES, 1 SOUTHWEST AND 1 NORTHEAST OF TREE. STAKES SHOULD BE 12" FROM TREE AND SET WITH TOP BELOW CROWN OF TREE. FOR CONIFERS, DRIVE STAKE NORTHWEST OF TREE.
7. SUPPORT TREE USING RUBBER TIE STRAPS NAILED TO TREE STAKES.



CITY OF CLOVIS

TREE PLANTING-TURF AREAS

DWG NO.

P-13

REF:
STD. SPECIFICATIONS
SECTION 20
LANDSCAPE PLANTING

SCALE: NTS

DRAWN BY: JA

SHEET 1 OF 1

APPROVED BY:

CITY ENGINEER

DATE:

NO.

REVISED

BY

APPROVALS

01-19-11

BGJ

CM

DRU

PUD

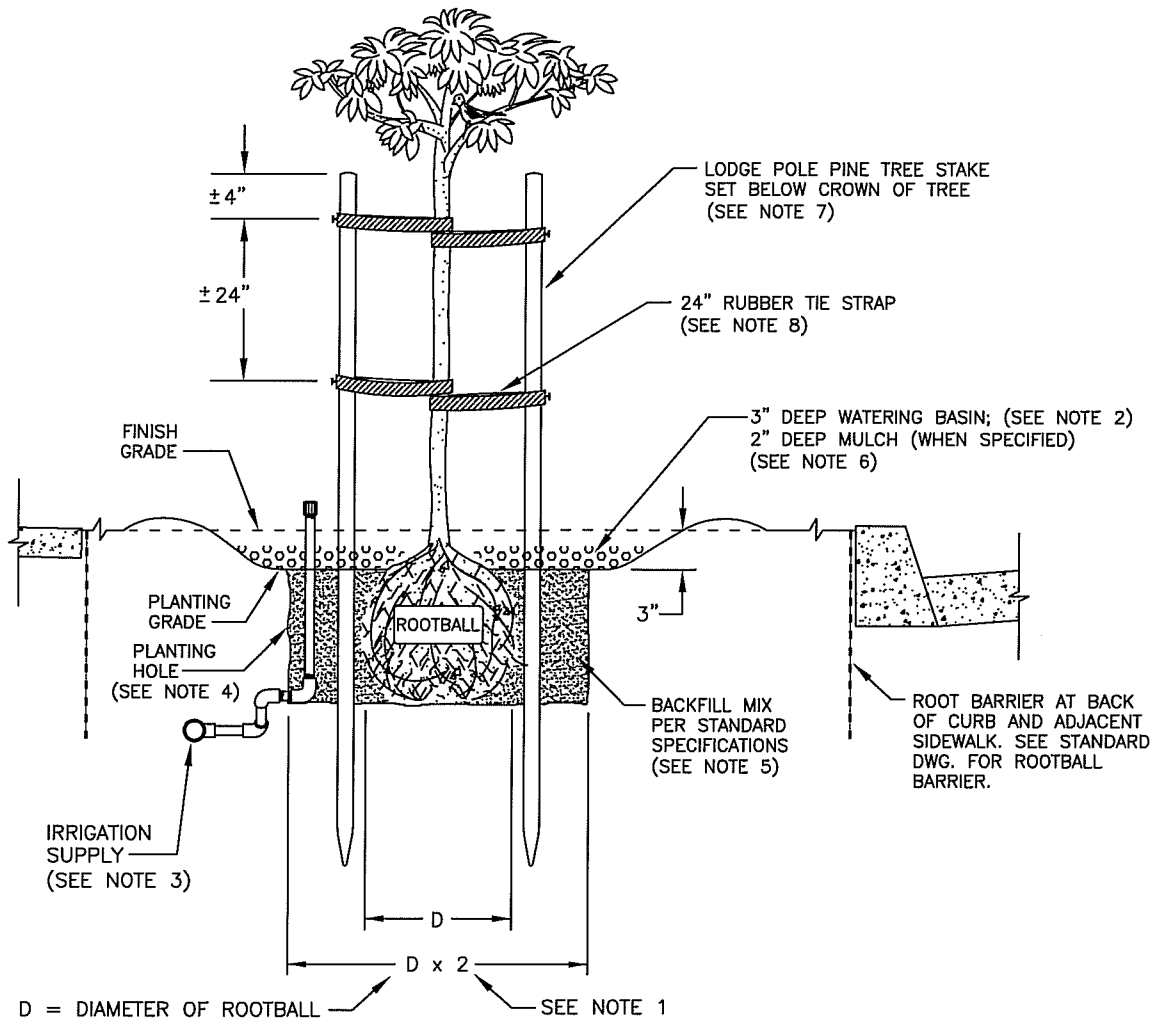
OTHER

OTHER

OTHER

4/29/11

[Signature]



NOTES:

1. DIG PLANTING HOLE TWICE THE DIAMETER OF THE ROOTBALL. IF IMPERVIOUS MATERIAL IS ENCOUNTERED , AUGER 12" DIAMETER DRAINAGE HOLE PER STANDARD SPECIFICATIONS.
2. FORM A 3" DEEP CIRCULAR BASIN AROUND TREE.
3. INSTALL IRRIGATION FACILITIES AS SPECIFIED.
4. SET TREE WITH TOP OF ROOTBALL APPROXIMATELY 1" ABOVE PLANTING GRADE. IF NECESSARY, ADJUST BOTTOM OF HOLE WITH BACKFILL MIX TO RAISE ROOTBALL. SCORE SIDES OF ROOTBALL APPROXIMATELY 1" DEEP TO PREVENT CIRCLING ROOTS.
5. FILL PLANTING HOLE TO PLANTING GRADE WITH BACKFILL MIX AS SPECIFIED, COMPACTING LIGHTLY.
6. COVER WITH 2" OF MULCH WHEN SPECIFIED.
7. FOR DECIDUOUS TREES, DRIVE 2 TREE STAKES, 1 SOUTHWEST AND 1 NORTHEAST OF TREE. STAKES SHOULD BE 12" FROM TREE AND SET WITH TOP BELOW CROWN OF TREE. FOR CONIFERS, DRIVE 1 STAKE NORTHWEST OF TREE.
8. SUPPORT TREE USING RUBBER TIE STRAPS NAILED TO TREE STAKES.



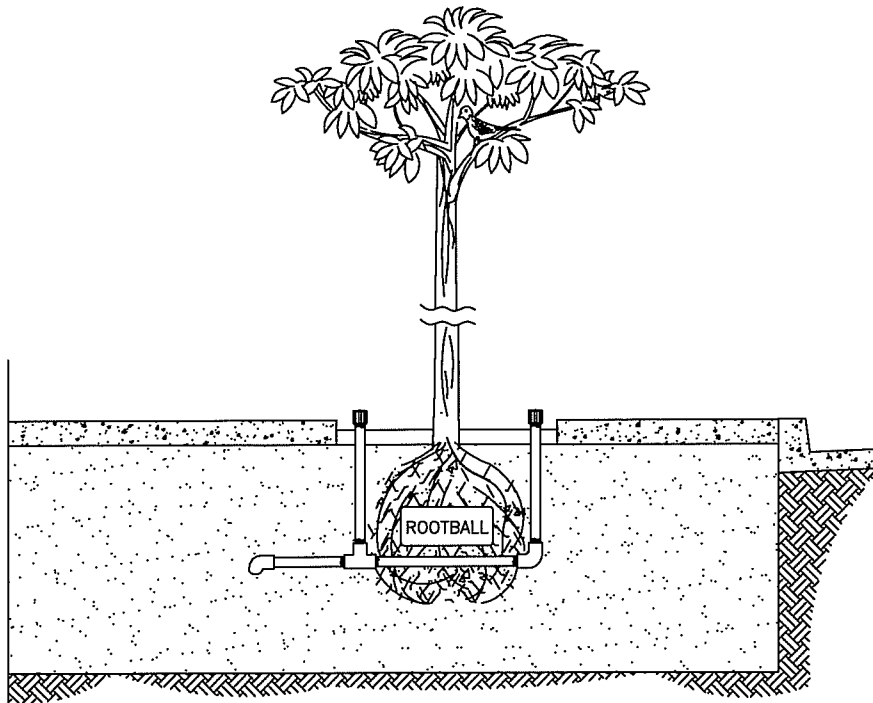
CITY OF CLOVIS

DWG NO.
P-14

TREE PLANTING - NON TURF AREAS WITH ROOT BARRIER

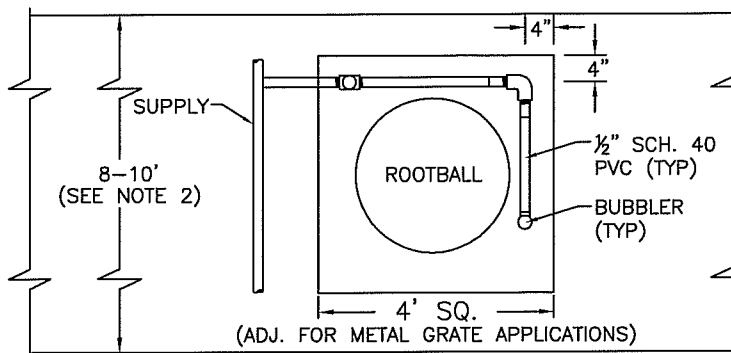
REF:
STD. SPECIFICATIONS
SECTION 20
LANDSCAPE PLANTING

APPROVED BY:	NO.	REVISED	BY	APPROVALS	SCALE: NTS
CITY ENGINEER		01-27-11	BGJ	CM	DRAWN BY: JA
DATE: 9/19/11		06-15-11	BGJ	DRU	
				PUD	SHEET 1 OF 1

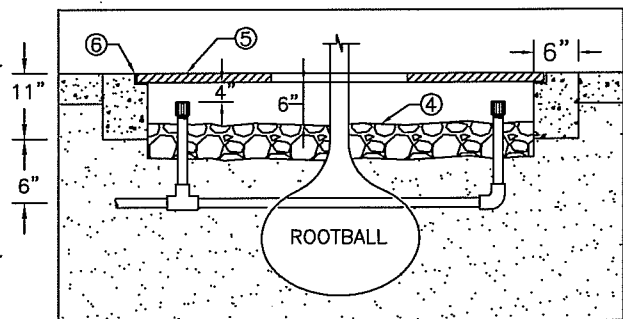


PROFILE VIEW (NTS)

FOR METAL TREE GRATE
APPLICATIONS—SEE DETAIL



PLAN VIEW (NTS)



METAL GRATE DETAIL (NTS)

NOTES:

1. STRUCTURAL SOIL SHALL BE "ROSENBALM ROCKERY'S" OR APPROVED EQUAL.
2. THE ACTUAL LENGTH, WIDTH AND DEPTH OF STRUCTURAL SOIL WILL BE DETERMINED BY THE DESIGN ENGINEER.
3. FOR NON-GRATE APPLICATIONS COVER S. SOIL WITH 3" THICK BARK MULCH.
4. FOR GRATE APPLICATIONS, COVER S. SOIL WITH 3" OF 1" RIVER ROCK.
5. METAL GRATE SHALL BE EAST JORDAN IRON WORKS MODEL V-8954, ADA SQUARE SERIES, 48" SQUARE WITH 16" DIAMETER TREE OPENINGS, 2 PIECE STEEL FRAME, OR APPROVED EQUAL. (800-626-4653, <http://ejw.com>)
6. 1"x6" CLASS 2 CONCRETE FOOTING; NOTCH 1 1/2" SEAT WITH DEPTH TO PROVIDE FLUSH FIT FOR GRATE. INSTALL FOOTING ALL 4 SIDES.



CITY OF CLOVIS

DWG NO.

P-15

SIDEWALK TREE WELL

REF. STANDARD SPEC
SECTION 20
LANDSCAPE PLANTING

APPROVED BY:

CITY ENGINEER

DATE:

NO.

REVISED

BY

APPROVALS

SCALE: NTS

01-27-11

BGJ

CM

OTHER

DRAWN BY: JA

02-16-11

BGJ

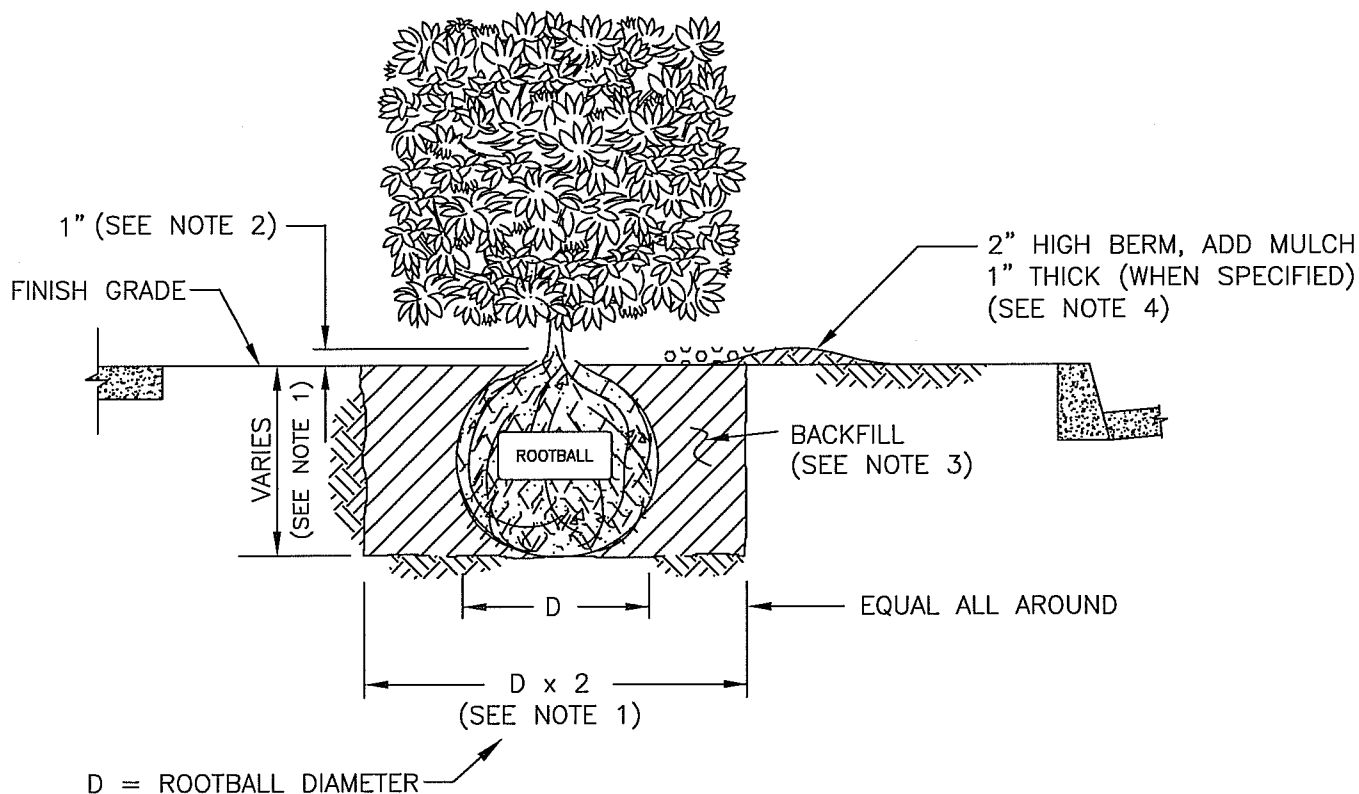
DRU

OTHER

PUD

OTHER

SHEET 1 OF 1



NOTES:

1. DIG PLANTING HOLE TWICE THE DIAMETER OF THE ROOTBALL TO DEPTH EQUAL TO PLANNED DEPTH OF ROOTBALL. IF IMPERVIOUS MATERIAL IS ENCOUNTERED, AUGER 12" DIAMETER DRAINAGE HOLE PER STANDARD SPECIFICATIONS.
2. SET SHRUB WITH TOP OF ROOTBALL APPROXIMATELY 1" ABOVE FINISH GRADE. IF NECESSARY, ADJUST BOTTOM OF HOLE WITH BACKFILL TO RAISE ROOTBALL. CUT SIDES ROOTBALL TO MIDDLE OF ROOTBALL AT 3 EQUIVALENT LOCATIONS TO PREVENT CIRCLING ROOTS.
3. BACKFILL HOLE TO FINISH GRADE WITH NATIVE SOIL REMOVED FROM PLANTING HOLE; REMOVE ROCKS, HARDPAN, DELETERIOUS MATERIAL. COMPACT LIGHTLY.
4. WHEN SPECIFIED, COVER WITH 1" THICK MULCH LAYER; KEEP CLEAR OF TRUNK BASE; FORM A BERMED 2" DEEP CIRCULAR BASIN AROUND SHRUB.



CITY OF CLOVIS

SHRUB PLANTING

DWG NO.
P-16

REF. STANDARD SPEC
SECTION 20
LANDSCAPE PLANTING

APPROVED BY:

CITY ENGINEER

DATE:

NO.

REVISED

BY

APPROVALS

01-19-11

BGJ

CM

DRU

PUD

OTHER

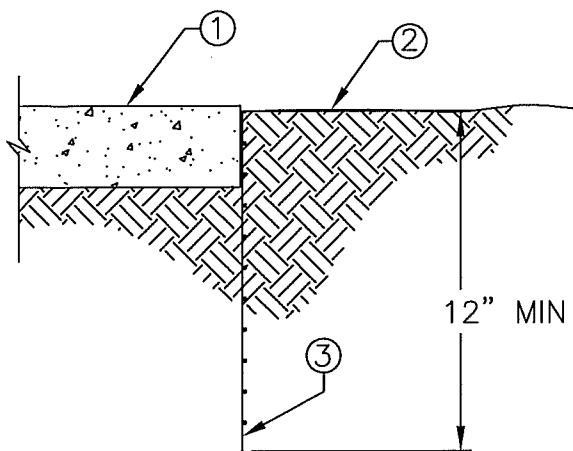
OTHER

OTHER

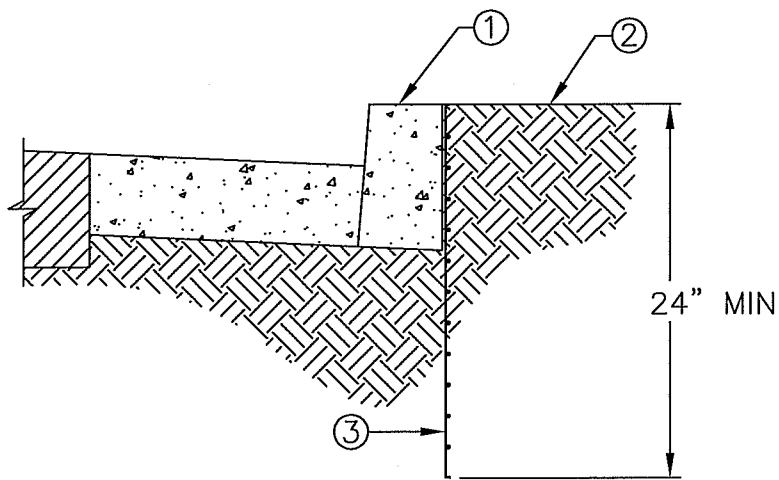
SCALE: NTS

DRAWN BY: JA

SHEET 1 OF 1



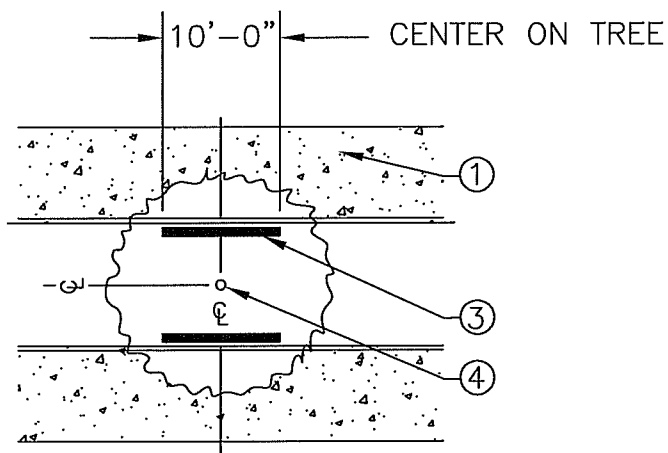
SIDEWALK
APPLICATION



CURB OR CURB
AND GUTTER
APPLICATION

NOTES:

- ① PROPOSED OR EXISTING CONCRETE CURB OR WALK, (TYP.)
- ② FINISHED GRADE OF PLANTING AREA
- ③ INSTALL 12" OR 24" (AS SHOWN) DEEP ROOT CONTROL BARRIER, CENTER BARRIER ON TREE
- ④ PROPOSED TREE.



CITY OF CLOVIS

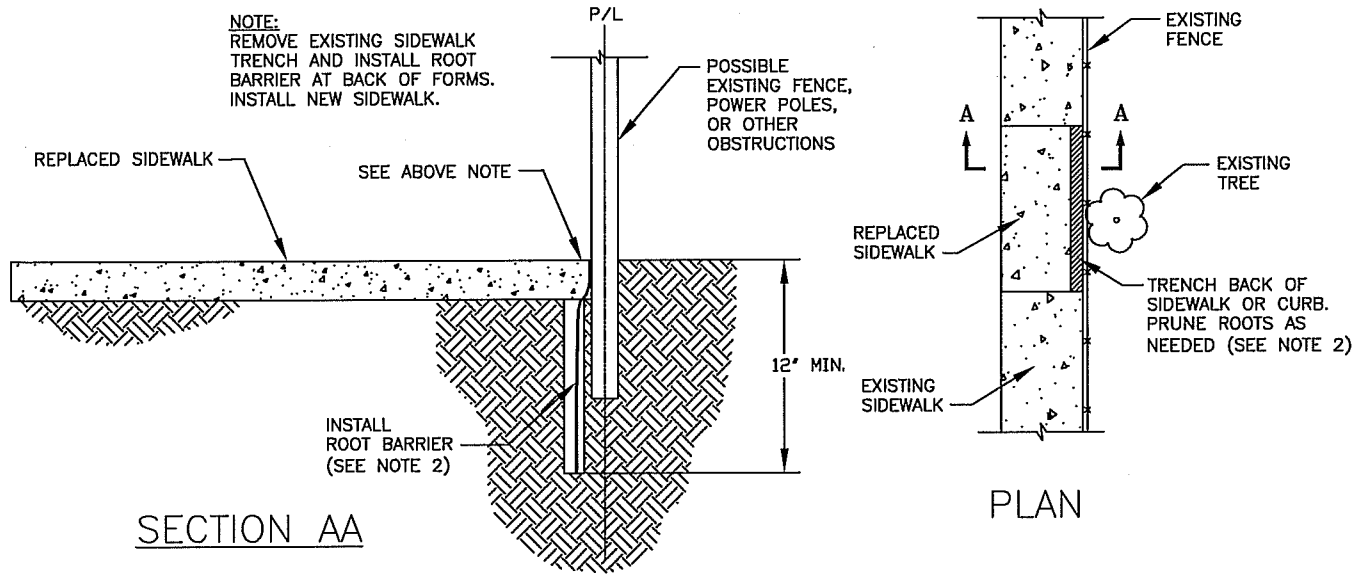
ROOT BARRIER, NEW TREE PLANTING

DWG NO.
P-17

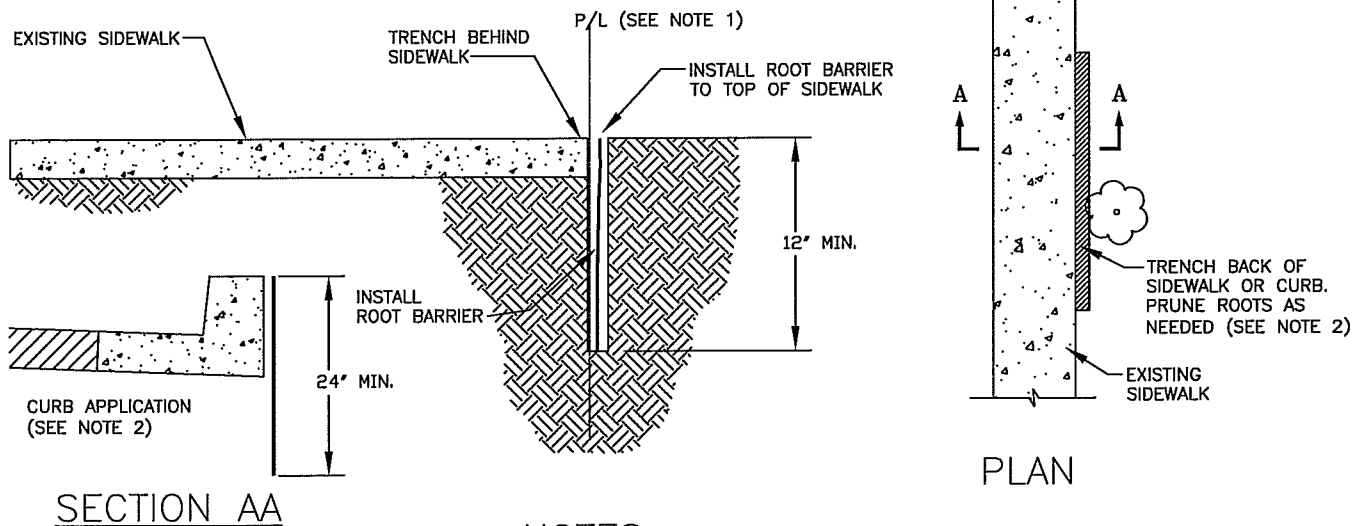
REF. STANDARD SPEC
SECTION 20
LANDSCAPE PLANTING

APPROVED BY:	NO.	REVISED	BY	APPROVALS	SCALE: NTS
CITY ENGINEER		01-19-11	BGJ	CM DRU PUD	DRAWN BY: JA
DATE: 4/29/11				OTHER OTHER OTHER	SHEET 1 OF 1

AREAS WHERE SIDEWALK OR CURB IS BEING REPLACED



AREAS WHERE SIDEWALK IS TO REMAIN



NOTE:

CURB TO BE APPROVED ROOT CONTROL BARRIER INSTALLED PER MANUFACTURER'S SPECIFICATIONS.

NOTES:

1. IF ADJACENT PROPERTY IS PRIVATE, A CONSTRUCTION EASEMENT OR RIGHT OF ENTRY IS REQUIRED.
2. LENGTH AND PLACEMENT LOCATION OF BARRIER IS DEPENDENT ON EXTENT OF ROOT INTRUSION. TO BE DETERMINED BY THE ENGINEER.



CITY OF CLOVIS

ROOT BARRIER, SIDEWALK REPLACEMENT/PROTECTION, EXISTING TREE

DWG NO.

P-18

REF. STANDARD SPEC
SECTION 20
LANDSCAPE PLANTING

SCALE: NTS

DRAWN BY: JA

SHEET 1 OF 1

APPROVED BY:

CITY ENGINEER

DATE:

NO.

REVISED

BY

APPROVALS

01-27-11

BGJ

CM

DRU

PUD

OTHER

OTHER

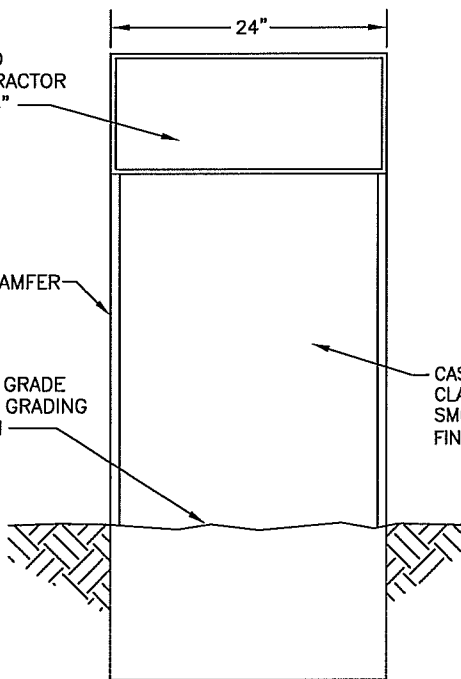
OTHER

[Signature]
4/29/11

DEDICATION
PLAQUE
PROVIDED
BY CITY,
INSTALLED
BY CONTRACTOR
18" X 24"

3/4" CHAMFER

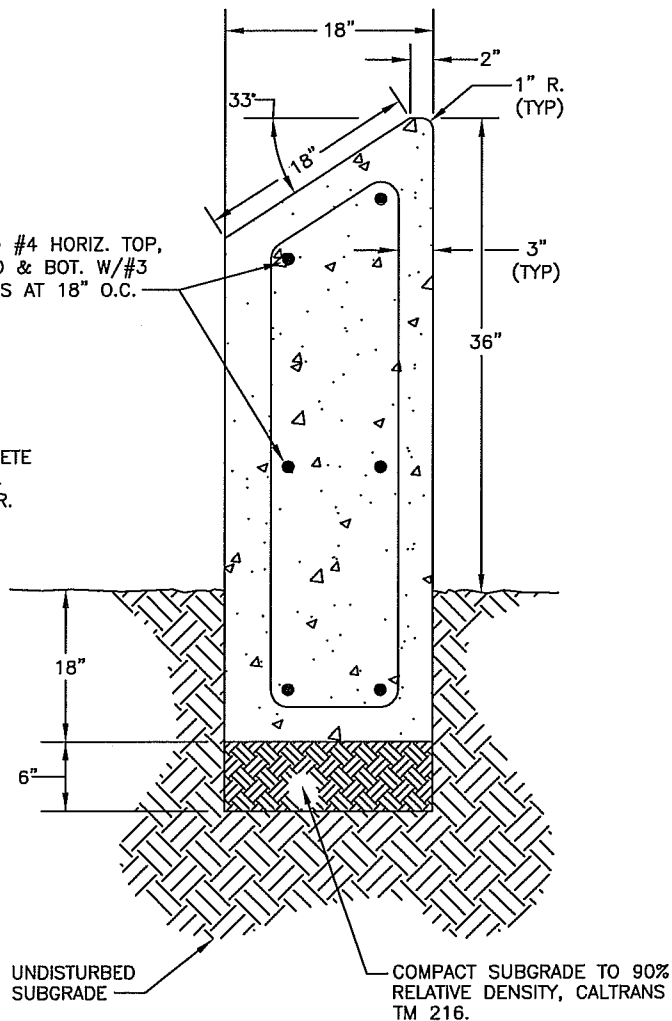
FIN. GRADE
PER GRADING
PLAN



ELEVATION

CAST-IN-PLACE
CLASS 2 CONCRETE
SMOOTH TROWEL
FINISH W/SEALER.

(2) #4 HORIZ. TOP,
MID & BOT. W/#3
TIES AT 18" O.C.



SECTION



CITY OF CLOVIS

DEDICATION PLAQUE & PEDESTAL

DWG NO.

P-19

REF.: STD. SPECIFICATIONS
SECTION 83 LIGHTING
SYSTEMS

APPROVED BY:

CITY ENGINEER

DATE:

NO.

REVISED

BY

APPROVALS

01-25-11

BGJ

CM

DRU

PUD

OTHER

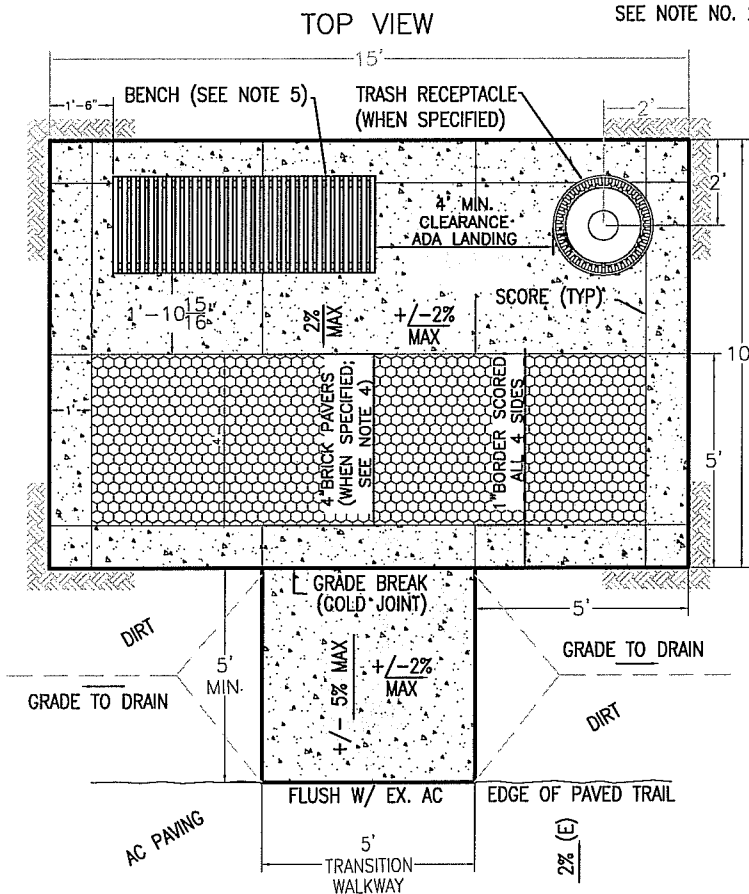
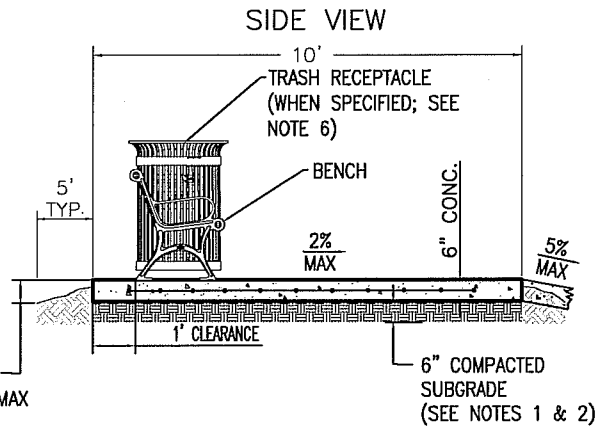
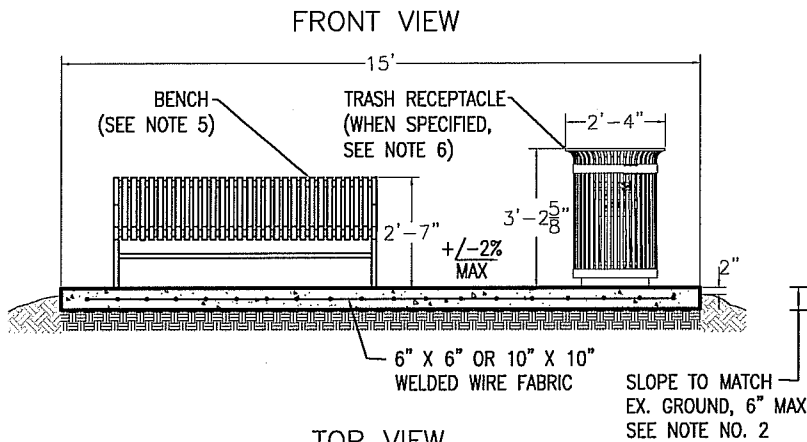
OTHER

OTHER

SCALE: NTS

DRAWN BY: JA

SHEET 1 OF 1



NOTES:

1. CONST. EMBANKMENT W/MAX 10% SLOPE AWAY FROM SLAB.
2. COMPACT SUBGRADE TO 90% REL. COMPACTION PER CALTRANS T.M. 216.
3. CONCRETE SHALL BE CLASS 2, MEDIUM SWEAT FINISH. APPLY 1/8" WIDE X 1/2" DEEP SCORE LINES AS SHOWN.
4. WHEN SPECIFIED TO BE INSTALLED IN LIEU OF COMPLETE CONC. SLABS, BRICK PAVERS SHALL BE UNI-DECOR OR APPROVED EQUAL W/ BASKET WEAVE PATTERN.
5. BENCH SHALL BE 6-FT., VICTOR STANLEY, INC., CLASSIC SERIES CR-96, OR APPROVED EQUAL, MOUNTED TO SLAB PERMANENTLY USING METHODS APPROVED BY THE MANUFACTURER OR THE ENGINEER.
6. WHEN SPECIFIED TO BE INSTALLED, 36-GAL. TRASH RECEPTACLE SHALL BE VICTOR STANLEY, INC. IRONSITES SERIES S-42 OR APPROVED EQUAL. RECEPTACLE TO BE PERMANENTLY AFFIXED TO CONC. SLAB IN AN APPROVED MANNER.



CITY OF CLOVIS

TRAIL REST STOP

DWG NO.

P-20

REF.: STANDARD SPEC. SECTIONS 19, 73, & 90

SCALE: NTS

DRAWN BY: JA

SHEET 1 OF 1

APPROVED BY:

CITY ENGINEER

DATE:

NO.

REVISED

BY

APPROVALS

01-21-11

BGJ

CM

DRU

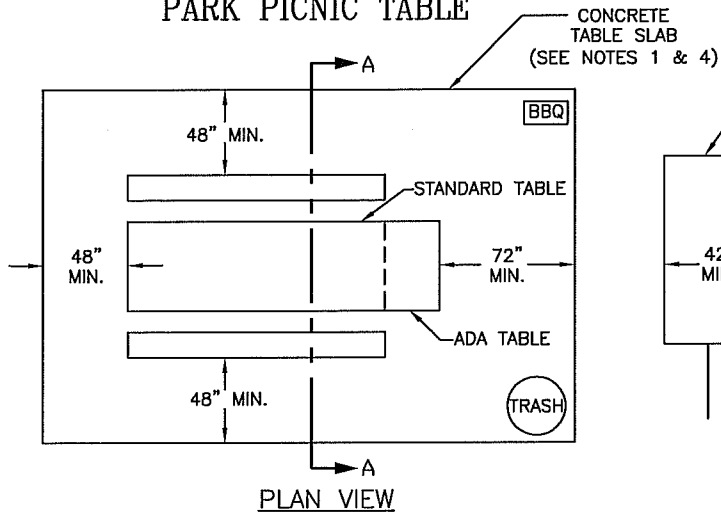
PUD

OTHER

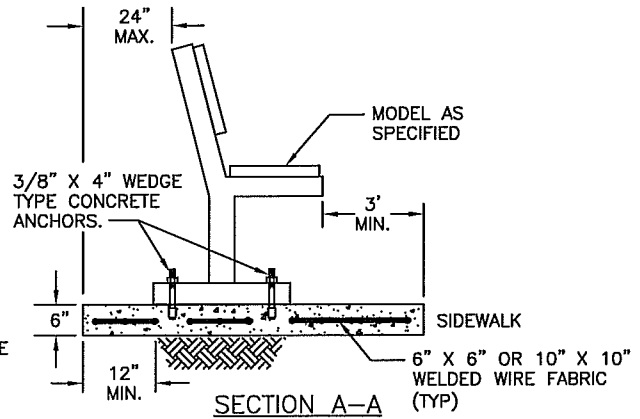
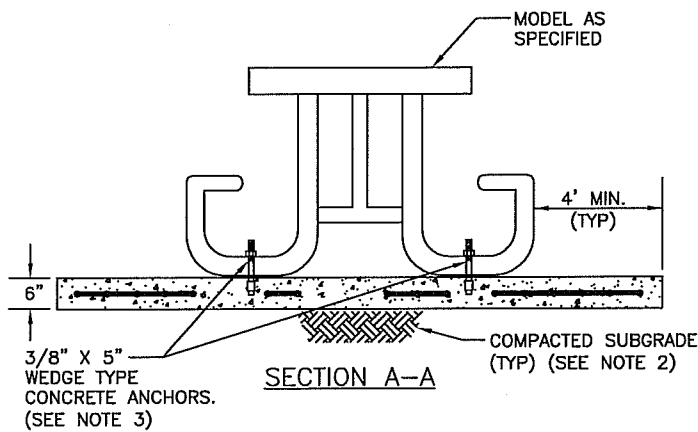
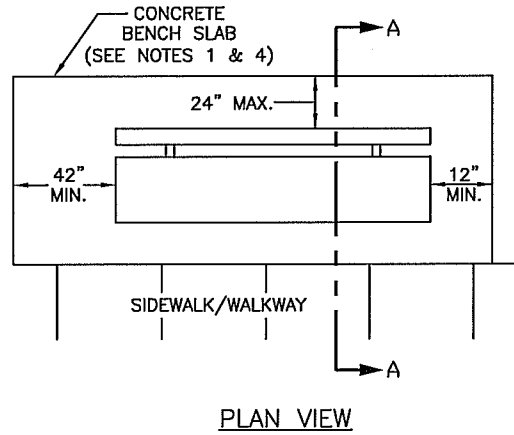
OTHER

OTHER

PARK PICNIC TABLE



PARK BENCH



NOTES:

1. CONCRETE SLABS TO BE CLASS 2, MEDIUM SWEAT FINISH.
2. COMPACT SUBGRADE TO 90% REL. COMPACTION PER CALTRANS T.M. 216.
3. ANCHORS MAY VARY ACCORDING TO BENCH AND TABLE MODELS.
4. OVERALL EXTERIOR DIMENSIONS OF SLABS WILL VARY AT EACH INSTALLATION.



CITY OF CLOVIS

PICNIC TABLE AND BENCH SLABS

DWG NO.

P-21

REF. STANDARD SPEC
SECTION 20
LANDSCAPE PLANTING

SCALE: NTS

DRAWN BY: JA

SHEET 1 OF 1

APPROVED BY:

CITY ENGINEER

DATE:

NO.

REVISED

BY

APPROVALS

01-19-11

BGJ

CM

DRU

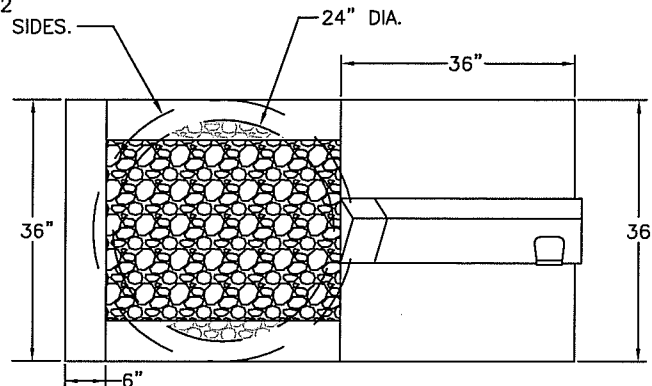
PUD

OTHER

OTHER

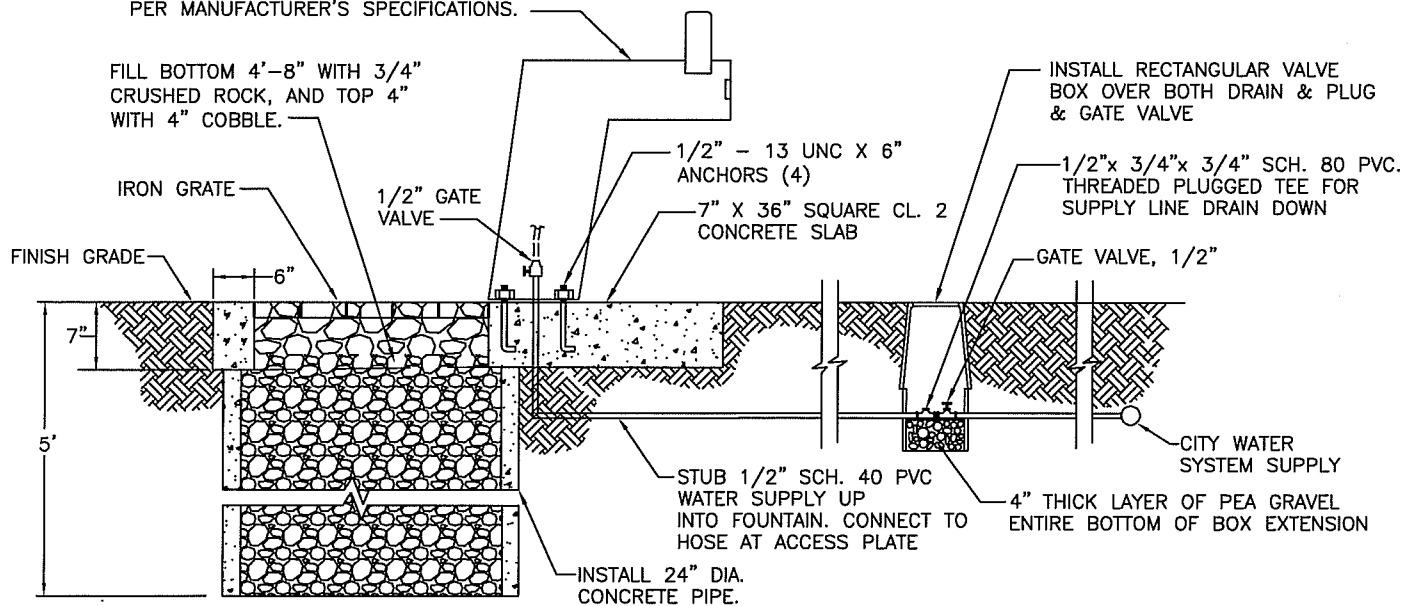
OTHER

6" X 7" DEEP CL. 2
CONCRETE CURB, 3 SIDES.



PLAN VIEW

INSTALL HAWS MODEL 3202
OR APPROVED EQUAL DRINKING FOUNTAIN
PER MANUFACTURER'S SPECIFICATIONS.



ELEVATION



CITY OF CLOVIS

DRINKING FOUNTAIN

DWG NO.

P-22

REF: STD. SPECS
N/A

APPROVED BY:

CITY ENGINEER

DATE:

NO.

REVISED

BY

APPROVALS

SCALE: NTS

01-24-11

BGJ

CM

OTHER

DRAWN BY: JA

06-15-11

BGJ

DRU

OTHER

PUD

OTHER

SHEET 1 OF 1

LIGHT TO BE:
25-45 WATT FLORESCENT
OR LED.

1. THE PHOTO CELL IS TO BE INSTALLED WITHIN THE ELECTRICAL SERVICE PANEL BOX UNDER A LEXAN WINDOW.
2. TIMERS TO BE INSTALLED INSIDE ELECTRICAL SERVICE PANEL.
3. FOR EACH LIGHTING SYSTEM INSTALL A PHOTO CELL OVERRIDE SWITCH FOR TESTING OF LIGHTS.

CONCRETE EXTENDED
4" ABOVE PAD.
BROOM FINISH. —

12"

— SIDEWALK/LAWN

— PLACE CLASS 2 CONCRETE
BORDER ALL AROUND PULL BOX
WHERE NO SIDEWALK.

- PULL BOX & FUSE
(SECURED)

- GROUND ROD

- ANCHOR BOLTS PER
MANUFACTURERS
RECOMMENDATIONS.

* DIMENSIONS ARE GENERAL AND MAY CHANGE PER MANUFACTURER'S RECOMMENDATIONS, PLANS OR SPECS.



PARK SECURITY LIGHT

P-23

SHEET 1 OF 1

R
9/29/11