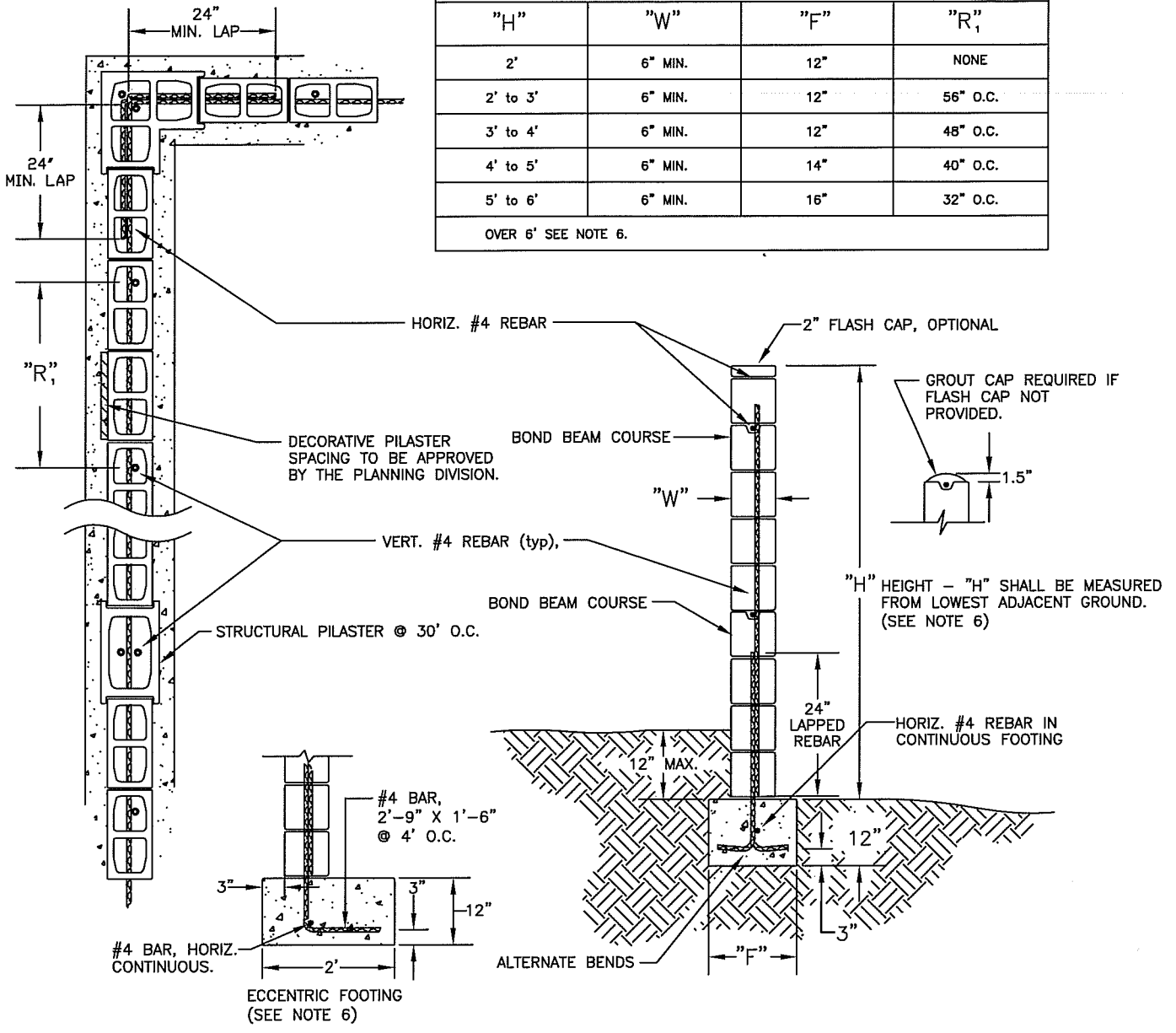



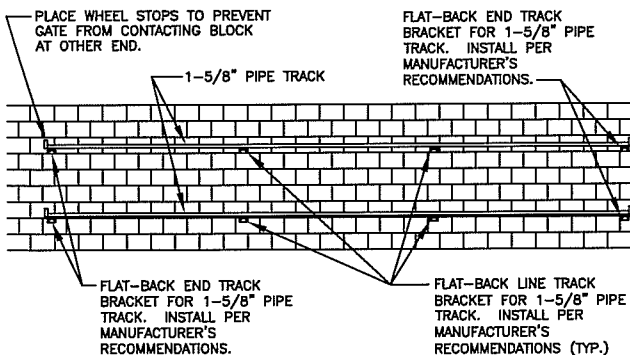
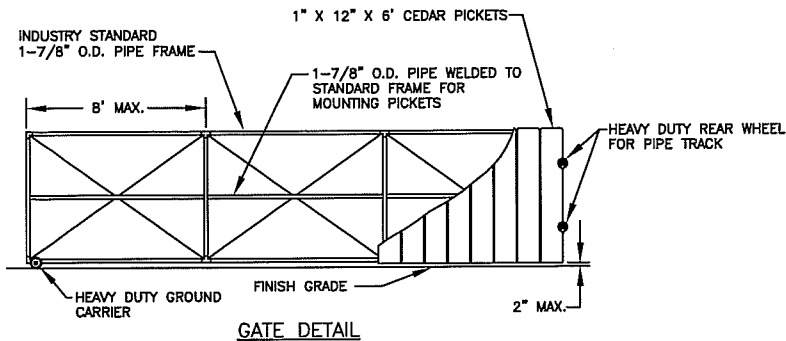
"H"	"W"	"F"	"R <sub>1</sub> "
2'	6" MIN.	12"	NONE
2' to 3'	6" MIN.	12"	56" O.C.
3' to 4'	6" MIN.	12"	48" O.C.
4' to 5'	6" MIN.	14"	40" O.C.
5' to 6'	6" MIN.	16"	32" O.C.
OVER 6' SEE NOTE 6.			



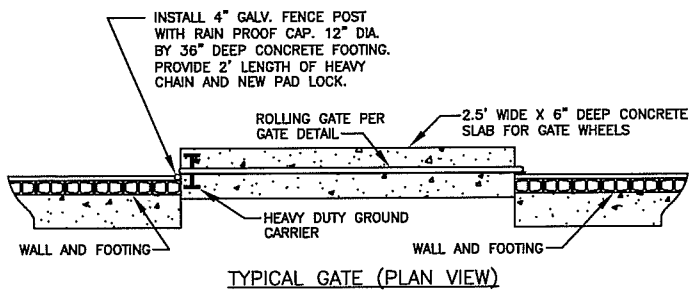
**NOTES:**

1. ALL BLOCK WALLS (FENCES) REQUIRE A CITY OF CLOVIS BUILDING PERMIT.
2. SOIL UNDER FOOTING TO BE COMPACTED TO 90% RELATIVE COMPACTION. PROVIDE COMPACTION REPORT TO BUILDING DIVISION.
3. FOOTING SHALL BE 2500 PSI @ 28 DAYS CONCRETE. FOOTINGS SHALL NOT ENCROACH ONTO ADJACENT PROPERTY. ECCENTRIC FOOTINGS (L-TYPE) MAY BE USED TO OFFSET WALL AT P/L.
4. CONCRETE BLOCK SHALL BE 2000 PSI WITH TYPE AND COLOR APPROVED BY THE PLANNING DIVISION.
5. ALL WALLS TO BE PLUMB WITH ALL BLOCK COURSES LAID LEVEL. ALL CELLS TO BE FILLED WITH 2000 PSI @ 28 DAYS GROUT.
6. THE ECCENTRIC FOOTING SHOWN HAS "NO LESS THAN" DIMENSIONS AND SIZES. ACTUAL ECCENTRIC FOOTINGS, ALL WALLS OVER 6' HIGH, AND ALL ALTERNATIVE WALLS TENTATIVELY APPROVED BY THE CITY SHALL BE DESIGNED BY A REGISTERED CIVIL ENGINEER AND SHALL BE FINALLY APPROVED BY THE CITY ENGINEER.

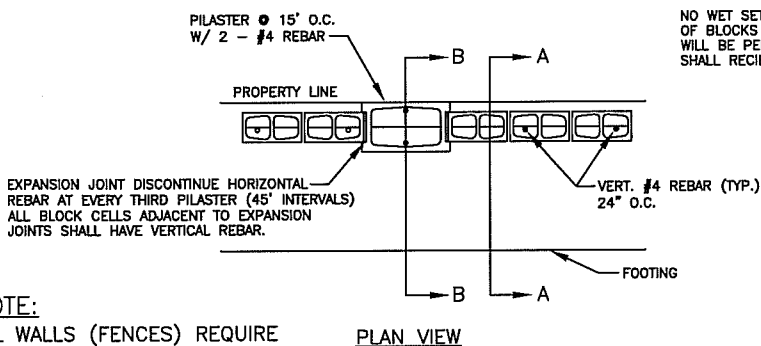
	<b>CITY OF CLOVIS</b>				DWG NO.
	<b>CONCRETE MASONRY FENCE</b>				<b>M-1</b>
APPROVED BY:	NO.	REVISED	BY	APPROVALS	REF. STD. SPECIFICATIONS SECTION 81
CITY ENGINEER		03-16-09	BGJ	CM	SCALE: NTS
DATE: 7/29/11		01-18-11	BGJ	DRU	DRAWN BY: JA
		02-15-11	BGJ	PUD	SHEET 1 OF 1



**ROLLER TRACK INSTALLATION DETAIL**

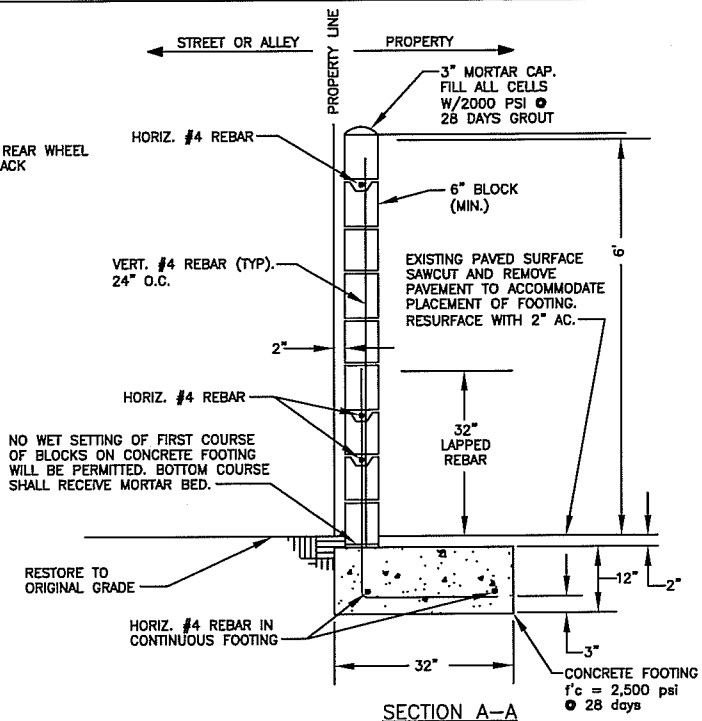


**TYPICAL GATE (PLAN VIEW)**

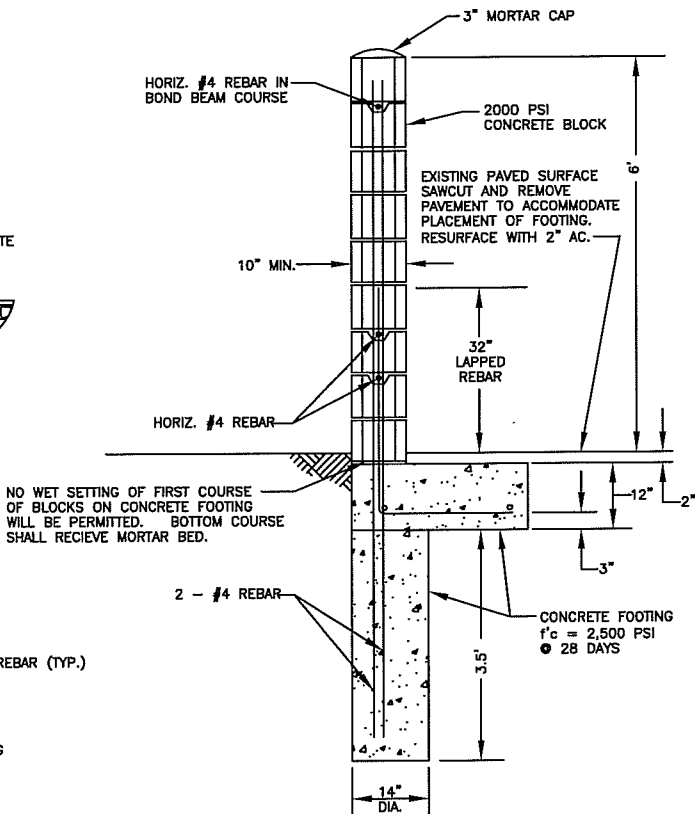


**PLAN VIEW**

**NOTE:**  
ALL WALLS (FENCES) REQUIRE CITY BUILDING PERMIT.



**SECTION A-A**



**SECTION B-B**

NO WET SETTING OF FIRST COURSE OF BLOCKS ON CONCRETE FOOTING WILL BE PERMITTED. BOTTOM COURSE SHALL RECEIVE MORTAR BED.

# CITY OF CLOVIS

DWG NO. **M-1A**

## BLOCK FENCE W/ ROLLING GATE

REF. STD. SPECIFICATIONS SECTION 81 & STD. DRAWING M-1

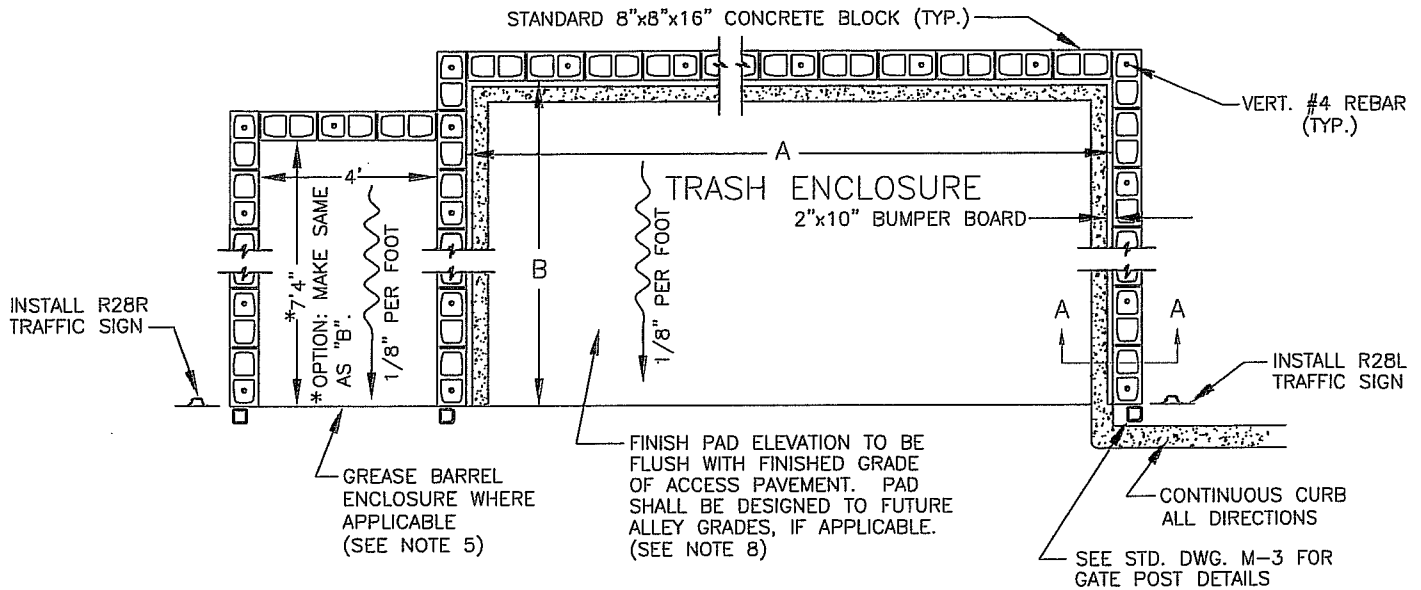


APPROVED BY:  
  
CITY ENGINEER  
DATE: *1/29/11*

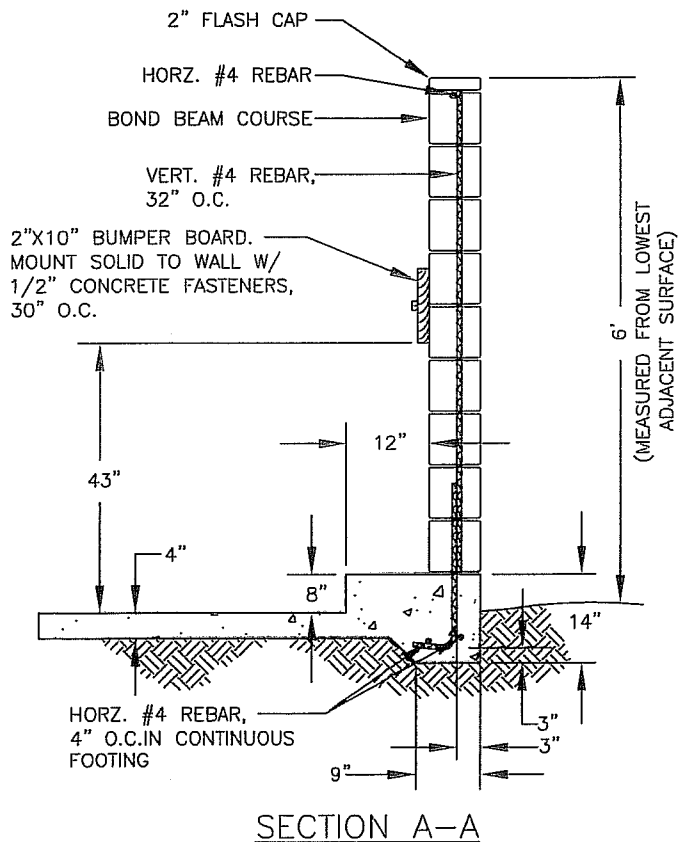
NO.	REVISED	BY
	03-17-09	BGJ
	01-18-11	BGJ
	02-15-11	BGJ

APPROVALS  
CM  
DRU *[Signature]*  
PUD *[Signature]*

SCALE: NTS  
DRAWN BY: JA  
SHEET 1 OF 1



INSIDE-WALL ENCLOSURE DIMENSIONS		
	A	B
TYPE I	10'8"	10'4"
TYPE II	14'8"	10'4"
TYPE III	18'8"	10'4"
TYPE IV	14'8"	15'4"
TYPE V	18'8"	15'4"



**NOTES:**

1. ALL ENCLOSURES TO BE CONSTRUCTED USING 8"x8"x16" 2000 PSI CONCRETE BLOCK TO MATCH BUILDING FEATURES. CITY BUILDING PERMIT REQUIRED FOR ENCLOSURE.
2. ALL CELLS SHALL BE GROUTED SOLID W/ 2000 PSI @ 28 DAYS GROUT.
3. CONCRETE PAD FORMS SHALL BE INSPECTED BY THE CITY BUILDING DIVISION PRIOR TO POUR.
4. CONCRETE PAD SHALL BE CONSTRUCTED ON MIN. 6" OF UNDISTURBED SOIL, SAND BEDDING OR 90% C.N.S.
5. GREASE BARREL ENCLOSURES ARE REQUIRED FOR ALL RESTAURANTS AND FOOD SERVICE ESTABLISHMENTS.
6. SEE STD. DWG. M-3B FOR GATE DETAILS.
7. ACCESS TO ENCLOSURE SHALL BE PAVED AND CLEAR OF SPEED BUMPS OR OTHER OBSTRUCTIONS.
8. FOOTINGS AND FLOOR SHALL BE CONCRETE, 2500 PSI @ 28 DAYS, INCLUDING GATE POST FOOTINGS.



# CITY OF CLOVIS

## TRASH BIN ENCLOSURE

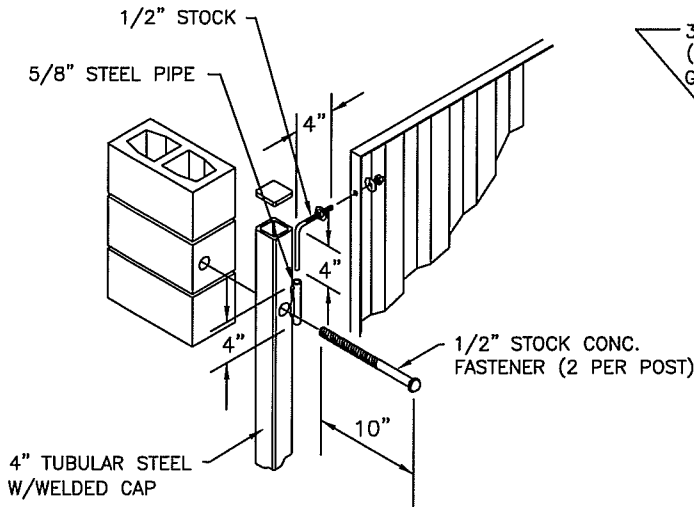
DWG NO. **M-2**

REF. STD. SPECIFICATIONS

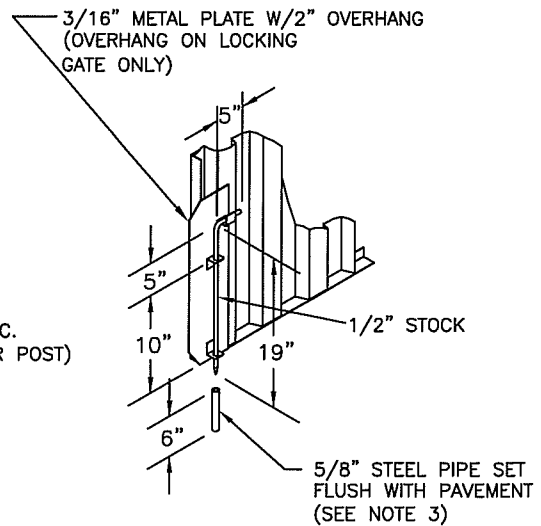
APPROVED BY:  
CITY ENGINEER  
DATE: *2/1/12*

NO.	REVISED	BY	APPROVALS
	12-29-11	BGJ	CM
	1-18-12	BGJ	DRU PUD

SCALE: NTS  
DRAWN BY: JA  
SHEET 1 OF 1

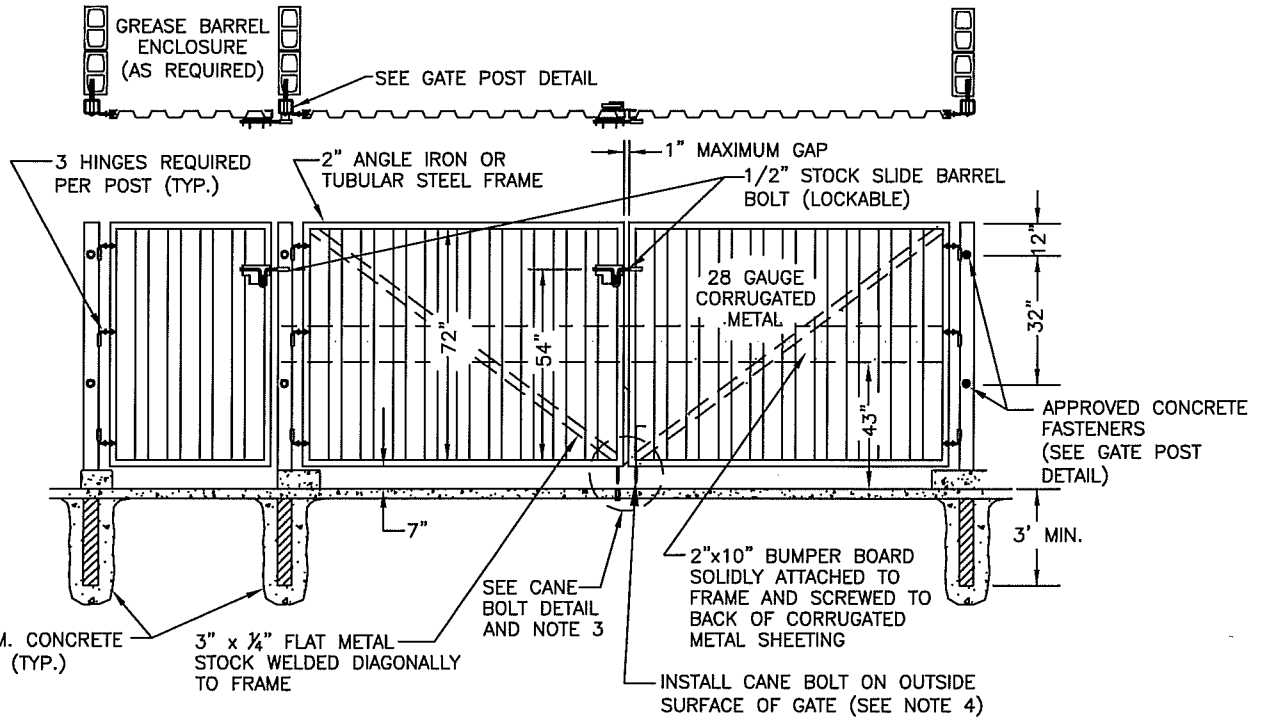


GATE POST DETAIL




CANE BOLT DETAIL

SEE NOTE 4 FOR LOCATIONS OF CANE BOLTS. (INSIDE OR OUTSIDE SURFACES OF GATES)



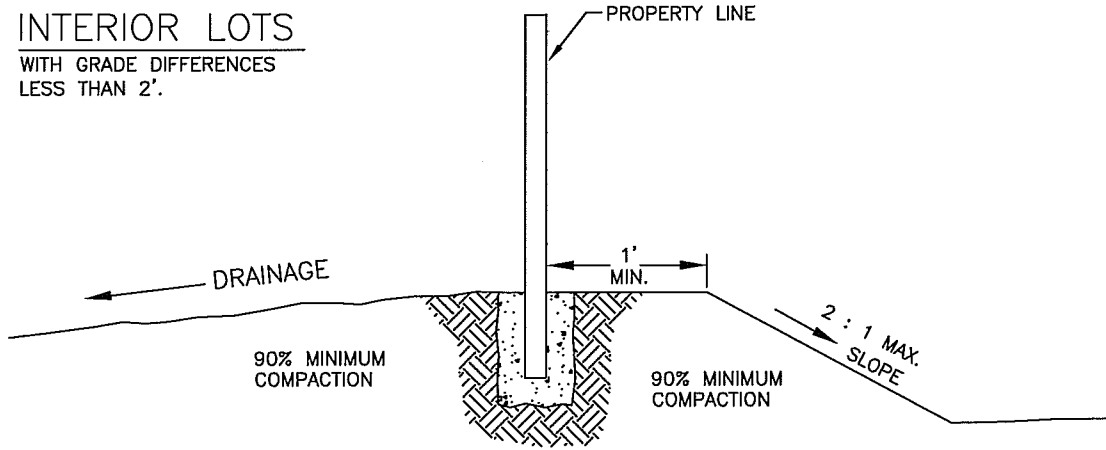
**NOTES:**

1. GATES TO BE PAINTED TO MATCH BUILDING ACCENT FEATURES.
2. DESIGN, ENGINEERING AND CONSTRUCTION NOT SPECIFICALLY NOTED SHALL BE IN ACCORDANCE WITH ACCEPTED INDUSTRY STANDARDS AND OF FIRST QUALITY.
3. SECONDARY CANE BOLT RETAINER TO BE PLACED FOR EACH GATE SUCH THAT GATE IS HELD IN A POSITION 90 DEGREES TO THE CLOSED POSITION.
4. INSTALL CANE BOLT ON OUTSIDE SURFACE OF NON-LOCKING GATE (GATE WITHOUT SLIDE BARREL BOLT).

	CITY OF CLOVIS				DWG NO. <b>M-3</b>
	TRASH ENCLOSURE GATE DETAILS				
APPROVED BY:	NO.	REVISED	BY	APPROVALS	SCALE: NTS
CITY ENGINEER DATE: 1/3/12				CM DRU <i>[Signature]</i> PUD <i>[Signature]</i>	DRAWN BY: JA SHEET 1 OF 1

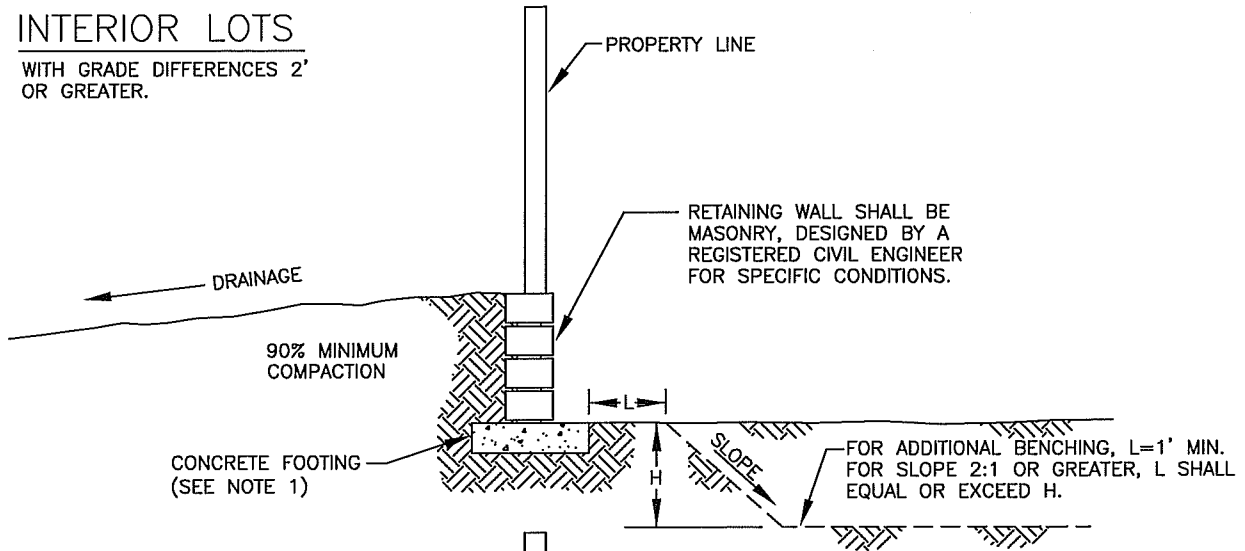
**A. INTERIOR LOTS**

WITH GRADE DIFFERENCES  
LESS THAN 2'.



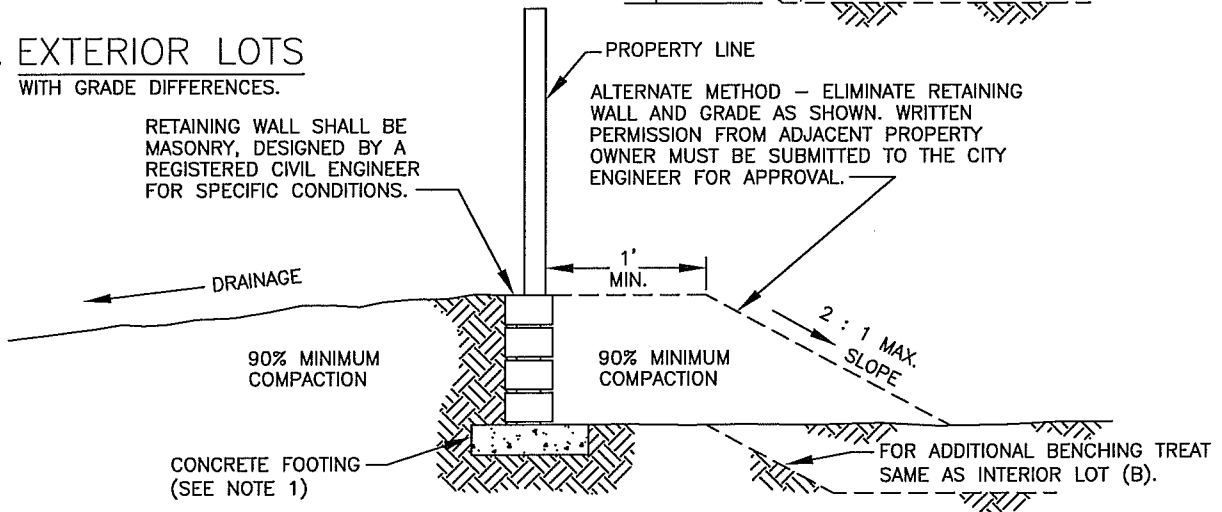
**B. INTERIOR LOTS**

WITH GRADE DIFFERENCES 2'  
OR GREATER.



**C. EXTERIOR LOTS**

WITH GRADE DIFFERENCES.



**NOTES:**

1. ALL CONCRETE FOOTINGS SHALL BE 2500 PSI @ 28 DAYS.
2. RETAINING WALL REQUIRES CITY BUILDING PERMIT, & MEET REQUIREMENTS OF STD. DRAWING M-1.

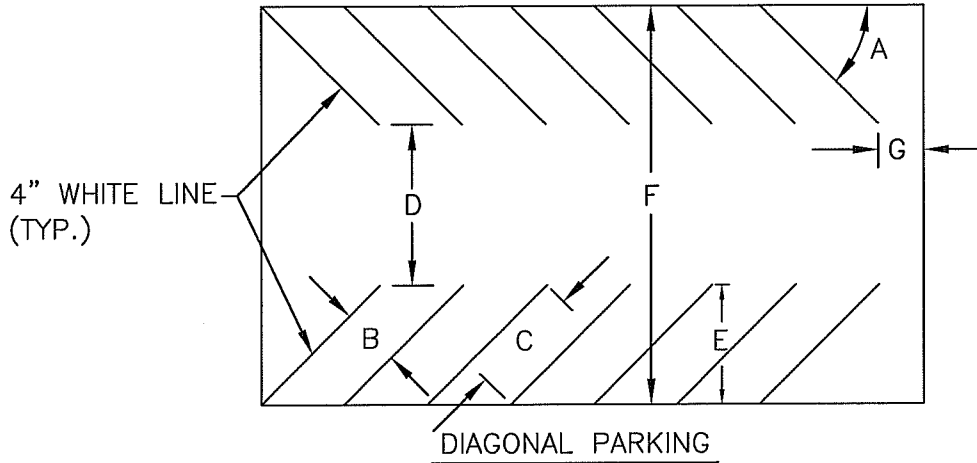
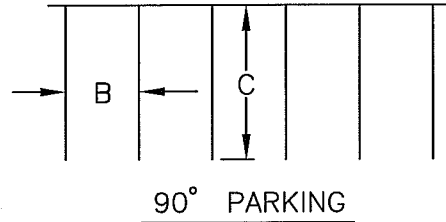
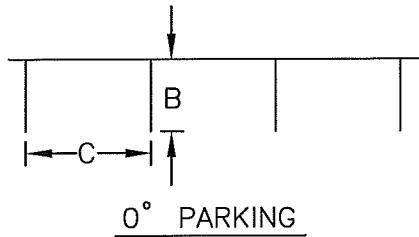


**CITY OF CLOVIS**  
**LOT LINE GRADING STANDARD**

DWG NO.  
**M-4**

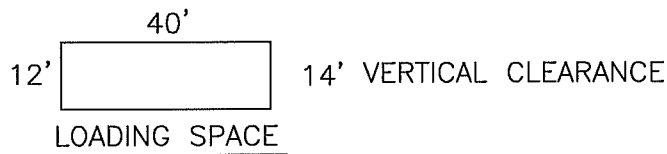
REF.: STD. SPECIFICATIONS  
SECTION 19 & 81, & STD.  
DRAWING M-1

APPROVED BY:	NO.	REVISED	BY	APPROVALS	SCALE: NTS
CITY ENGINEER		03-18-09	BGJ	CM	DRAWN BY: JA
		01-18-11	BGJ	DRU PUD	
DATE: 4/19/11					SHEET 1 OF 1



A	B	C	D	E	F	G
0°	8'6"	22'	15'	-	32'	0'
45°	9'6"	20'	14'	21'	56'	5'
60°	9'6"	20'	17'	22'	61'	5'
90°	10'0"	20'	26'	-	66'	0'

A—PARKING ANGLE  
 B—STALL WIDTH  
 C—STALL LENGTH  
 D—AISLE WIDTH  
 E—STALL TO CURB  
 F—CURB TO CURB  
 G—PROPERTY LINE TO STALL



**NOTE:**

THIS DRAWING CONTAINS NO PROVISIONS FOR DISABLED PARKING. THE DESIGNER SHALL INCORPORATE SUCH PROVISIONS COMPLYING WITH FEDERAL AND STATE STANDARDS.



# CITY OF CLOVIS

## PARKING LOT STANDARDS

DWG NO.  
**M-6**

REF. STD. SPECIFICATIONS SECTION 84

SCALE: NTS

DRAWN BY: JA

SHEET 1 OF 1

APPROVED BY:

CITY ENGINEER

DATE:

*[Handwritten signature]*

NO.

REVISED

BY

APPROVALS

07-17-09

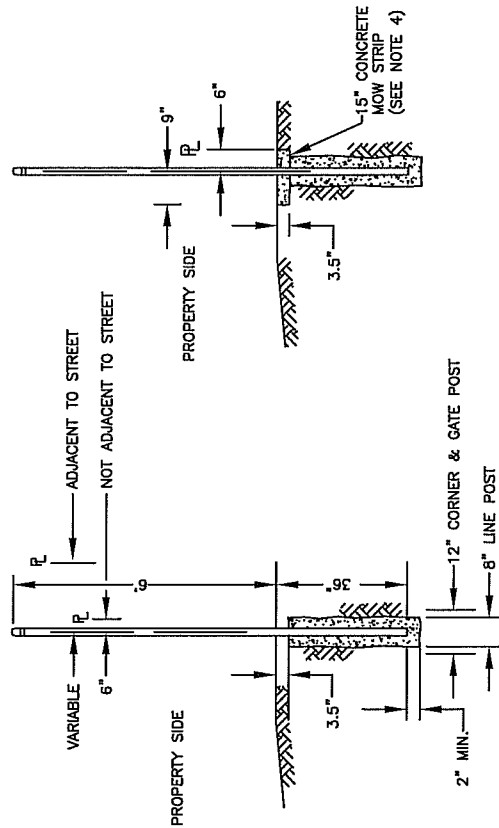
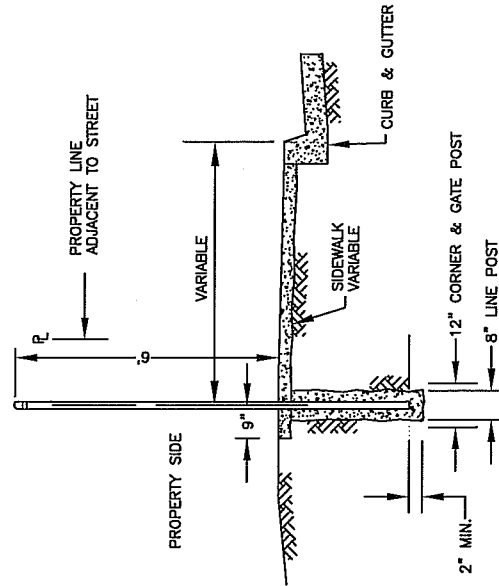
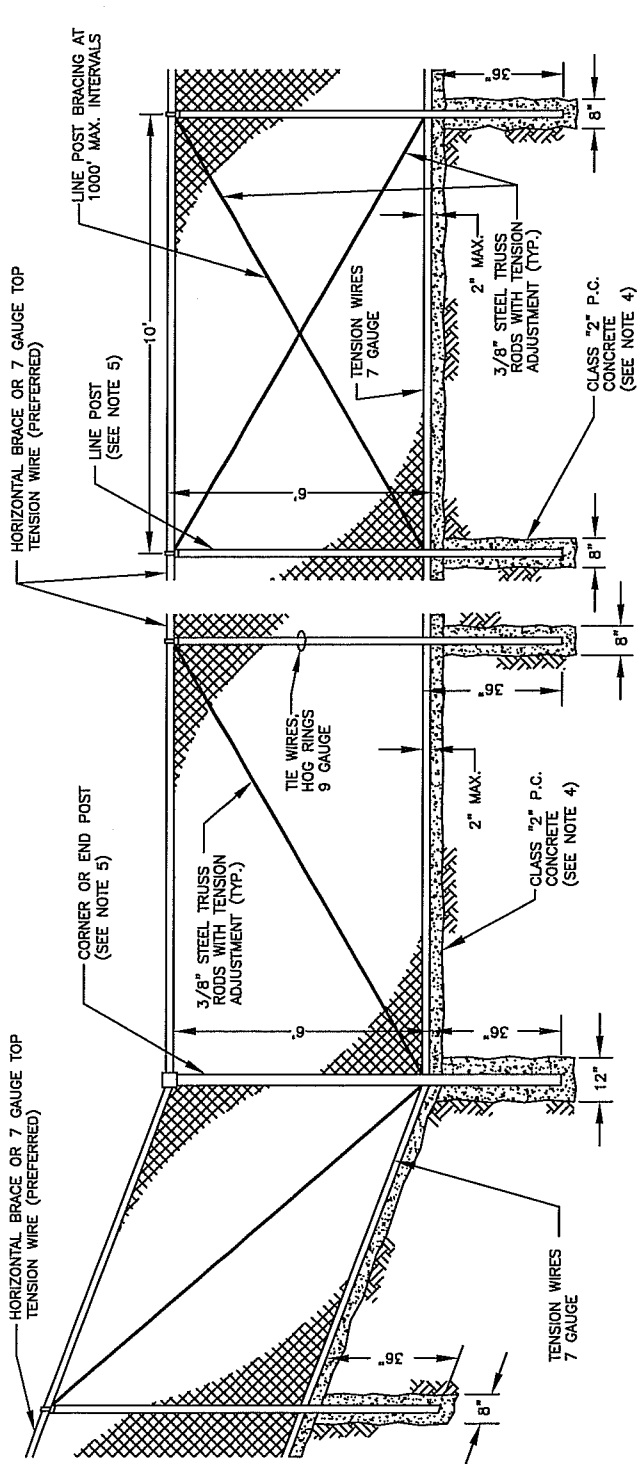
01-18-11

BGJ

BGJ

CM  
DRU  
PUD

*[Handwritten signatures]*



FOOTING & SIDEWALK

FOOTING & MOW STRIP

NOTES:

1. ALL METAL SHALL BE GALVANIZED.
2. FENCE FABRIC SHALL BE 9 GAUGE, 2" MESH.
3. FABRIC EDGES SHALL BE KNUCKLED.
4. ALL CONCRETE SHALL BE CLASS 2.
5. LINE POST: 2-3/8" O.D., 3.65 LBS.-FT. CORNER AND END POSTS: 2-7/8" O.D., 5.79 LBS./FT. BRACES: 1-5/8" O.D., 2.27 LBS./FT.



# CITY OF CLOVIS

## CHAIN LINK FENCE

DWG NO.

M-8

REF.: STD. SPECIFICATIONS SECTION 80, & STD. DRAWING M-5B

APPROVED BY:

CITY ENGINEER

DATE:

*[Handwritten signature]*  
1/29/11

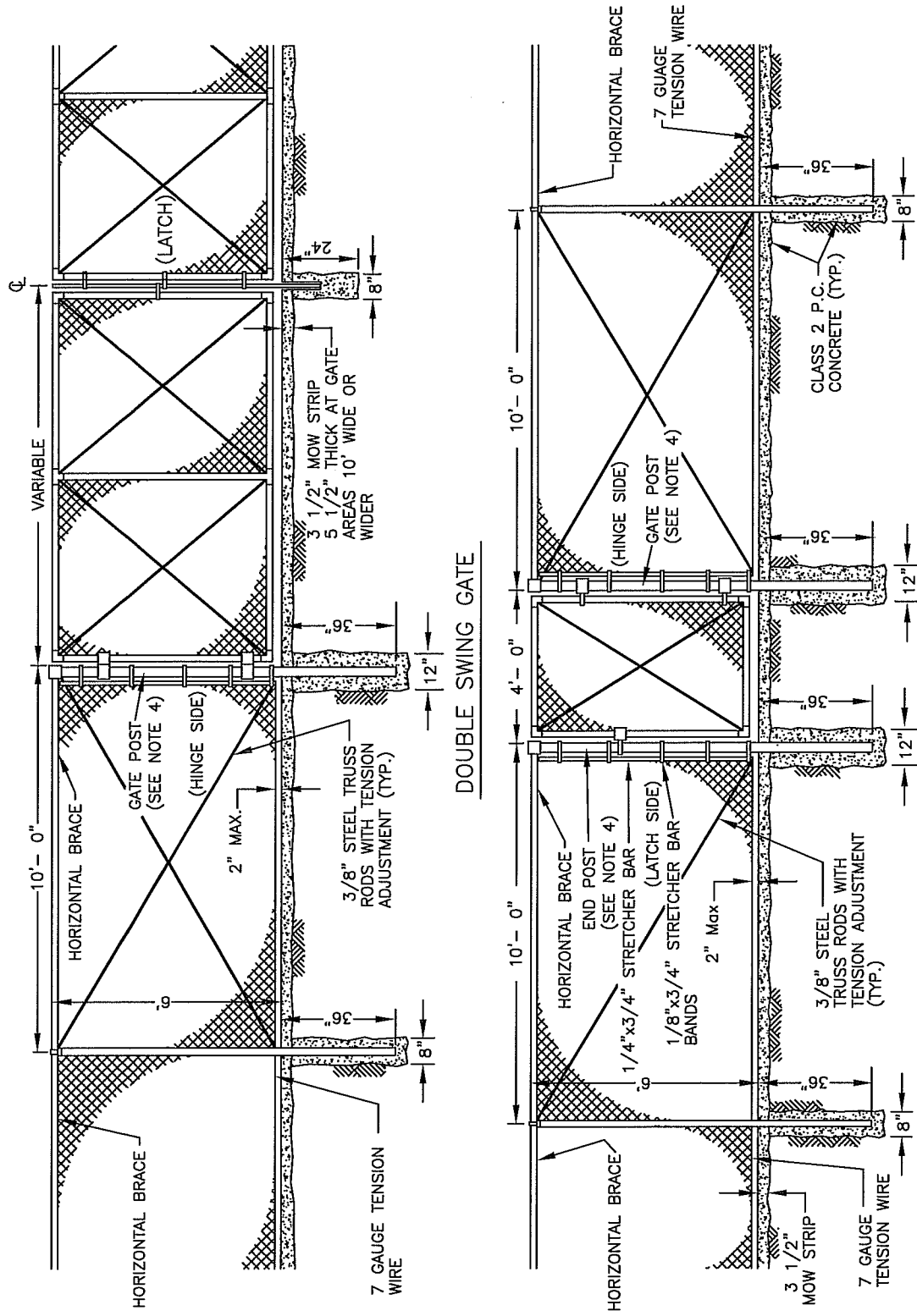
NO.	REVISED	BY	APPROVALS
	03-18-09	BGJ	CM
	01-18-11	BGJ	DRU PUD

SCALE: NTS

DRAWN BY: JA

SHEET 1 OF 1

DOUBLE SWING GATE  
SYMMETRICAL ABOUT  $\phi$



**NOTES:**

1. FOR MOW STRIP AND POST DETAILS, SEE STD. DWG. M-5A.
2. ALL METAL SHALL BE GALVANIZED.
3. GATE FABRIC SHALL BE 9 GAUGE, 2" MESH, KNUCKLED SWEDGES.
4. GATE POSTS: GATE WIDTH,  
6' OR LESS: 2-7/8" O.D., 5.79 LBS/FT.  
7' THRU 13': 4" O.D., 9.11 LBS/FT.  
14' THRU 18': 6-5/8" O.D., 18.97 LBS/FT.  
OVER 18': 8-5/8" O.D., 24.70 LBS/FT.
5. ALL CONCRETE SHALL BE CLASS 2.



# CITY OF CLOVIS

## CHAIN LINK FENCE GATE DETAILS

DWG NO.  
**M-9**

REF.: STD. SPECIFICATIONS  
SECTION 80, &  
STD. DRAWING M-5A

APPROVED BY:	NO.	REVISED	BY	APPROVALS
CITY ENGINEER DATE: 7/19/11		03-18-09	BGJ	CM DRU PUD
		01-18-11	BGJ	

SCALE: NTS  
DRAWN BY: JA  
SHEET 1 OF 1