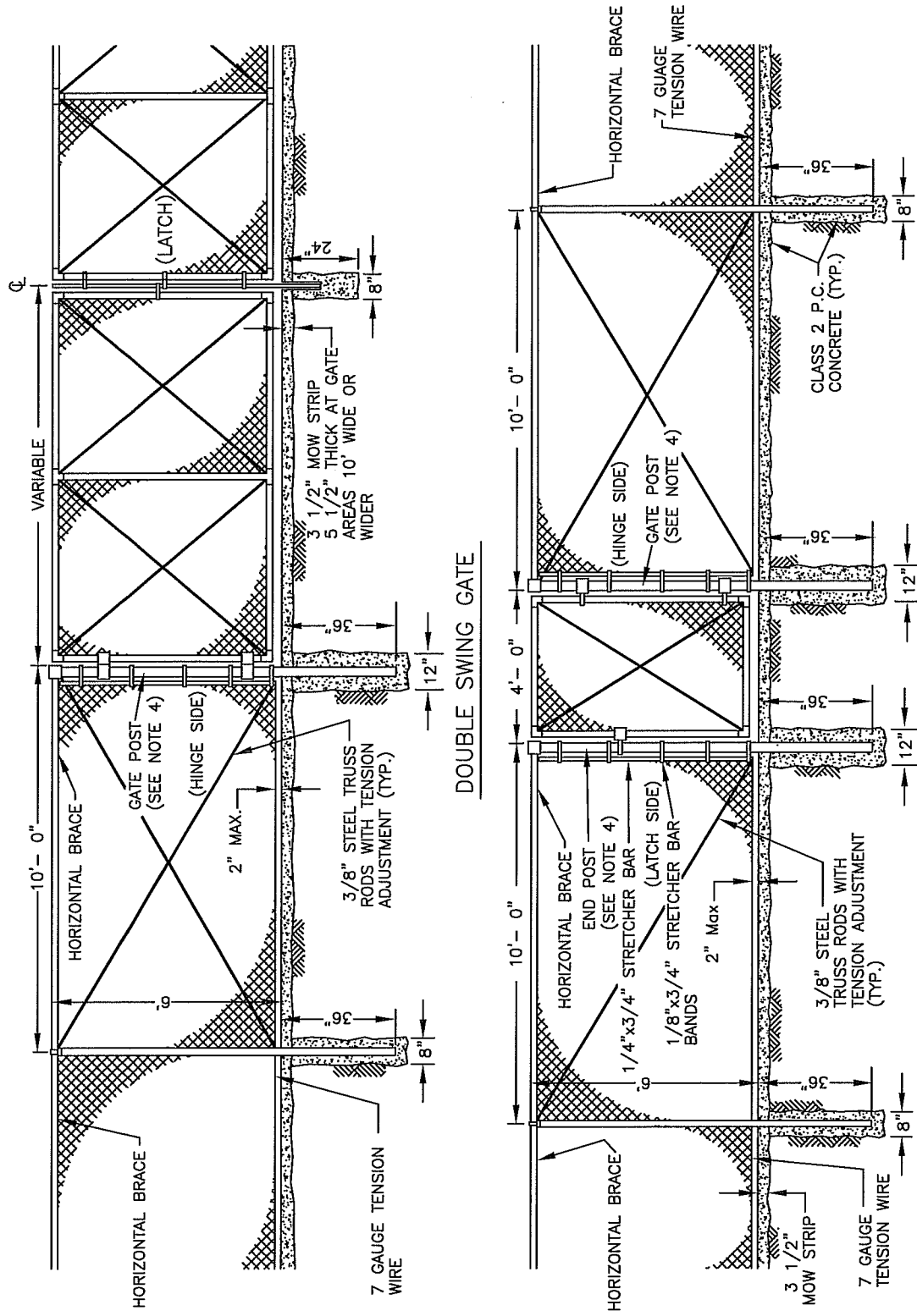


DOUBLE SWING GATE  
SYMMETRICAL ABOUT  $\phi$



**NOTES:**

1. FOR MOW STRIP AND POST DETAILS, SEE STD. DWG. M-5A.
2. ALL METAL SHALL BE GALVANIZED.
3. GATE FABRIC SHALL BE 9 GAUGE, 2" MESH, KNUCKLED SWEDGES.
4. GATE POSTS: GATE WIDTH,  
6' OR LESS: 2-7/8" O.D., 5.79 LBS/FT.  
7' THRU 13': 4" O.D., 9.11 LBS/FT.  
14' THRU 18': 6-5/8" O.D., 18.97 LBS/FT.  
OVER 18': 8-5/8" O.D., 24.70 LBS/FT.
5. ALL CONCRETE SHALL BE CLASS 2.



# CITY OF CLOVIS

## CHAIN LINK FENCE GATE DETAILS

DWG NO.  
**M-9**

REF.: STD. SPECIFICATIONS  
SECTION 80, &  
STD. DRAWING M-5A

APPROVED BY:	NO.	REVISED	BY	APPROVALS	SCALE: NTS
CITY ENGINEER DATE: 7/19/11		03-18-09	BGJ	CM DRU PUD	DRAWN BY: JA
		01-18-11	BGJ		

SHEET 1 OF 1