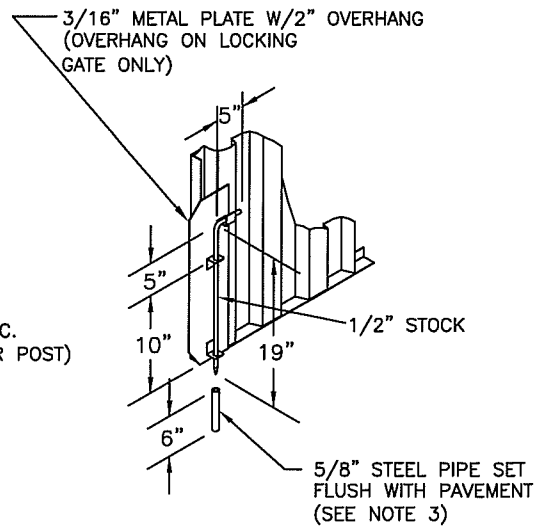
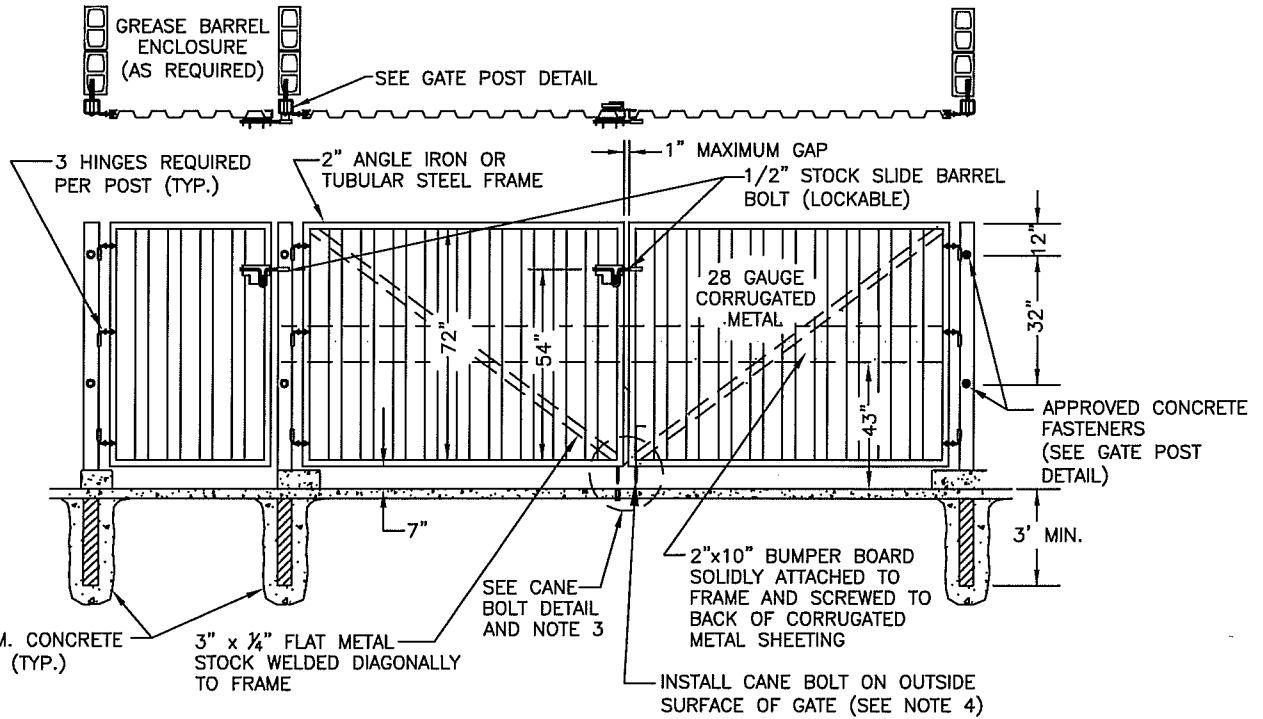


GATE POST DETAIL



CANE BOLT DETAIL

SEE NOTE 4 FOR LOCATIONS OF CANE BOLTS. (INSIDE OR OUTSIDE SURFACES OF GATES)



**NOTES:**

1. GATES TO BE PAINTED TO MATCH BUILDING ACCENT FEATURES.
2. DESIGN, ENGINEERING AND CONSTRUCTION NOT SPECIFICALLY NOTED SHALL BE IN ACCORDANCE WITH ACCEPTED INDUSTRY STANDARDS AND OF FIRST QUALITY.
3. SECONDARY CANE BOLT RETAINER TO BE PLACED FOR EACH GATE SUCH THAT GATE IS HELD IN A POSITION 90 DEGREES TO THE CLOSED POSITION.
4. INSTALL CANE BOLT ON OUTSIDE SURFACE OF NON-LOCKING GATE (GATE WITHOUT SLIDE BARREL BOLT).

	CITY OF CLOVIS				DWG NO. <b>M-3</b>
	TRASH ENCLOSURE GATE DETAILS				
APPROVED BY:	NO.	REVISED	BY	APPROVALS	SCALE: NTS
CITY ENGINEER DATE: 1/3/12				CM DRU <i>[Signature]</i> PUD <i>[Signature]</i>	DRAWN BY: JA SHEET 1 OF 1