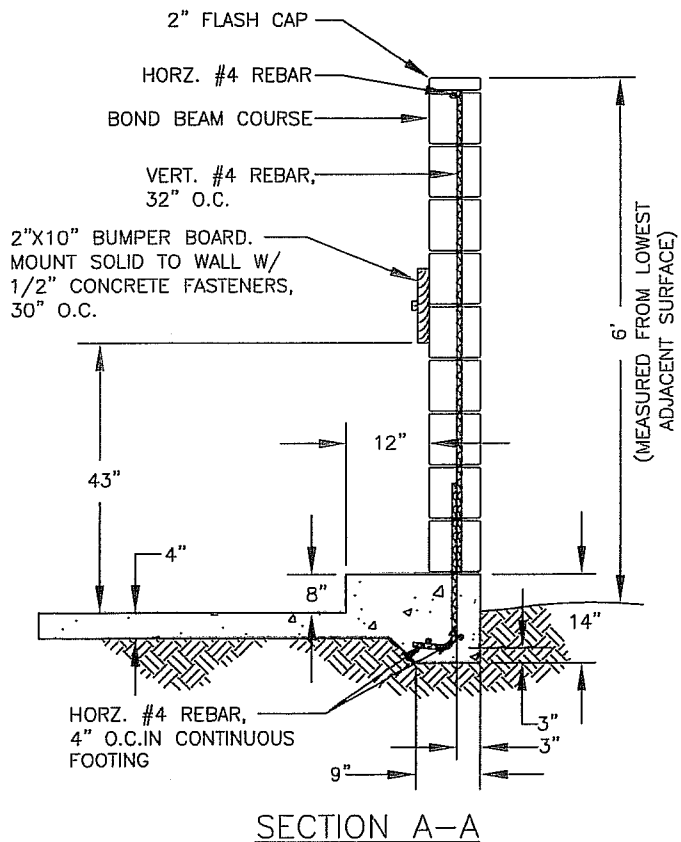


INSIDE-WALL ENCLOSURE DIMENSIONS		
	A	B
TYPE I	10'8"	10'4"
TYPE II	14'8"	10'4"
TYPE III	18'8"	10'4"
TYPE IV	14'8"	15'4"
TYPE V	18'8"	15'4"



**NOTES:**

1. ALL ENCLOSURES TO BE CONSTRUCTED USING 8"x8"x16" 2000 PSI CONCRETE BLOCK TO MATCH BUILDING FEATURES. CITY BUILDING PERMIT REQUIRED FOR ENCLOSURE.
2. ALL CELLS SHALL BE GROUTED SOLID W/ 2000 PSI @ 28 DAYS GROUT.
3. CONCRETE PAD FORMS SHALL BE INSPECTED BY THE CITY BUILDING DIVISION PRIOR TO POUR.
4. CONCRETE PAD SHALL BE CONSTRUCTED ON MIN. 6" OF UNDISTURBED SOIL, SAND BEDDING OR 90% C.N.S.
5. GREASE BARREL ENCLOSURES ARE REQUIRED FOR ALL RESTAURANTS AND FOOD SERVICE ESTABLISHMENTS.
6. SEE STD. DWG. M-3B FOR GATE DETAILS.
7. ACCESS TO ENCLOSURE SHALL BE PAVED AND CLEAR OF SPEED BUMPS OR OTHER OBSTRUCTIONS.
8. FOOTINGS AND FLOOR SHALL BE CONCRETE, 2500 PSI @ 28 DAYS, INCLUDING GATE POST FOOTINGS.



# CITY OF CLOVIS

## TRASH BIN ENCLOSURE

DWG NO. **M-2**

REF. STD. SPECIFICATIONS

APPROVED BY:  
CITY ENGINEER  
DATE: *2/1/12*

NO.	REVISED	BY	APPROVALS
	12-29-11	BGJ	CM
	1-18-12	BGJ	DRU PUD

SCALE: NTS  
DRAWN BY: JA  
SHEET 1 OF 1